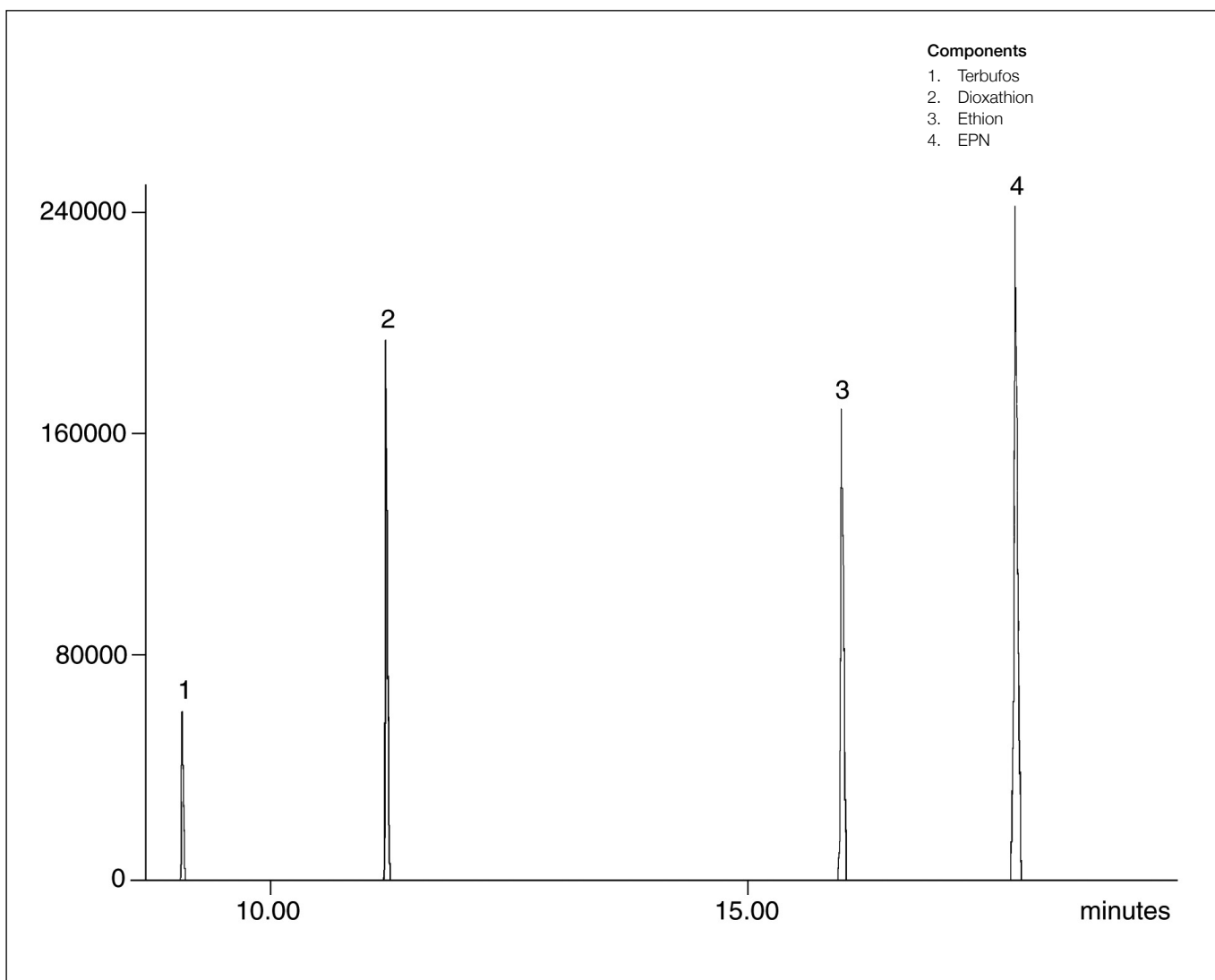


## Analysis of organophosphorous pesticides (USEPA 614.1)

**BPX5**

<b>Column part number</b>	<b>054142</b>		
Phase	BPX5	Detector	MS
Column	30 m x 0.22 mm x 0.25 $\mu$ m	Injection mode	Splitless, 0.5 min
Initial temperature	50°C, 1 min	Carrier gas	He, 30 cm/sec
Rate 1	30°C/min to 150°C	Injection volume	1 $\mu$ L
Rate 2	10°C/min to 300°C	Interface/source/quad	320°C, 250°C, 150°C
Final temperature	300°C		



For more information visit [www.trajanscimed.com](http://www.trajanscimed.com) or contact [techsupport@trajanscimed.com](mailto:techsupport@trajanscimed.com)