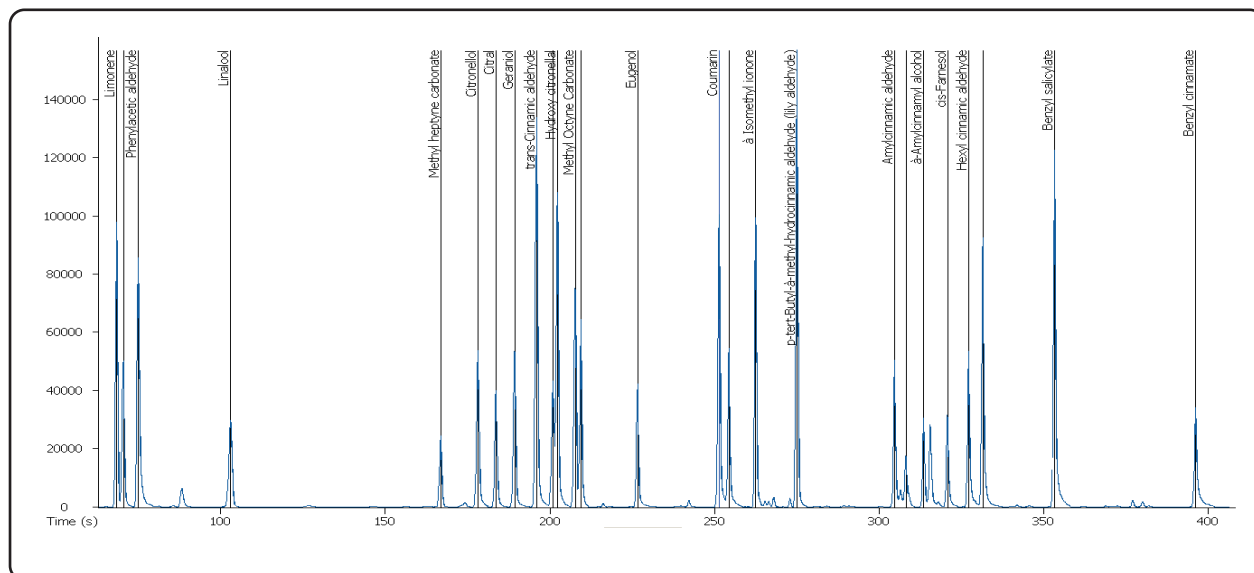


Analysis of Allergens Common to Fragrance Samples GC-TOFMS

Life Science and Chemical Analysis Centre
LECO Corporation, Saint Joseph, Michigan USA



GC-TOFMS was used to detect common allergens in essential oil samples. This is a strength of the TOFMS detector due to the necessity for high acquisition rates to successfully deconvolute these analytes from the complex matrix typical of fragrance samples.

Column:

10 m x 0.18 mm x 0.18 μ m Rtx-5ms

TOFMS:

40 to 500 m/z @ 20 spectra/s

For questions on this analysis e-mail us at:
life_science@leco.com

For a complete listing of snapshots and application notes visit us on the web at www.leco.com

