

SIMPLIFY YOUR STARTUP FOR UNTARGETED MYCOTOXINS SCREENING

AGILENT LC/MS Personal Compound Database and Library (PCDL)

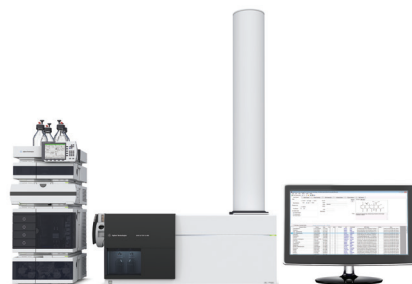
Screen samples quickly and easily using the Mycotoxins and Related Metabolites PCDL

Conventional multi-target mycotoxin screening methods are based on triple quadrupole technology. However, these methods are limited to target compounds, and do not allow a retrospective analysis.

Combining sensitive, high-performance TOF and Q-TOF instruments with the Mycotoxins and Related Metabolites PCDL overcomes this limitation. Powerful data acquisition and analysis software tools like the All Ions MS/MS workflow enable even high-volume labs to perform truly comprehensive screening for large numbers of both target and non-target compounds.

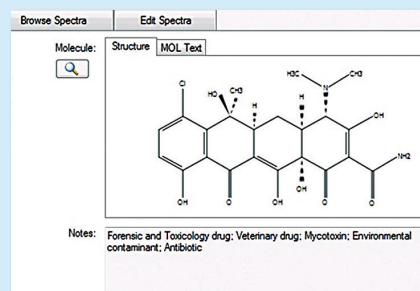
Capture all the data, all the time

Using TOF and Q-TOF technology with All Ions MS/MS acquisition allows you to retain all spectral data, not just your original range of interest, so you can refer back to your data anytime – without reruns – to investigate samples further.



The Mycotoxins PCDL includes:

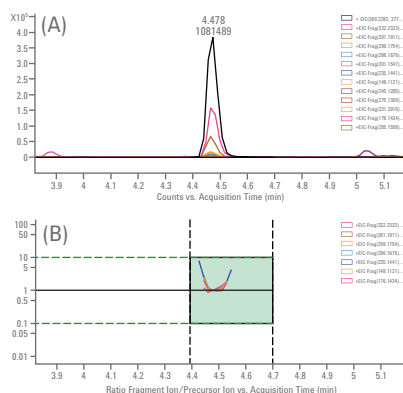
- Agilent Mycotoxins and Related Metabolites Personal Compound Database and Library (PCDL) with 450 compounds and Accurate Mass MS/MS spectra for more than 300 compounds
- Quick-start guide and Application Note to create high quality screening methods



Agilent Technologies

Method Guidance helps you start screening for mycotoxins in a fraction of the time

The standalone Mycotoxin and Related Metabolites PCDL comes with a quick start guide and application notes to help you develop your method.



Overlay of precursor and fragment ion traces for aspergillimide in a spiked maize sample (A), coelution plot (B) and compound identification results including the co-elution score.

Agilent's Mycotoxins PCDL ensures fast, customized method development.

Ordering Information:

Mycotoxin PCDL, standalone (G5883CA)

The following are required but not included with the Mycotoxin PCDL, standalone (G5883CA):

- Agilent 6200 Series TOF or 6500 Series Q-TOF LC/MS systems
- Agilent MassHunter Acquisition Software B.05 or higher and Windows 7 64-Bit
- Agilent MassHunter Qualitative Analysis Software B.07 or higher
- Agilent MassHunter Quantitative Analysis Software B.07 or higher

Agilent is committed to helping you get the answers you need, faster and easier



A new benchmark in efficiency, the 1290 Infinity II achieves unmatched separation and detection performance, delivering data of the highest quality for ultimate confidence.

Agilent's Jet Stream Electrospray Ion Source lowers detection levels of mycotoxins in complex matrices.



Best-in-class MS and MS/MS mass accuracy: The Agilent 6550 Q-TOF, with iFunnel technology, provides highest sensitivity. The Agilent 6545 Q-TOF is easily optimized for

small molecule analyses such as mycotoxins, by leveraging the new Swarm Autotune to help every user get up to 5x sensitivity improvements over previous generation instruments.



Find out about all of Agilent PCDLs
Call **800-227-9770** (in the US or Canada) or visit
www.agilent.com/chem/mycotoxins

This information is subject to change without notice
© Agilent Technologies, Inc. 2017
Printed in U.S.A. July 31, 2017
5991-5691EN



Agilent Technologies