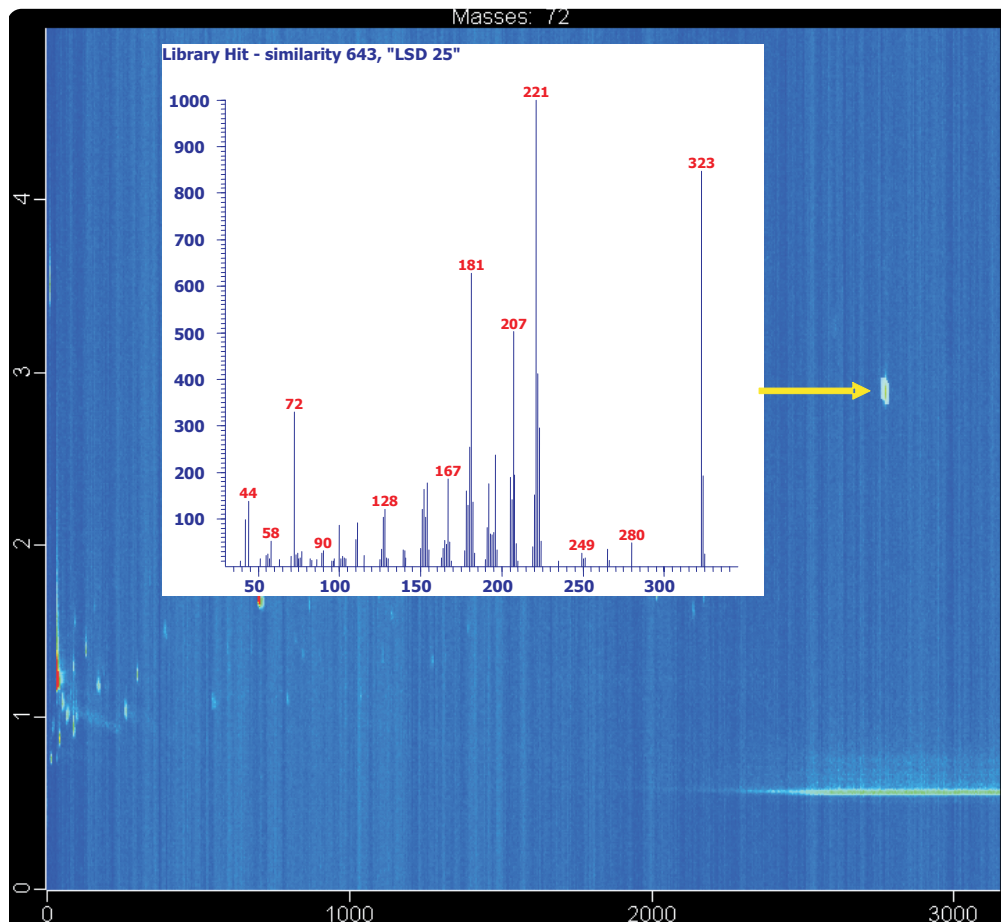


SPME-GCxGC-TOFMS Analysis of Non-Derivatized Drugs of Abuse in Urine for LSD

Life Science and Chemical Analysis Centre
LECO Corporation, Saint Joseph, Michigan USA



Solid phase microextraction of drugs in urine by GCxGC-TOFMS analysis without sample derivitization showing identification of LSD-25 by a 1 μ L, 10:1 split injection at 63 pg/ μ L with a similarity of 643 out of 999.

Columns:

30 m x 0.25 mm x 0.25 μ m Rxi-5ms
1.5 m x 0.18 mm x 0.20 μ m Rtx-200

TOFMS:

40 to 650 m/z @ 200 spectra/s

For questions on this analysis
e-mail us at: life_science@leco.com

For a complete listing of snapshots
and application notes visit us on the
web at www.leco.com

