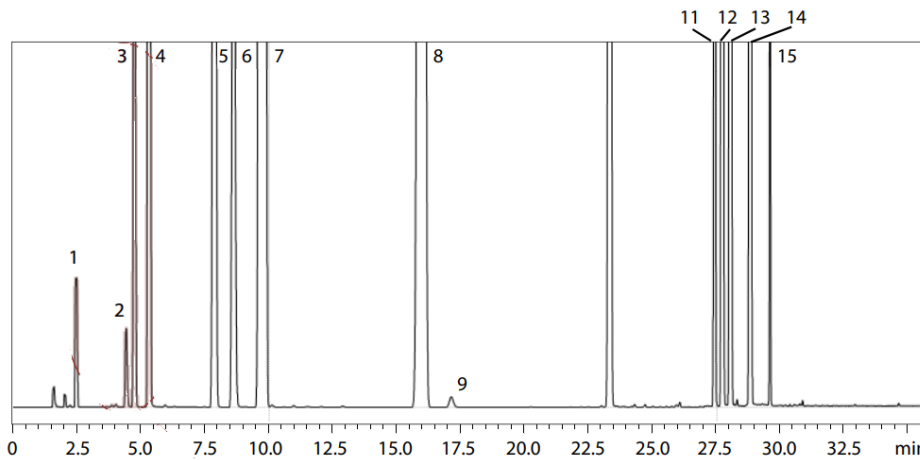


SH-I-624Sil MS

Analysis of Residual Solvents in drug products

Keywords: USP <467>, Residual Solvents, Procedure A



Class 2A

1. Methanol
2. Acetonitrile
3. Methylene chloride (DCM)
4. trans-1,2-Dichloroethylene
5. cis-1,2- Dichloroethylene
6. Tetrahydrofuran
7. Cyclohexane
8. Methylcyclohexane
9. 1,4-Dioxane
10. Toluene
11. Chlorobenzene
12. Ethylbenzene
13. m,p-Xylene
14. o-Xylene
15. Cumene

GC Method for USP 467 Procedure A

Model	: Nexis™ GC-2030
Detector	: FID-2030
Headspace Sampler	: HS-20
Column	: SH-I-624Sil MS (30 m x 0.32 mm I.D. df = 1.8 μm), P/N: 227-36077-01
Column Temperature	: 40 °C(20 min) – 10 °C/min - 240 °C (20 min) Total 60 min
Injection Mode	: Split 1:5
Carrier Gas Controller	: Constant Linear Velocity (He)
Linear Velocity	: 35 cm/sec
Detector Temperature	: 250 °C
Injection Volume	: 1 mL

HS-20 Method for USP 467 Procedure A

Oven Temperature	: 80 °C
Sample Line Temperature	: 110 °C
Transfer Line Temperature	: 120 °C
Vial Stirring	: OFF
Vial Volume	: 20 mL
Vial Heat-retention Time	: 60 min
Vial Pressurization Time	: 1 min
Vial Pressure	: 75 kPa
Loading Time	: 1 min
Needle Flush Time	: 5 min

Source : Application News G290 ([JP](#), [ENG](#))

CoreFocus and Nexis are trademarks of Shimadzu Corporation or its affiliated companies in Japan and/or other countries.

Shimadzu Corporation
www.shimadzu.com/an/

For Research Use Only. Not for use in diagnostic procedures.

This publication may contain references to products that are not available in your country. Please contact us to check the availability of these products in your country.

The content of this publication shall not be reproduced, altered or sold for any commercial purpose without the written approval of Shimadzu.

Company names, products/service names and logos used in this publication are trademarks and trade names of Shimadzu Corporation, its subsidiaries or its affiliates, whether or not they are used with trademark symbol "TM" or "®". Third-party trademarks and trade names may be used in this publication to refer to either the entities or their products/services, whether or not they are used with trademark symbol "TM" or "®". Shimadzu disclaims any proprietary interest in trademarks and trade names other than its own.

The information contained herein is provided to you "as is" without warranty of any kind including without limitation warranties as to its accuracy or completeness. Shimadzu does not assume any responsibility or liability for any damage, whether direct or indirect, relating to the use of this publication. This publication is based upon the information available to Shimadzu on or before the date of publication, and subject to change without notice.