



Agilent Environmental Solutions

Tools and techniques for safeguarding our planet and its people

As the environmental industry's premier measurement company, Agilent is uniquely positioned to help you comply with increasingly strict global regulations – while meeting your demands for speed, accuracy, and productivity. This poster highlights our diverse portfolio of products for analyzing organic and inorganic contaminants in water, soil, air, and food.

PREPARE

Reliable and accurate results with fewer repeated samples



Only Agilent offers a complete line of sample preparation products for any type of analysis, filtration, purification, and SPE across the full spectrum of instrumentation – GC, LC GC/MS & LC/MS.

Agilent Bond Elut SPE products selectively remove interferences and/or analytes from complex matrices and provide the largest choice of sorbent formats in the market. Over 40 phase functionalities in more than 30 formats are available including our industry leading QuEChERS Kits.

Inject new performance into your gas chromatography



Agilent's 7693A Automatic Liquid Sampler takes advantage of today's latest technology to deliver greater reliability, performance, and flexibility.

- Dual simultaneous injection and patented fast injection modes ensure minimal needle discrimination and sample decomposition
- Basic sample preparation capabilities (such as dilution, internal standard addition, and heating) eliminate analyst-to-analyst variability and reduce rework

Consistent volatiles analyses using automated headspace sampling technology

The **Agilent 7697A Headspace Sampler** is packed with the latest productivity-boosting features, including:

- An isolated carrier path that lets you vent vials safely while your sample is running
- Automatic calibration, alignment, and vial leak checking
- Fast, easy conversion of Agilent and non-Agilent methods



Versatile, sensitive, and highly automated sample introduction from a variety of environmental matrices

The **Markes Thermal Desorption (TD)** system allows the introduction of volatile and semi-volatile compounds from a wide range of sample matrices, directly into a GC or GC/MS. Markes Series 2 TD platform consists of the UNITY 2, Ultra 2, Air Server 2, and CIA8 products allowing analysis of single tubes, real-time air samples, and canisters with options for automated analysis.

Minimize contamination



Agilent GC/MS and LC/MS supplies are engineered by our experienced instrument design teams, manufactured to demanding specifications, and tested under the strictest conditions.

- **Agilent certified vials** work flawlessly with your autosampler's gripping and injection mechanisms, eliminating breakage and leaks that can cause unnecessary downtime
- **Autosampler syringes** enhance the performance of Agilent autosamplers while optimizing the reliability, precision, and accuracy of sample introduction
- **Deactivated MS-certified split and splitless liners** are tested with FID and MSD to ensure inertness, purity, and consistency

ANALYZE

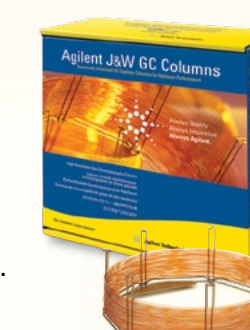
GC/MS: High sensitivity and selectivity for dirty samples and demanding environments



The **Agilent 7000 Series Triple Quadrupole GC/MS** combines industry-leading reliability with femtogram-level sensitivity in complex matrices.

Industry-leading columns for emerging GC and GC/MS methods

Agilent J&W GC columns give you the lowest bleed levels; the best inertness for acids, bases, and mixed functional compounds; and the tightest column-to-column reproducibility – essential for complex environmental applications.



LC/MS: Confident analysis of emerging contaminants and unknown compounds in complex matrices



Whether you need a "workhorse" LC system for routine analysis or a sophisticated, high-resolution LC/MS instrument, **Agilent LC systems** deliver ultimate resolution and sensitivity, while helping you boost your separation power per time. They also ensure easy method transferability between systems, without redevelopment or revalidation.

Make every HPLC and UHPLC in your lab work harder

Poroshell 120 LC columns

- Sub-2 µm-like speed and resolution, without backpressure
- 2 µm frit resists plugging with dirty samples
- Improved speed, resolution, and sensitivity in complex samples



Atomic Spectroscopy (AA, ICP-OES, ICP-MS): Fast and accurate results that satisfy global environmental standards



The **700 Series ICP-OES** offers radial or axial plasma viewing, and simultaneous wavelength measurement using a single view for extended dynamic range and reduced interference.



The **7700 ICP-MS** delivers nearly universal elemental coverage, low detection limits and the widest dynamic range in high-matrix samples delivering the highest accuracy and productivity in the analysis of trace elements in foods and natural products.



Ready-to-use GC/MS and LC/MS solutions for multi-residue pesticide screening

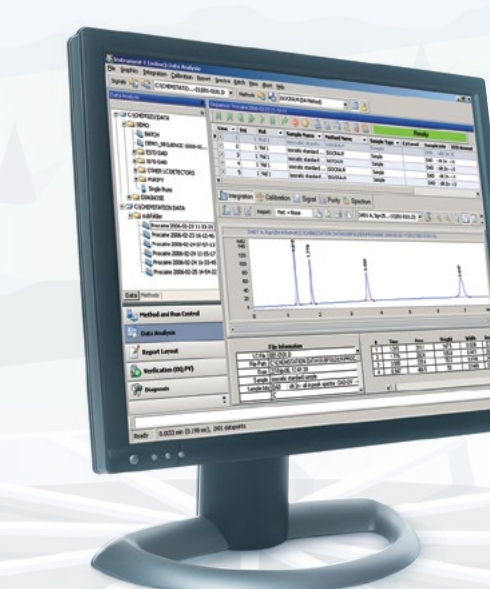
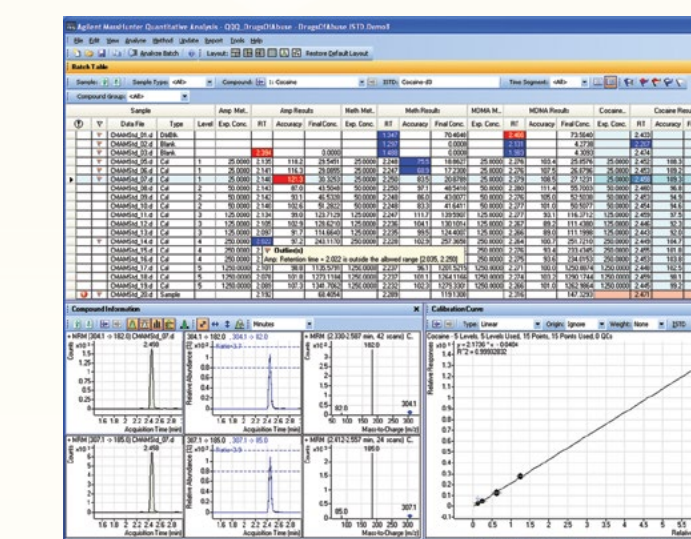
- Triple Quadrupole GC/MS Pesticide Analyzers
- Triple Quadrupole LC/MS Pesticide Application Kit

REPORT

Simplify your MS operation, from tuning to final report

Agilent MassHunter – the world's best MS software – provides a single platform for GC/MS, LC/MS, and ICP-MS systems. It features:

- A consistent software platform that reduces your staff training time
- Fast, easy setup and operation with automated tuning for triple quadrupole and Q-TOF instruments
- The ability to import worklists from spreadsheets, reducing method development and high-throughput screening time
- Specialized modules for instrument control and data acquisition, qualitative identification of unknowns, and quantitation of target compounds
- Flexible data reporting with preconfigured and customized formats



Proven software packages for all your chromatography needs

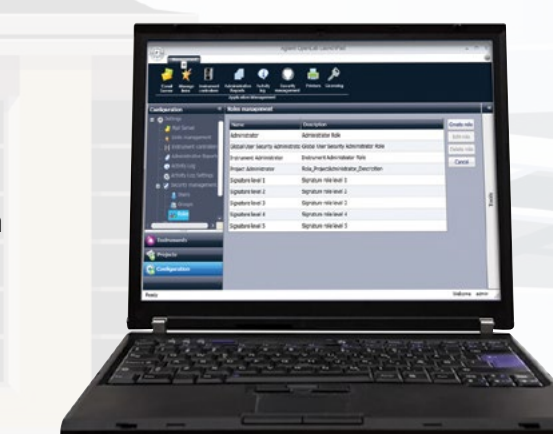
Agilent ChemStation is a scalable data system ideal for applications ranging from early product development to quality assurance. Sophisticated level-5 control and monitoring of LAN-based instruments ensures fast, flexible data acquisition, complemented by advanced data analysis and reporting capabilities for highest productivity. Other features include:

- Control of Agilent LC, GC, CE, GC/MS and LC/MS instruments, generic A/D converters, and third-party LC detectors
- Easy-to-use data review for fast results generation and sample-centric reporting
- Add-on software modules that support specific R&D workflow solutions
- Seamless integration into non-regulated or highly-regulated workflows
- Easy customization through a built-in macro language

Unlock your lab's full potential

Agilent's OpenLAB is a rich, integrated suite of software products built on customer-driven architecture. It delivers superior performance, open systems integration, and investment protection that supports each step in your data's lifecycle – from collection and analysis to interpretation and management.

In addition, OpenLAB supports open systems by adhering to published standards that enable interoperability and data exchange – both within the OpenLAB suite and with third party software.



To learn more about Agilent environmental solutions, software, and applications, visit www.agilent.com/chem/environmental