

# FTIR Spectrometer

Lyza 7000



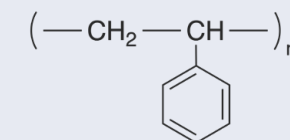
# Lyza 7000: One Instrument. A World of Samples.

Your world just got bigger: Measure hundreds of sample types with one compact instrument – Lyza 7000. Solid, liquid, gaseous, Lyza 7000 measures them all. It's the most reliable, user-friendly FTIR spectrometer on the market, way beyond industry standards.

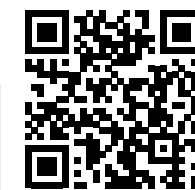
The software, combining measurement, processing, and spectral analyses in automated methods with customizable measurement reports, feels like it was made just for you.

It may be just one instrument, but it opens up a world of samples.

- ✓ Easy as 1-2-3: Fast pass/fail spectral analysis helps optimize quality, maximize efficiency
- ✓ Conduct complex measurement routines with ease
- ✓ Check incoming goods, identify unknown substances, ensure the quality of your final product
- ✓ Data management software AP Connect brings your lab data together, boosting productivity



FIND OUT MORE



[www.anton-paar.com/  
apb-lyza-7000](http://www.anton-paar.com/apb-lyza-7000)



# Press “Start”, and “Methods” Take Care of the Rest

Perform complex measurements at the push of a button. Control the innovative operating system directly on the instrument – no PC needed. Combine multiple analyses in a single method with a customizable report.

Anton Paar has designed high-quality analytical measuring solutions for decades. Our experience combined with our in-depth knowledge of FTIR spectroscopy gives you easy access to powerful analysis. Just press “Start”, and “Methods” will take care of the rest.

# Powerful Automated Analysis **Easy as 1-2-3**



## 1. Choose Method

→ Predefine your measurement settings and all spectral analyses once. Save them as “Method.” Use them again and again.



## 2. Press Start

→ Start all your analyses with a single tap.



## 3. Result

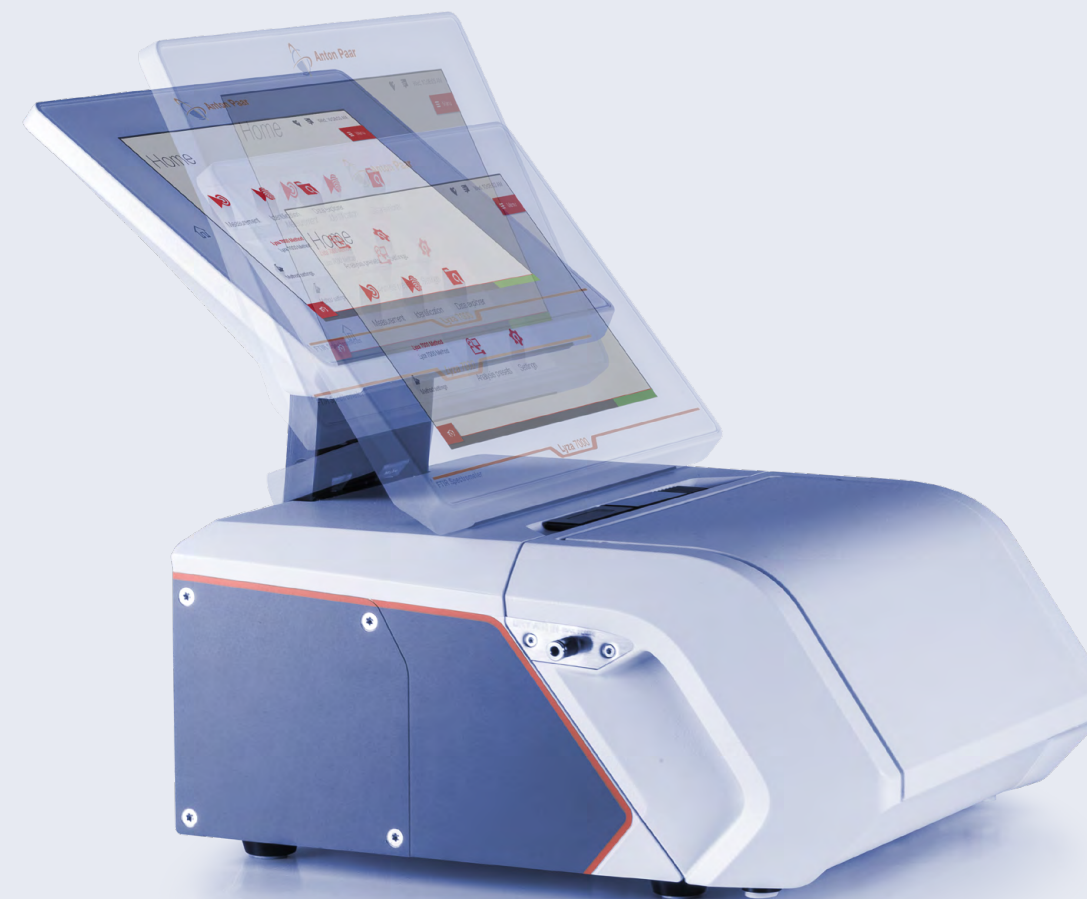
→ Enjoy the convenience of automatic spectral analysis. Receive a summary of all results in a single report.





# Lyza 7000: Remarkably Powerful

Lyza 7000 is a compact instrument with powerful embedded software that works right out of the box. Equipped with an adjustable touchscreen and a smart phone-inspired user interface, it delivers the most intuitive FTIR analysis experience on the market.



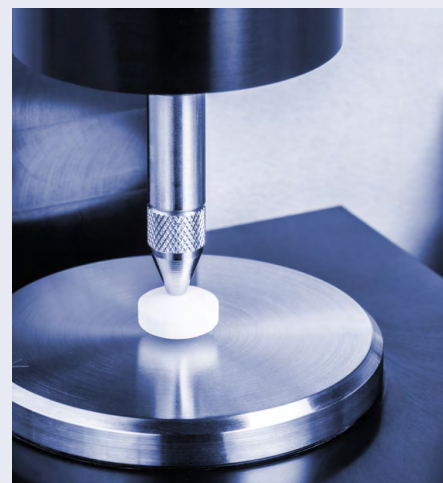
## Reliable

Innovative internal system monitoring technology constantly monitors your instrument. All you need to know, you know at a glance. The smart status LED light updates you on measuring progress wherever you are in the lab.



## Modular

The instrument's easily exchangeable cell module is compatible with a variety of ATR and transmission cells, enabling you to handle hundreds of sample types. Quickly swap your module and let the instrument detect it automatically.



## Versatile

Identify and verify any sample or unknown substance via your own specialized library, or choose from a variety of industry-standard libraries like S.T.Japan, Aldrich, and IChem.



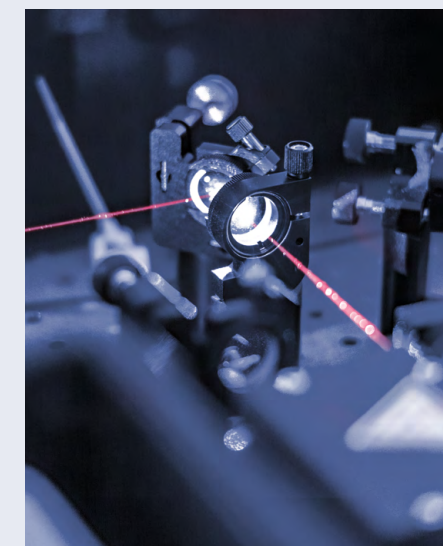
## Tailored

Lyza 7000 isn't just an instrument: It's a solution to all your QC challenges, fully equippable with a range of accessories, first-class software, and spectral libraries.



## Cost-efficient

Benefit from a touchscreen and small footprint to save bench space in your lab. The innovative "Eco Mode" not only helps you save energy but also ensures the longevity of core components in your system like the IR source.



## Refined

When we blended optical analysis expertise with the dream of unsurpassed quality control, a remarkable instrument was born.



# The Heart of **Lyza 7000**

The hermetically sealed, desiccated spectrometer core contains all the premium optical components needed to ensure the most stable conditions for precise measurements.

An exchangeable cell module houses a range of measurement cells, including horizontal ATR, transmission cells for liquid samples, and single-bounce ATR cells.

- ✓ Automatic calibration for optimal performance with every cell
- ✓ Permanently aligned cube-corner interferometer to compensate vibrations
- ✓ Ceramic composite IR source to ensure fast warm-up, stability, and durability
- ✓ High-performance molecular sieve drying cartridge that can be easily exchanged to keep your core components safe and dry at all times





	<b>Lyza 7000</b>
	↓
Detector	Pyroelectric DLaTGS detector
Optics	Hermetically sealed aluminum casing with gold-coated mirrors, KBr windows and beamsplitter
Signal-to-noise ratio	55,000:1 (1 min, 8 cm <sup>-1</sup> , 1,900 cm <sup>-1</sup> to 2,250 cm <sup>-1</sup> )
Spectral range	350 cm <sup>-1</sup> to 7,500 cm <sup>-1</sup>
Spectral resolution	1.4 cm <sup>-1</sup> to 16 cm <sup>-1</sup>
Wavenumber accuracy	<0.05 cm <sup>-1</sup> @ 900 cm <sup>-1</sup> to 3,000 cm <sup>-1</sup>
Measurement time	<30 seconds
Laser type	Single mode vertical-cavity surface-emitting laser (VCSEL)
Laser class	Class 1, enclosed hermetically
IR source	SiC composite
Interferometer	Permanently aligned cube-corner interferometer
Desiccant	Molecular sieve with color indicator, user-replaceable
Operating temperature range	10 °C to 30 °C (non-condensing)
Instrument dimensions	365 mm x 315 mm x 382 mm (D x W x H)
Cell compartment width	152 mm
Weight	12.8 kg
Power supply	DC 24V, 40 W
Communication interfaces	4 x USB 2.0 / CAN / Ethernet / Wi-Fi*
Data export formats	.csv, .pdf, .spc
Data management	AP Connect
Display	10.1", PCAP-Touchscreen, multi-touch
Controls	Touchscreen, optional keyboard, mouse, and barcode reader
Internal storage	32 GB
Spectral libraries	Factory library, user-built, third-party options
Security	User roles with customizable permissions, user password logins
Regulatory compliance	21 CFR Part 11 including installation, operation qualification and performance qualification (IQ/OQ/PQ)**

\*via external Wi-Fi stick  
\*\*only available in combination with Anton Paar Spectroscopy Suite

# Reliable. Compliant. Qualified.

Our well-trained and certified technicians are ready to keep your instrument running smoothly.



Maximum uptime



Warranty program

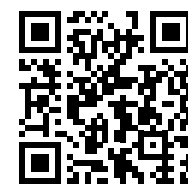


Short response times



A global service network

FIND OUT MORE



www.anton-paar.com/  
service

# Data at Your Fingertips

AP Connect streamlines instrument data workflows in laboratories by providing seamless, efficient data management and integration for instruments. This ensures accuracy, data safety, compliance, and paperless efficiency in a centralized digital hub, which in turn helps improve data quality and reduces overhead costs.

FIND OUT MORE



www.anton-paar.com/  
apt-apconnect



