



DISTRIBUTOR TRAINING

Installation & Configuration

P010/80F 10/2022



Content

- Licensing & Software Protection
- Installation
- Registration
- Configuration

Software protection by HW key

- One HW key required for each station (PC)
- One Clarity station per PC
- Non-driver USB HW key is standard (other types on request)





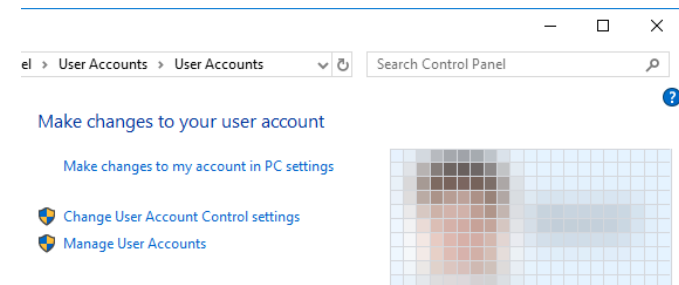
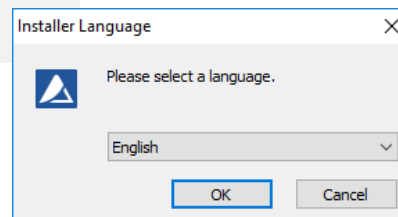
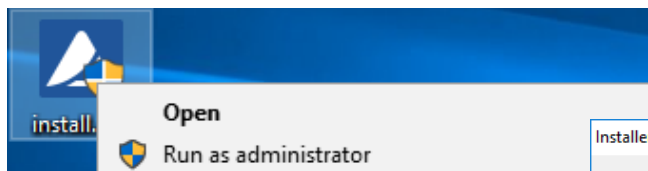
Software protection by HW key

- User code (alphanumeric code) combined with the appropriate HW key (S/N yyyyyyy) is required to operate Clarity (S/N xx-yyyyyy)
- TRIAL option is available (HW key required) for potential customers' in-house testing
- Clarity rejects to start without HW key plugged in
- Possibility to install Clarity DEMO which does not require HW key
- Important: **Loss of the HW key is equal to a loss of the license!**



Installation

- Obtain Clarity installer *install.exe* from USB medium of download it from DataApex webpage (not applicable to OEM versions)
- Select Run as an Administrator (under intended Windows User Account)
 - Sometimes might be necessary modify UAC
- Select language for installation procedure and follow the guidance of installer





INSTALLATION & CONFIGURATION → INSTALLATION

Clarity 8.3.0.105-Preliminary Setup

License Agreement

Please review the license terms before installing Clarity.

Press Page Down to see the rest of the agreement.

End User License Agreement for Clarity Chromatography Software

IMPORTANT, READ CAREFULLY

This DataApex End-User License Agreement (EULA) is a legal agreement between you (either an individual or a single entity) and DataApex for the DataApex software product identified above, which includes computer software and associated media and printed materials, and may include on-line or electronic documentation (SOFTWARE PRODUCT or SOFTWARE). By installing, copying, or otherwise using the SOFTWARE PRODUCT, you agree to be bound by the terms of this EULA. If you do not agree to the terms of this EULA, promptly return the unused SOFTWARE PRODUCT to the supplier from who you obtained it for a full refund.

If you accept the terms of the agreement, click I Agree to continue. You must accept the agreement to install Clarity.

DataApex Installer

Clarity 8.3.0.105-Preliminary Setup

Previous Version

A previous version has been found

Existing installation(s) of Clarity found:

- Update existing installation (recommended).
Uninstall will be performed first.
- Install to different location.

Clarity v.8.2.2.94

Clarity v.8.3.0.105-Preliminary

Your data and configuration will be preserved in both cases.

DataApex Installer

Clarity Uninstall

Uninstall Clarity

Remove Clarity from your computer.

Clarity will be uninstalled from the following folder. Click Next to continue.

Uninstalling from:

DataApex Installer

Clarity 8.3.0.105-Preliminary Setup

Upgrade

Upgrade the previous version of Clarity

Destination folder contains data and configuration files.

- Keep the configuration and important data files
- Overwrite all files without asking
- Ask before overwriting any important file

DataApex Installer

Clarity 8.3.0.105-Preliminary Setup

Choose Components

Choose which features of Clarity you want to install.

Check the components you want to install and uncheck the components you don't want to install. Click Next to continue.

Select the type of install:

Or, select the optional components you wish to install:

- Program Files
- Help
- Documentation
- DEMO projects
- LC Control
- GC Control

Description
Position your mouse over a component to see its description.

Space required: 1.5 GB

DataApex Installer

Clarity 8.3.0.105-Preliminary Setup

Choose Start Menu Folder

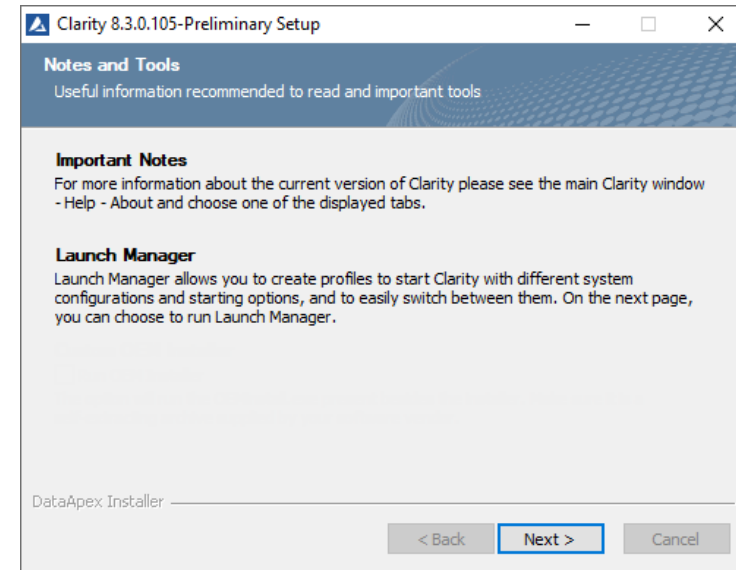
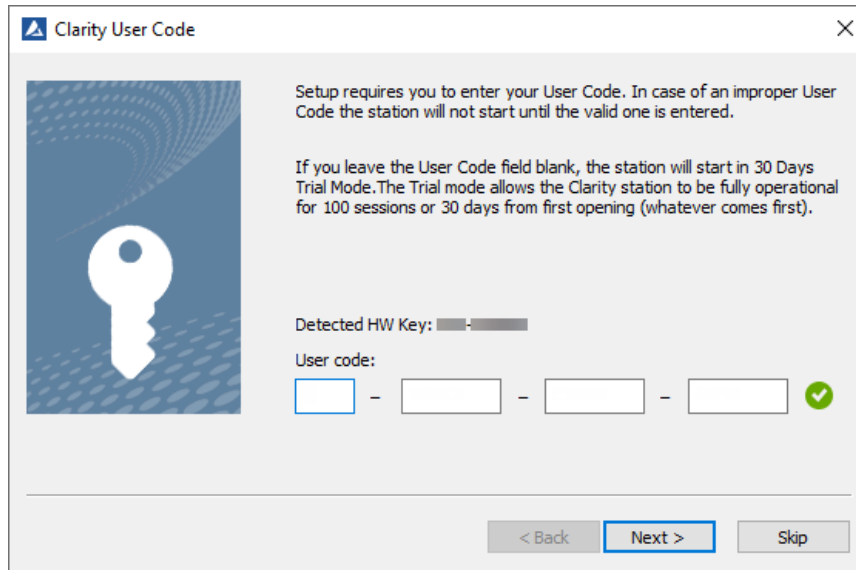
Choose a Start Menu folder for the Clarity shortcuts.

Select the Start Menu folder in which you would like to create the program's shortcuts. You can also enter a name to create a new folder.

- 7-Zip
- Accessibility
- Accessories
- Administrative Tools
- Agilent Lab Advisor
- Ashampoo
- Blueberry Software
- Bonjour
- calibre 64bit - E-book Management
- Cisco
- Cisco Webex Meetings Desktop App

Do not create shortcuts

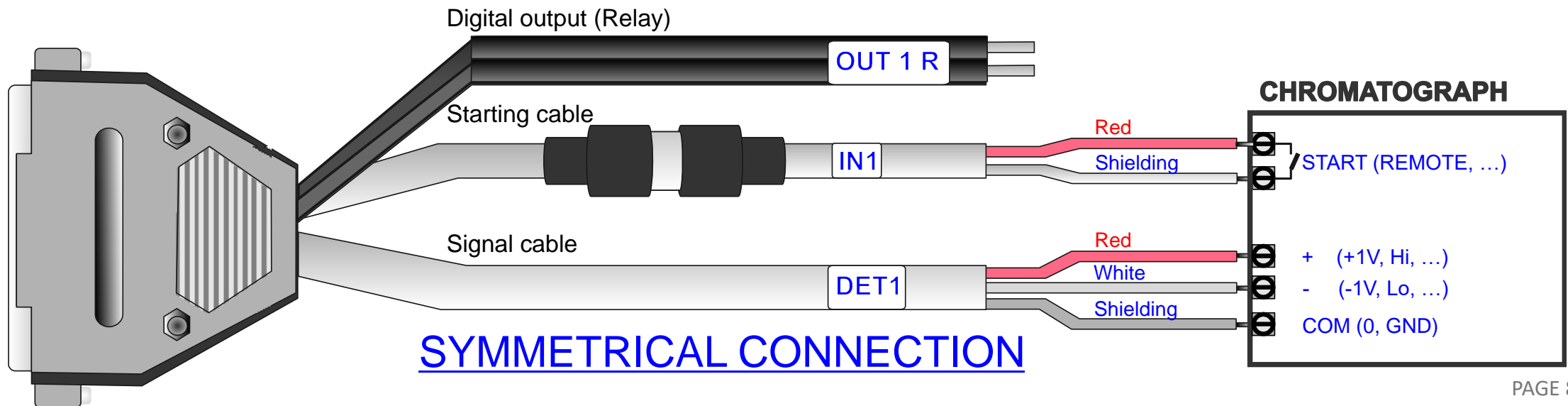
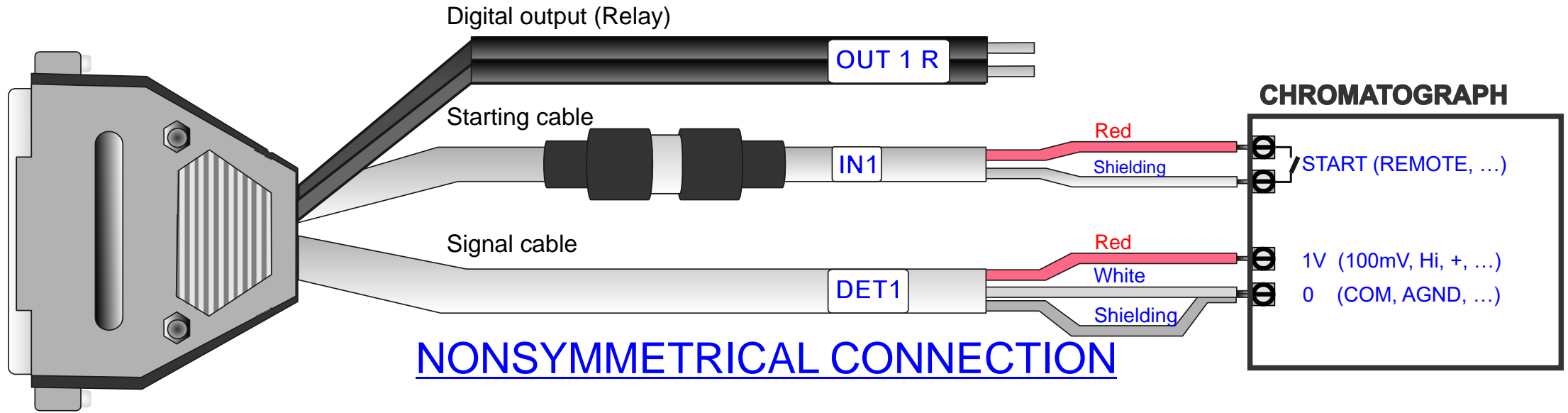
DataApex Installer



→ After installation is successfully finished is time to connect chromatography hardware to PC, not earlier



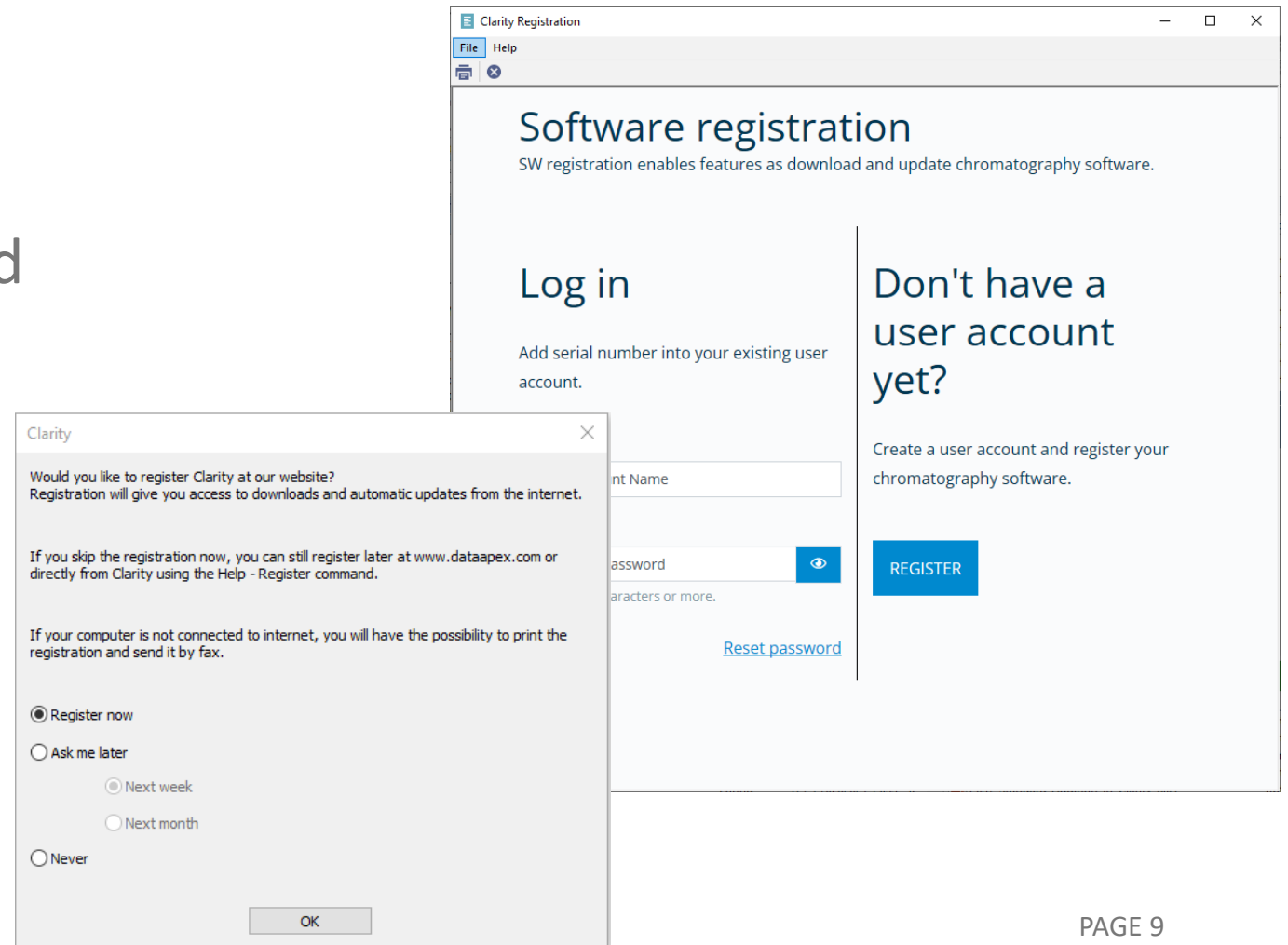
→ Electric connections – the Shielding cable (DETx Signal cable) must be always connected





First start of Clarity - Registration

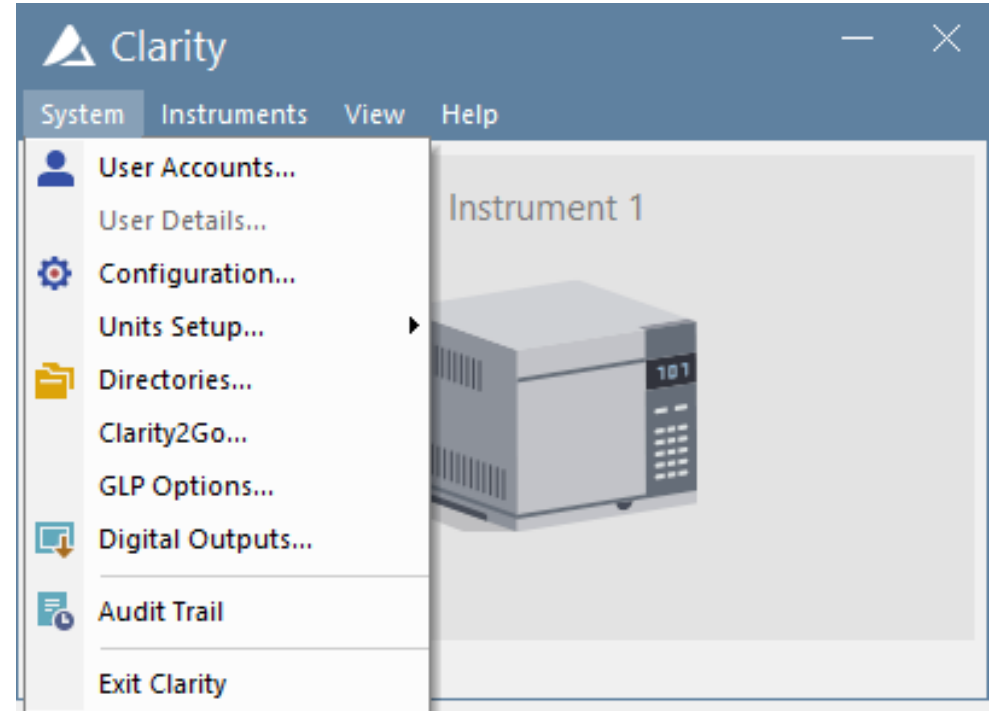
- Window appears after very first start
- Required for free updates and free online support
- Registration can be also anytime later directly from Clarity or via DataApex web page





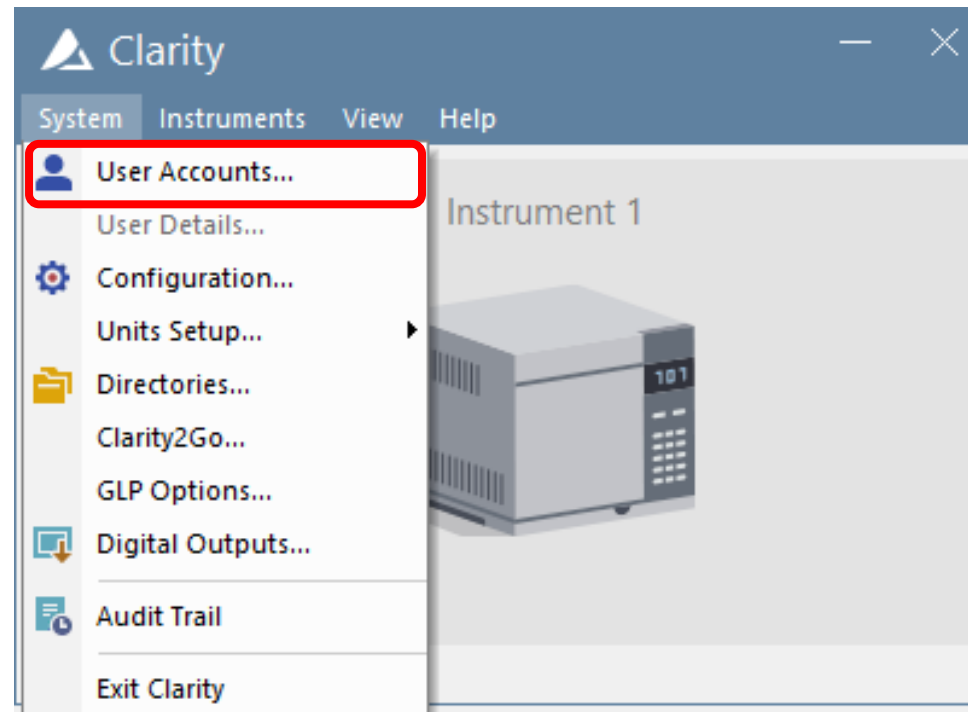
General Settings of Clarity

- Settings valid for entire station
- User Accounts
- Configuration (& Units Setup)
- Directories
- GLP Options
- Digital Outputs





User Accounts





User Accounts

- Administration of user accounts in Clarity
- Settings for passwords and access all over the Clarity
- Setting of individual user privileges

User Accounts

User List

New
Duplicate
Delete

Password Restrictions - Common for All

Min. Length 1 [chars.]
 LifeTime 1 [days]
 Expiration Warning 5 [days]
 Password Reuse 1 [days]
 Auto Lock 10 [min]

User Details for:

User

User Name
Desktop File
Description

Other Users Can

Read & Write
 Read
 No Access

Access To

Instrument 1 Instrument 3
 Instrument 2 Instrument 4

User Access Rights

Open User Accounts Edit Sequence
 Open Configuration Edit Report Style
 Edit Method Select Method
 Edit Chromatogram Open Audit Trail Settings
 Edit Calibration Archive / Restore
 Projects Post Run Settings
 Import Chromatogram Start Acquisition
 Take Control of Locked Instrument

User Info

Password:
Password Changed:
Last Login:
Change Password...

Certificate

No certificates assigned to the selected user

Select Certificate... Clear Certificate

Certificate For Exporting To PDF

OK Cancel Help



User Accounts

User List

Admin
John Doe
User

New Duplicate Delete

Password Restrictions - Common for All

Min. Length: 1 [chars.]

LifeTime: 1 [days]

Expiration Warning: 5 [days]

Password Reuse: 1 [days]

Auto Lock: 10 [min]

User Details for: John Doe

User

User Name: John Doe

Desktop File: John Doe

Description:

Other Users Can

Read & Write

Read

No Access

Access To

Instrument 1 Instrument 3

Instrument 2 Instrument 4

User Access Rights

Open User Accounts

Open Configuration

Edit Method

Edit Chromatogram

Edit Calibration

Projects

Import Chromatogram

Take Control of Locked Instrument

Edit Sequence

Edit Report Style

Select Method

Open Audit Trail Settings

Archive / Restore

Post Run Settings

Start Acquisition

User Info

Password: Blank

Password Changed:

Last Login:

Change Password...

Certificate

No certificates assigned to the selected user

Select Certificate... Clear Certificate

Certificate For Exporting To PDF

OK Cancel Help

Clarity

System Instruments View Help

User Accounts...
User Details...
 Configuration...
 Units Setup...
 Directories...

Instrument 1

User Account Details

User

Analyst Name: John Doe

Desktop File: John Doe

Change Password...

Other Users Can

Write

Read

Access To

Instrument 1

Instrument 2

Instrument 3

Instrument 4

User Access Rights

Open User Accounts

Open Configuration

Edit Method

Edit Chromatogram

Edit Calibration

Projects

Import Chromatogram

Take Control of Locked Instrument

Edit Sequence

Edit Report Style

Select Method

Open Audit Trail Settings

Archive / Restore

Post Run Settings

Start Acquisition

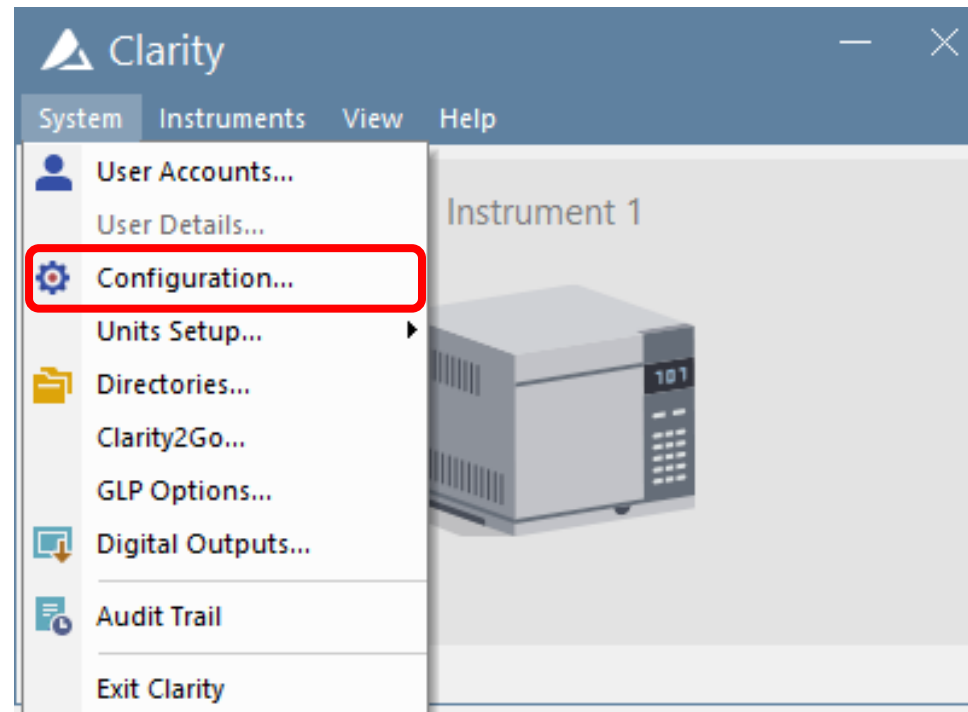
Certificate

Select Certificate... Clear Certificate

OK Help



System Configuration





System Configuration

- Linkage between chromatography hardware and Clarity
- Left side – list of all necessary drivers & overview of their assignments to Instruments
- Right side
 - Instrument Type
 - drivers „on“ Instrument
 - Synchronization between Clarity and hardware

System Configuration

Setup Control Modules

Name	Used	S/N
AS Alias Sampler 1	Instrument 1	
LC GC		
Detector Colbrick		5
Colbrick - 1	Instrument 1	
Colbrick - 2	Instrument 1	
Colbrick - 3		
Colbrick - 4		
Balance Thermostat		
Mistral		
Thermostat 1	Instrument 1	
Valve Fraction Collector		
Capillary Electrophoresis		
Auxiliary ACE		
ACE 1	Instrument 1	
HPD 1	Instrument 1	

Number of Instruments: 4

Instrument 1

Name: Instrument 1

Instrument Type: LC

Name	From
AS Sampler 1	Alias
LC Colbrick - 1 Colbrick - 2	Colbrick
Thermostat Thermostat 1	Mistral
Valve Fraction Collector	
Auxiliary ACE 1 HPD 1	ACE

Data Inputs & Outputs

	Device	Number
Ext. Start Dig. Input:	Alias	1
Ready Dig. Output:	Colbrick	1

Miscellaneous Settings

Units Setup Method Options

Buttons: Add... Remove About... Setup... OK Cancel Help



System Configuration

→ Available Control Modules

- Pool of all Control modules in Clarity
- Search tool with filters

Name	Status	Vendor	Comment	Module Info
AS				
✓ Alias	installed	Spark Holland		Developed by Knauer
✓ Alias	installed	Spark Holland	Including User Program	
✓ Endurance	installed	Spark Holland		
✓ Integrity	installed	Spark Holland		
✓ Marathon	installed	Spark Holland		
✓ Midas	installed	Spark Holland		
✓ Triathlon	installed	Spark Holland		
LC				
✓ SPH1240	installed	Spark Holland		Testing
✓ SPH1299	installed	Spark Holland		
GC				
Detector				
Balance				
Thermostat				
✓ Mistral	installed	Spark Holland		
Valve				
Fraction Collector				
Capillary Electrop...				
Auxiliary				
✓ ACE	installed	Spark Holland	Automatic Cartridge Exchan...	
✓ HPD	installed	Spark Holland	High Pressure Dispenser, as...	
✓ RIDACREST	installed	R-Biopharm	System incorporating Spark ...	
✓ Symbiosis	installed	Spark Holland	System incorporating Spark ...	



System Configuration

→ Setup

- Specific per each Control module
- More information in Help or manual

The screenshot displays four overlapping configuration windows from a software interface:

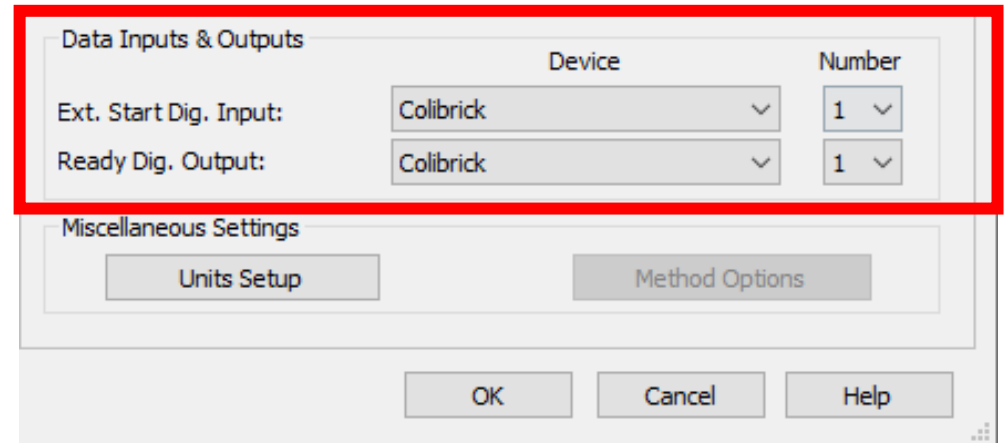
- Alias Setup:** Shows communication settings for a device. The LAN option is selected. The IP address is 192.168.1.209. The serial port is COM1 and the USB port is unavailable. The device ID is 61. The sampler name is 'Sampler 1'. Options include 'Check Door' and 'Enable Alphanumeric Vial Names' (both checked).
- ICF Setup (modified):** A list of Agilent LC systems is shown, with 'Agilent 1100/1200/1260/1290 LC' selected. It includes an 'Auto Configure' button and several checkboxes for device behavior, such as 'This Device Starts the Run in Clarity' (checked).
- DataApex Colibrick Setup:** Configures two channels. Channel 1 and Channel 2 are both set to 'Voltage' with a coefficient of '1 mV / 1 mV'. Both channels have 'Bipolar' checked and 'Synchronize Start with Digital Input' unchecked.
- Pump Setup:** Shows communication and device information for a pump. The COM-Port is COM1. It includes fields for Device-ID, Firmware, and Serial-#. There are also options for 'Quaternary LP Gradient', 'Binary HP Gradient', and 'Online Degasser'. An auxiliary pump section allows naming up to four LC modules (LC 1 to LC 4).



System Configuration

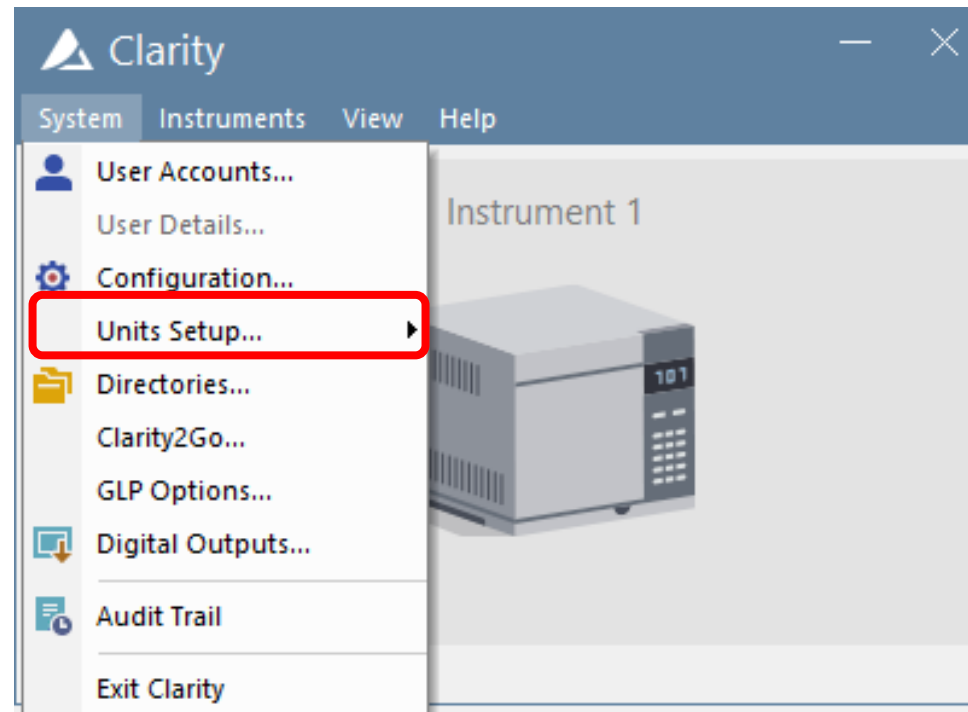
→ Data Inputs & Outputs

- For correct synchronization between Clarity and hardware on the Instrument
- Start Input – definition of the device which triggers the start of analysis
- Ready Output – definition of device which may set ready for next analysis (significant for Sequence)





UNITS SETUP





UNITS SETUP

- Setting of used units
- Basic – Flow, Pressure....
- Auxiliary Signals – Voltage, Current...
- X-Axis (time) – minutes, seconds...
- Valid per each Instrument separately

Instrument 1 - Units

Basic Units

	Units
Flow Rate Units	mL/min
Pressure Units	MPa
Temperature Units	°C
Injection Volume Units	µL

Auxiliary Signal Units

	Units
Voltage Units	V
Power Units	W
Current Units	mA

X-Axis Units

Title	Units	Custom Units
Time	Time - minutes	

Replace Retention Time with: Retention Time

Replace Start Time with: Start Time

Replace End Time with: End Time

Display Area in: Time - seconds

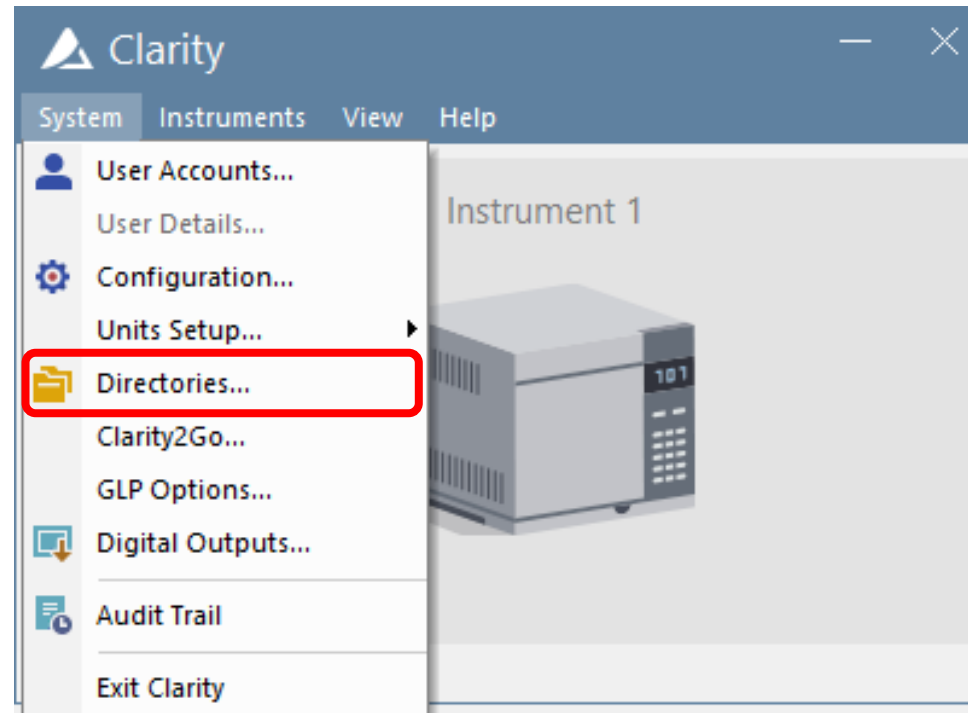
Display W05 in: Time - minutes

Display Drift in: Time - hours

OK Cancel Default Help

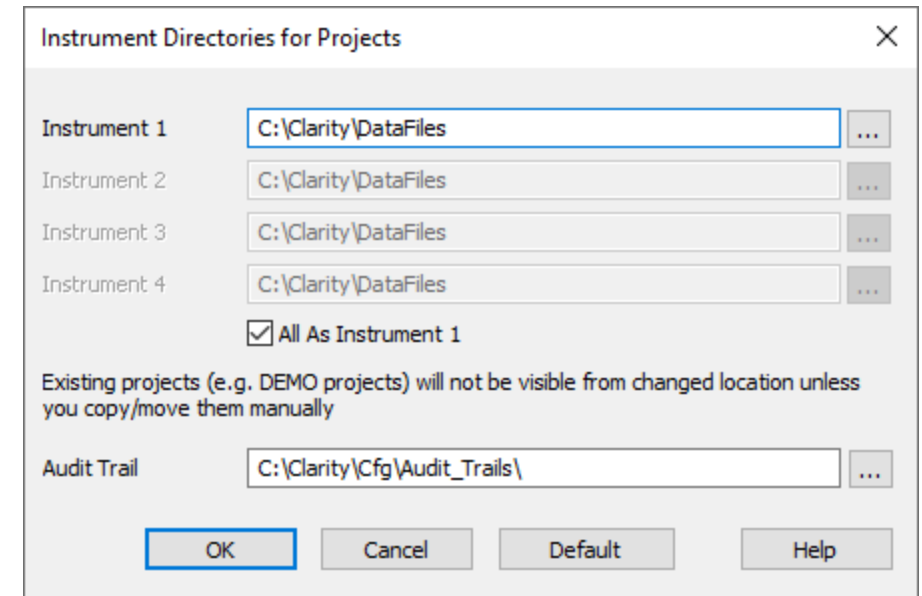
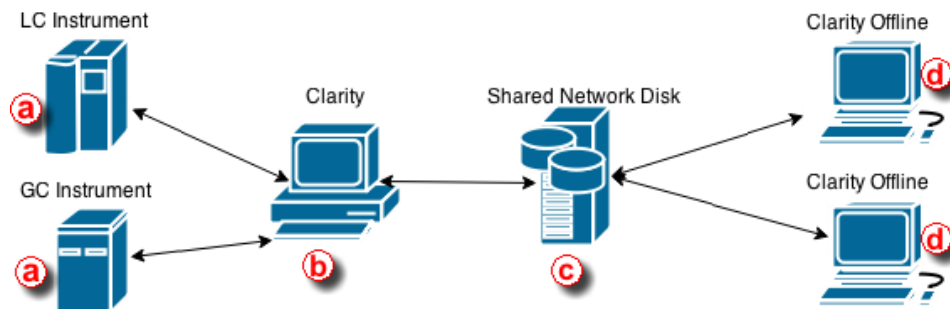


DIRECTORIES



DIRECTORIES

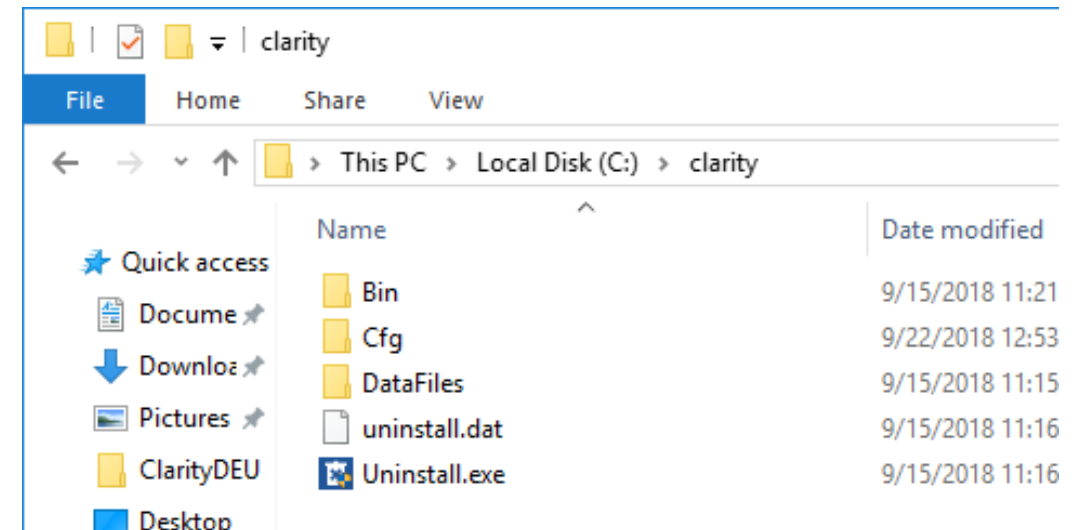
- Setting of data and Audit trail locations
- Directory
 - location where Clarity searches for Projects
- Tool for networked use of Clarity/Clarity Offline





Clarity Installation Folder

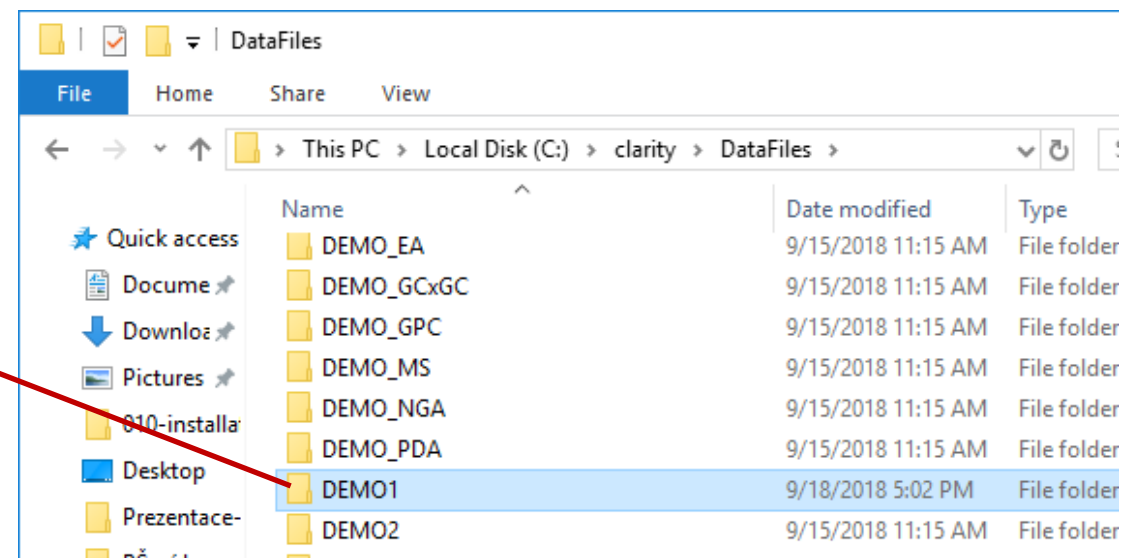
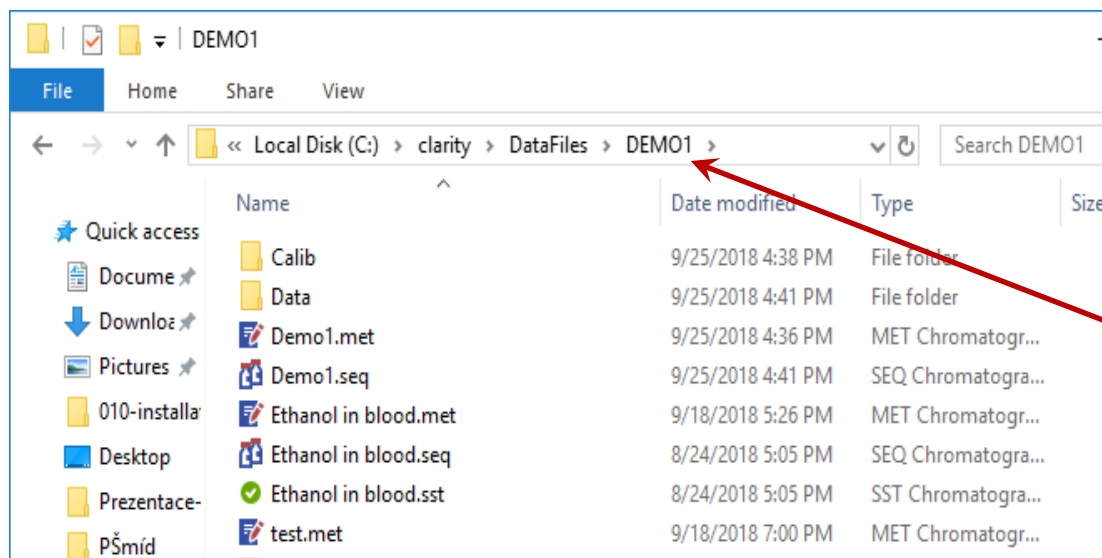
- Bin – binary files – the software itself
- Cfg – configuration of the software
- Datafiles – projects' folders, Common folder, Projects folder
 - Common – report styles, method templates
sequence template &
other shared files
 - Projects – information related to
individual projects





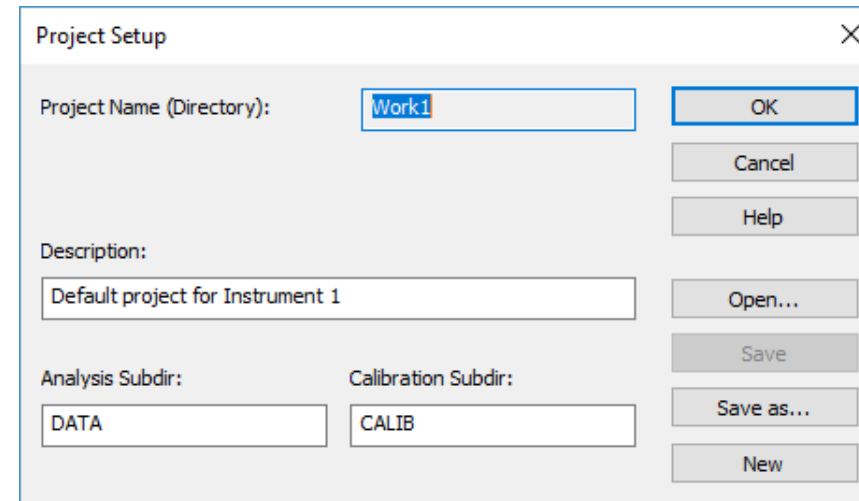
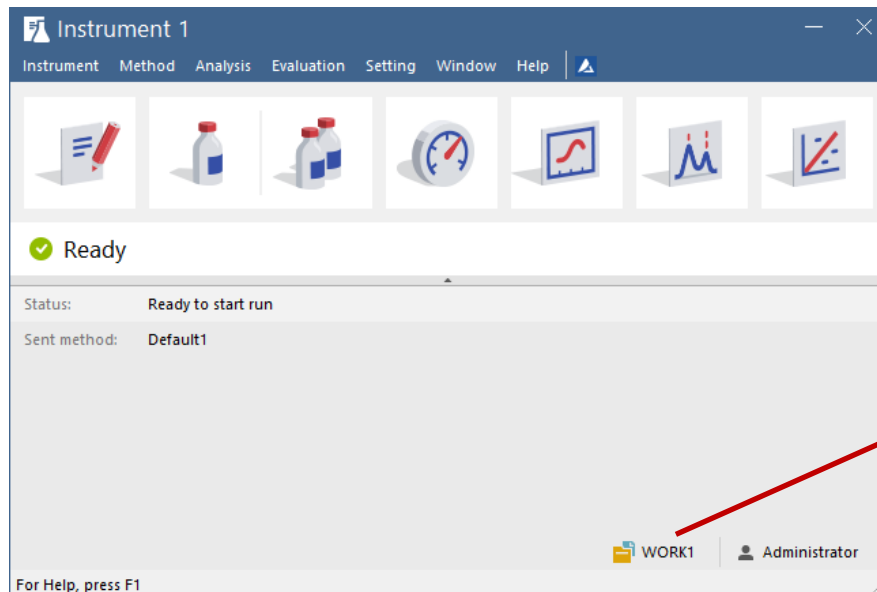
Project folders

- Project folder – methods (*.met), sequences (*.seq)
- Calib subfolder – calibrations (*.cal) & chromatograms of standards (*.prm)
- Data subfolder – sample chromatograms (*.prm)



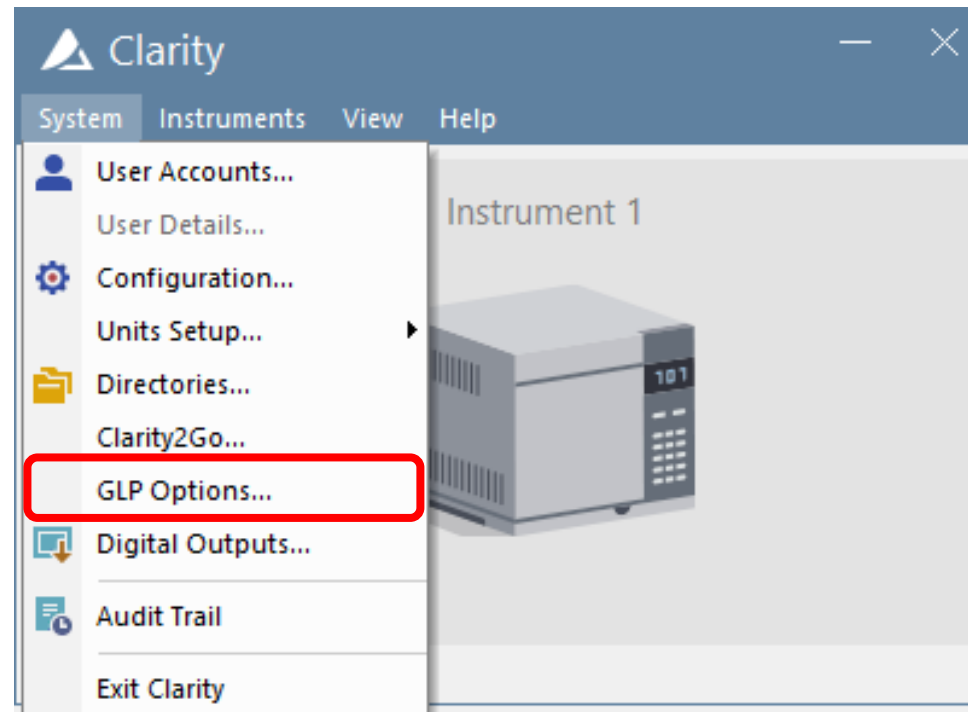
Project Setup dialog

- Can be invoked from Instrument window
- Administration of projects (creating of new ones, renaming...)





GLP OPTIONS





GLP OPTIONS

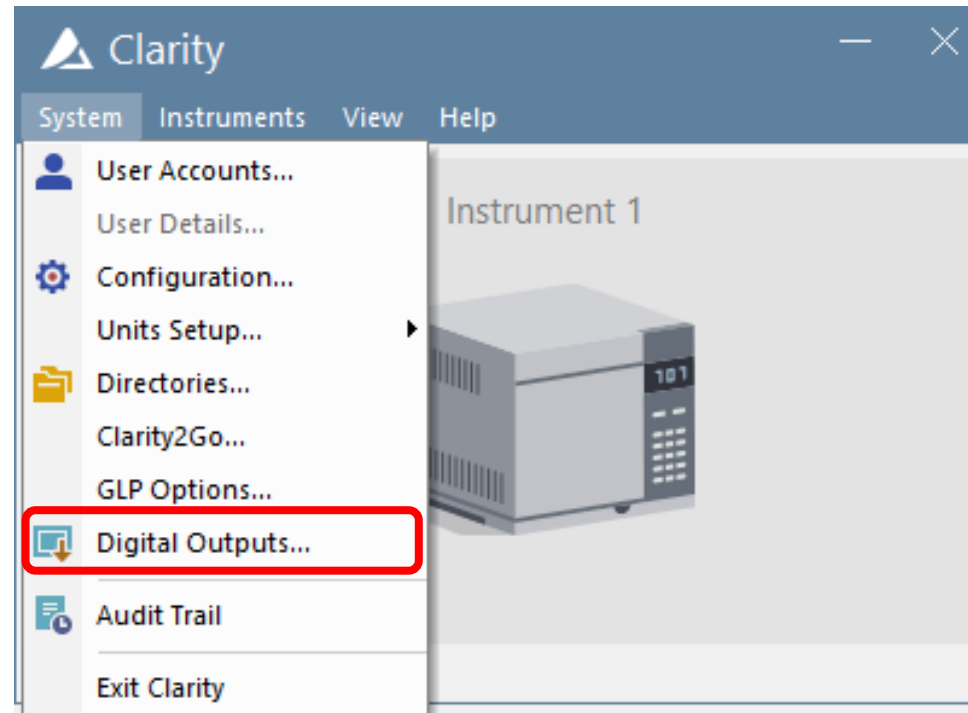
GLP Options

- Allow Chromatogram GLP Mode
- Disallow Chromatogram Files Overwriting
- Generate Chromatogram After Abort
- Disallow Calibration Response Change
- Disallow User List in Login Dialog
- Ask for Reason of File Change
 - Disallow Empty Reason of File Change
- Allow Automated Export of Audit Trail
 - File Name: ...
- Disallow Spike Filter and Spike Removal
- Disallow to Overwrite Existing Files Using Save As
- Allow Chromatograms to Be Stored to Current Project Only
- Disallow Chromatogram Merge Operation

OK Cancel Help

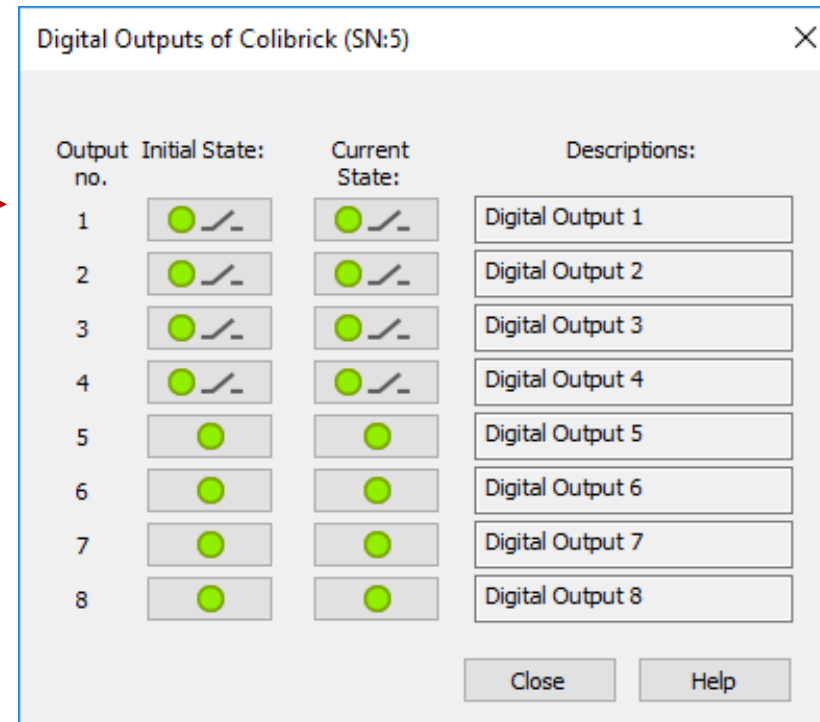
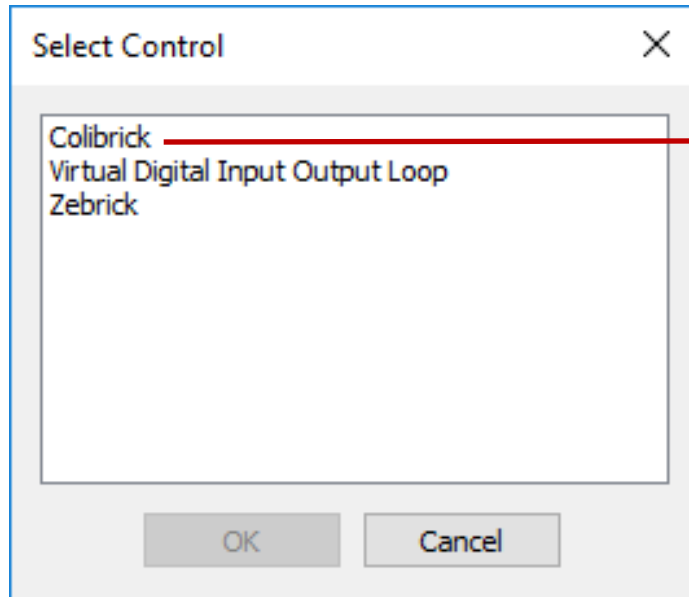


DIGITAL OUTPUTS





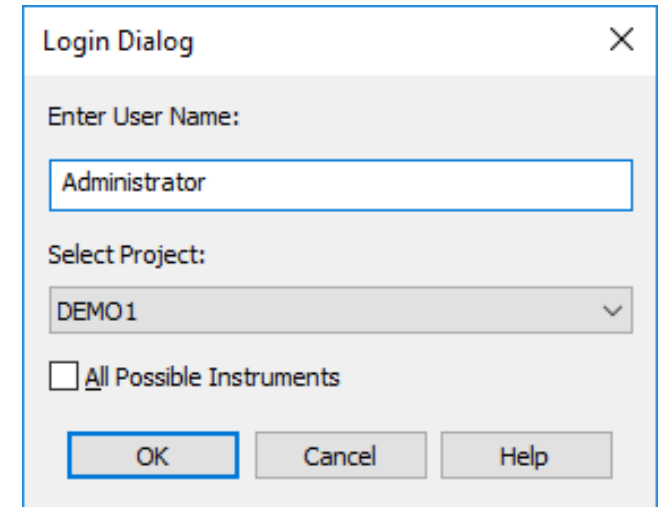
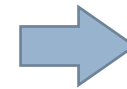
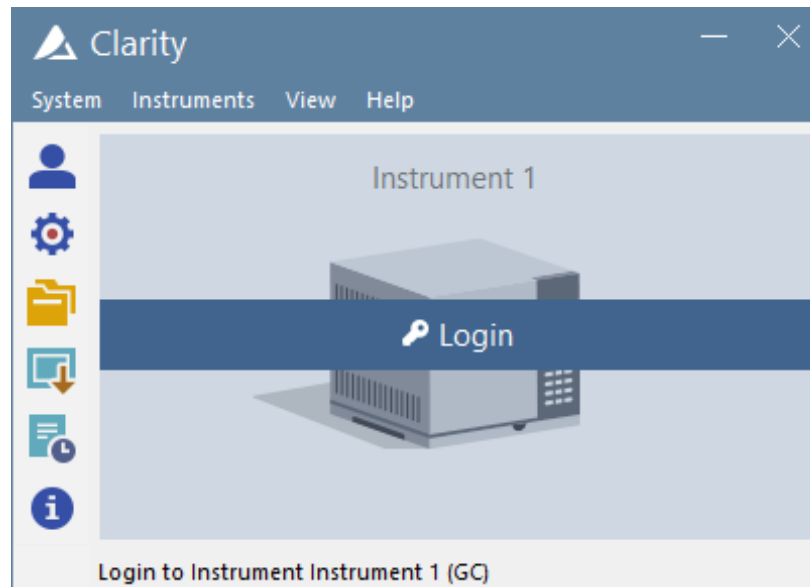
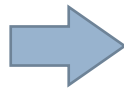
DIGITAL OUTPUTS





First start of Instrument in Clarity

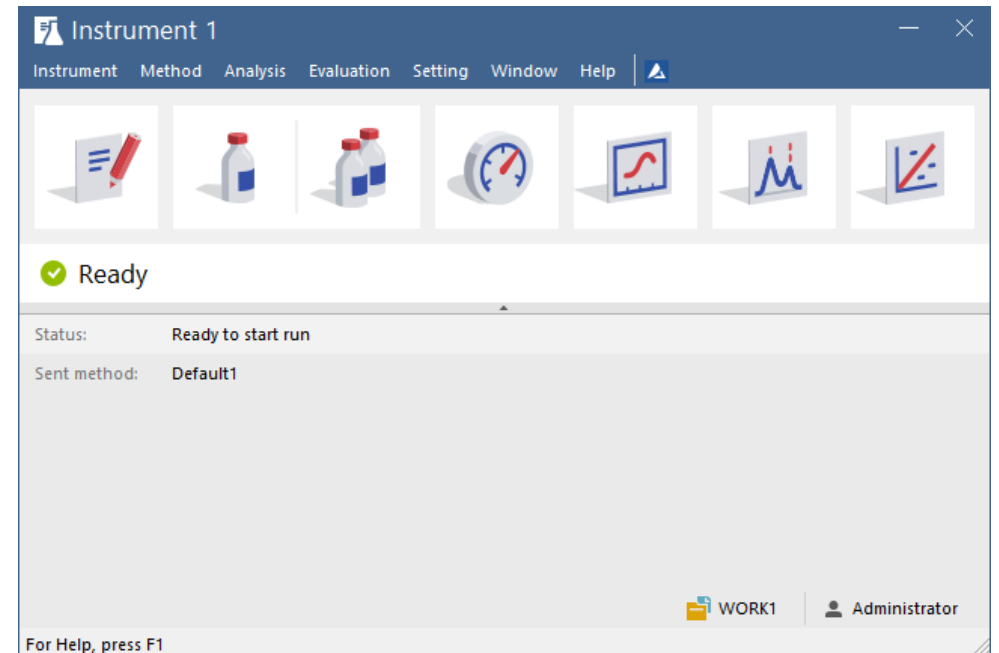
- Start Clarity – appears *Main window*
 - Setup Configuration and other options as needed
- Click Login – appears *Login dialog*





First start of Instrument in Clarity

- Instrument window – center of Clarity
 - Access to other windows of Clarity
 - Instrument status information





...THANK YOU FOR YOUR TIME



SUPPORT@DATAAPEX.COM
WWW.DATAAPEX.COM