

**CoreFocus**

**Report**

**No.326**

GC

FID/FPD/SCD

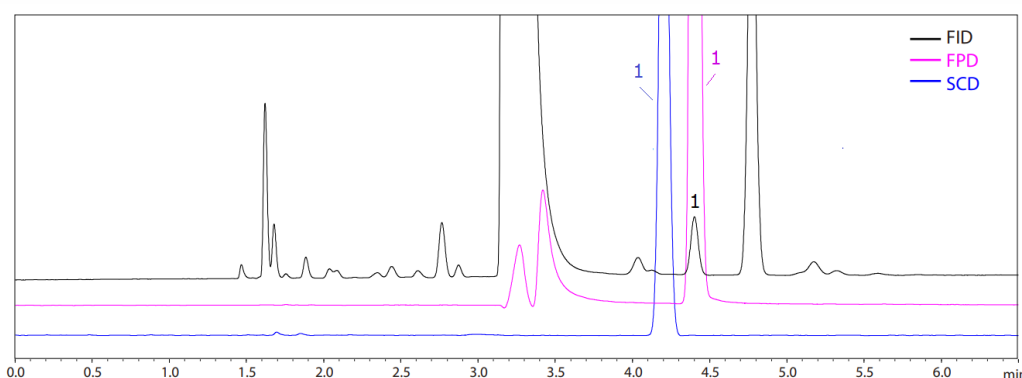
AOC

SH Series

**SH-WAX**

## Analysis of Thiophene in Benzene: Comparison of FPD(S) and SCD Analyses

**Keywords: Organic sulfur compounds, Flame Photometric Detector, Sulfur Chemiluminescence Detector**



1. Thiophene  
(10 ppm(v/v))

Main Unit	: Nexis™ GC-2030/AOC-20i plus
Column	: SH-WAX (30 m x 0.32 mm I.D. df = 1 μm), P/N: 221-75897-30
Injection Volume	: 1 μL
Injection Mode	: Split
Split Ratio	: 1:15
Injection Unit Temp.	: 200 °C
Carrier Gas	: He
Carrier Gas Control	: Linear Velocity 37.7 cm/s
	Column Flow
	FID/FPD 2.00 mL/min
	SCD 1.17 mL/min
Column Temp.	: 75 °C

Detector	: FID-2030
Interface Temp.	: 200 °C
Detector Gas	: H <sub>2</sub> 32 mL/min, Air 200 mL/min
Makeup Gas	: He 24 mL/min

Detector	: FPD-2030
Filter	: S
Interface Temp.	: 200 °C
Detector Gas	: H <sub>2</sub> 40 mL/min, Air 60 mL/min

Detector	: SCD-2030
Interface Temp.	: 200 °C
Furnace Temp.	: 850 °C
Detector Gas	: H <sub>2</sub> 100 mL/min, N <sub>2</sub> 10 mL/min, O <sub>2</sub> 12 mL/min, O <sub>3</sub> 25 mL/min

Source : Application News G308 ([JP](#), [ENG](#))

CoreFocus and Nexis are trademarks of Shimadzu Corporation or its affiliated companies in Japan and/or other countries.

**Shimadzu Corporation**

[www.shimadzu.com/an/](http://www.shimadzu.com/an/)

**For Research Use Only. Not for use in diagnostic procedures.**

This publication may contain references to products that are not available in your country. Please contact us to check the availability of these products in your country.

The content of this publication shall not be reproduced, altered or sold for any commercial purpose without the written approval of Shimadzu.

Company names, products/service names and logos used in this publication are trademarks and trade names of Shimadzu Corporation, its subsidiaries or its affiliates, whether or not they are used with trademark symbol "TM" or "®".

Third-party trademarks and trade names may be used in this publication to refer to either the entities or their products/services, whether or not they are used with trademark symbol "TM" or "®".

Shimadzu disclaims any proprietary interest in trademarks and trade names other than its own.

The information contained herein is provided to you "as is" without warranty of any kind including without limitation warranties as to its accuracy or completeness. Shimadzu does not assume any responsibility or liability for any damage, whether direct or indirect, relating to the use of this publication. This publication is based upon the information available to Shimadzu on or before the date of publication, and subject to change without notice.