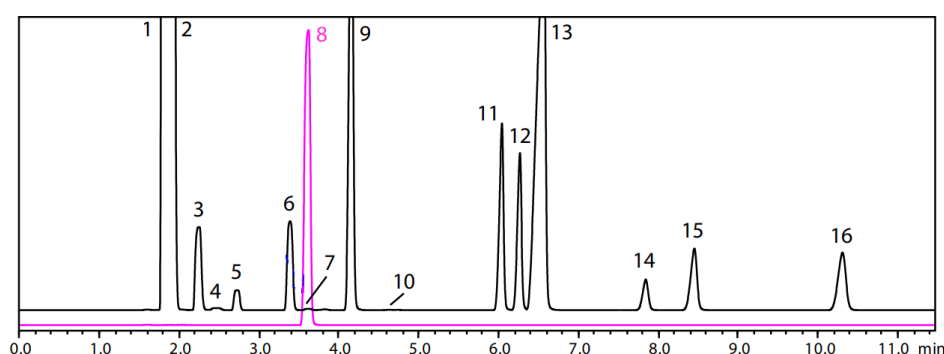


CoreFocus
Report
No.334

GC FID HS SH Series

SH-PolarWax
Analysis of Residual Solvents in
Pharmaceuticals

Keywords: JP17 Supplement II, USP 467



1. Cyclohexane
2. Methyl cyclohexane
3. trans-1,2-Dichloroethylene + Tetrahydrofuran
4. Methanol
5. Methylene chloride (DCM)
6. cis-1,2- Dichloroethylene
7. Acetonitrile
8. Methylisobutylketone (MiBK)
9. Toluene
10. 1,4-Dioxane
11. Ethylbenzene
12. p-Xylene
13. m-Xylene
14. Cumene
15. o-Xylene
16. Chlorobenzene

Main Unit	: Nexis™ GC-2030
Detector	: FID-2030 flame ionization detector
Column	: SH-PolarWax (30 m x 0.32 mm I.D. df = 0.25 μm), P/N: 221-75972-30
Column Temp.	: 50 °C (20 min) - 6 °C/min - 165 °C (20 min) Total 59.17 min
Injection Mode	: Split 1:10
Carrier Gas Controller	: Linear Velocity (He) 35 cm/s
Detector Temp.	: 250 °C
Detector Gas	: H ₂ 32 mL/min, Air 200 mL/min
Make up	: 24 mL/min (He)
Injection Volume	: 1 mL

HS-20	
Oven Temp.	: 80 °C
Sample Line Temp.	: 110 °C
Transfer Line Temp.	: 120 °C
Vial Volume	: 20 mL
Vial Heat-retention Time	: 60 min
Vial Pressurization Time	: 1 min
Vial Pressure	: 75 kPa
Loading Time	: 0.5 min
Needle Flush Time	: 5 min

Source : Application News G324 ([JP](#), [ENG](#))

CoreFocus and Nexis are trademarks of Shimadzu Corporation or its affiliated companies in Japan and/or other countries.

Shimadzu Corporation
www.shimadzu.com/an/

For Research Use Only. Not for use in diagnostic procedures.

This publication may contain references to products that are not available in your country. Please contact us to check the availability of these products in your country.

The content of this publication shall not be reproduced, altered or sold for any commercial purpose without the written approval of Shimadzu.

Company names, products/service names and logos used in this publication are trademarks and trade names of Shimadzu Corporation, its subsidiaries or its affiliates, whether or not they are used with trademark symbol "TM" or "®". Third-party trademarks and trade names may be used in this publication to refer to either the entities or their products/services, whether or not they are used with trademark symbol "TM" or "®".

Shimadzu disclaims any proprietary interest in trademarks and trade names other than its own.

The information contained herein is provided to you "as is" without warranty of any kind including without limitation warranties as to its accuracy or completeness. Shimadzu does not assume any responsibility or liability for any damage, whether direct or indirect, relating to the use of this publication. This publication is based upon the information available to Shimadzu on or before the date of publication, and subject to change without notice.