

CoreFocus
Report
No.342

GC

FID

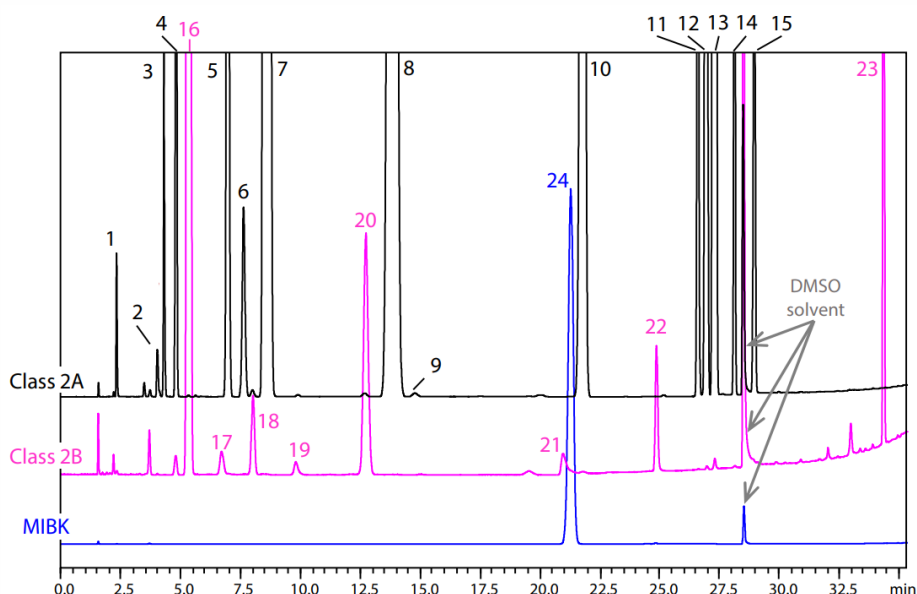
HS

SH Series

SH-I-624Si MS

Analysis of Residual Solvents in Pharmaceuticals

Keywords: Water-Insoluble Samples, N₂ Carrier, JP17 Supplement II, USP 467



Main Unit : Nexis™ GC-2030
 Detector : FID-2030 flame ionization detector
 Column : SH-I-624Si MS (30 m x 0.53 mm I.D. df = 3 μm), P/N: 227-36078-01
 Column Temp. : 40 °C(20 min) - 10 °C/min - 240 °C(20 min) Total 60 min
 Injection Mode : Split 1:5
 Carrier Gas Controller : Linear Velocity (N₂)
 Linear Velocity : 35 cm/s
 Detector Temp. : 250 °C
 FID H₂ Flow Rate : 32 mL/min
 FID Make Up Flow Rate : 24 mL/min (N₂)
 FID Air Flow Rate : 200 mL
 Injection Volume : 1 mL

HS-20
 Oven Temp. : 80 °C
 Sample Line Temp. : 90 °C
 Transfer Line Temp. : 105 °C
 Vial Shaking Level : Off
 Vial Volume : 20 mL
 Vial Equilibrating Time : 45 min
 Vial Pressurization Time : 1 min
 Vial Pressure : 68.9 kPa
 Loading Time : 0.5 min
 Needle Flush Time : 5 min

Source : Application News G326 ([JP](#), [ENG](#))

CoreFocus and Nexis are trademarks of Shimadzu Corporation or its affiliated companies in Japan and/or other countries.

Shimadzu Corporation
www.shimadzu.com/an/

For Research Use Only. Not for use in diagnostic procedures.

This publication may contain references to products that are not available in your country. Please contact us to check the availability of these products in your country.

The content of this publication shall not be reproduced, altered or sold for any commercial purpose without the written approval of Shimadzu.

Company names, products/service names and logos used in this publication are trademarks and trade names of Shimadzu Corporation, its subsidiaries or its affiliates, whether or not they are used with trademark symbol "TM" or "®". Third-party trademarks and trade names may be used in this publication to refer to either the entities or their products/services, whether or not they are used with trademark symbol "TM" or "®".

Shimadzu disclaims any proprietary interest in trademarks and trade names other than its own.

The information contained herein is provided to you "as is" without warranty of any kind including without limitation warranties as to its accuracy or completeness. Shimadzu does not assume any responsibility or liability for any damage, whether direct or indirect, relating to the use of this publication. This publication is based upon the information available to Shimadzu on or before the date of publication, and subject to change without notice.