

CoreFocus
Report
No.353

GC

FID

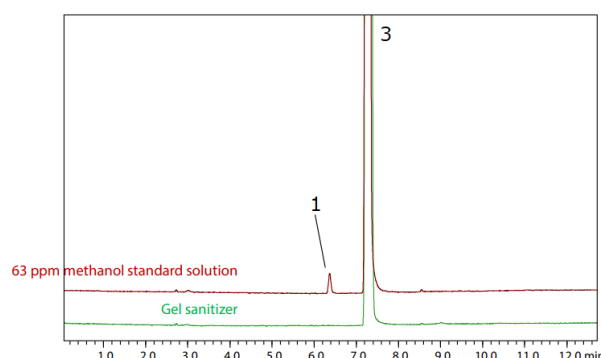
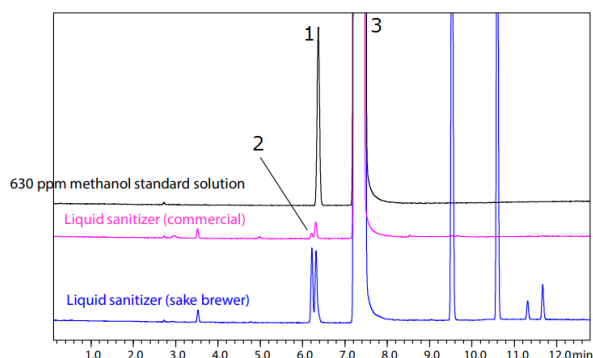
AOC

SH Series

SH-Wax

Analysis of Methanol in Ethanol-based Sanitizer

Keywords: Methanol concentration in ethanol



1. Methanol
2. Ethyl acetate
3. Ethanol

Main Unit	: Nexis™ GC-2030 + AOC-20i Plus
Detector	: FID-2030 flame ionization detector
Column	: SH-Wax (30 m x 0.32 mm I.D. df = 0.50 μm), P/N: 221-75896-30
Column Temp.	: 40 °C (5 min) - 10 °C/min - 100 °C (2 min) Total 13 min
Injection Temp.	: 250 °C
Injection Mode	: Split
Split Ratio	: 1:100
Carrier Gas	: He
Carrier Gas Controller	: Constant Column Flow Rate (1 mL/min)
Detector Temp.	: 250 °C
FID H ₂ Flow Rate	: 32 mL/min
FID Make Up Gas Flow Rate	: 24 mL/min (He)
FID Air Flow Rate	: 200 mL/min
Injection Volume	: 1.0 μL

Sample Preparation Method

	Liquid		Gel	
	Standard	Sample	Standard	Sample
National Tax Agency Predetermined Analysis Method Item 11	630 ppm MeOH (diluted with 80 % EtOH)	Not diluted	63 ppm MeOH (diluted with 8 % EtOH)	Diluted 10x with water

Source : Application News G337 ([JP](#), [ENG](#))

CoreFocus and Nexis are trademarks of Shimadzu Corporation or its affiliated companies in Japan and/or other countries.

Shimadzu Corporation
www.shimadzu.com/an/

For Research Use Only. Not for use in diagnostic procedures.

This publication may contain references to products that are not available in your country. Please contact us to check the availability of these products in your country.

The content of this publication shall not be reproduced, altered or sold for any commercial purpose without the written approval of Shimadzu.

Company names, products/service names and logos used in this publication are trademarks and trade names of Shimadzu Corporation, its subsidiaries or its affiliates, whether or not they are used with trademark symbol "TM" or "®". Third-party trademarks and trade names may be used in this publication to refer to either the entities or their products/services, whether or not they are used with trademark symbol "TM" or "®".

Shimadzu disclaims any proprietary interest in trademarks and trade names other than its own.

The information contained herein is provided to you "as is" without warranty of any kind including without limitation warranties as to its accuracy or completeness. Shimadzu does not assume any responsibility or liability for any damage, whether direct or indirect, relating to the use of this publication. This publication is based upon the information available to Shimadzu on or before the date of publication, and subject to change without notice.