

CoreFocus
Report
No.395

GCMS

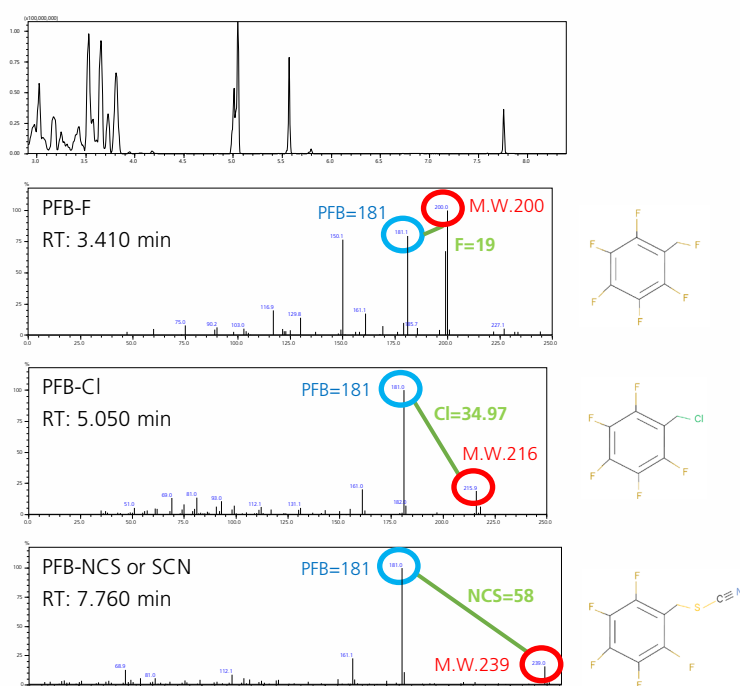
HS

SH Series

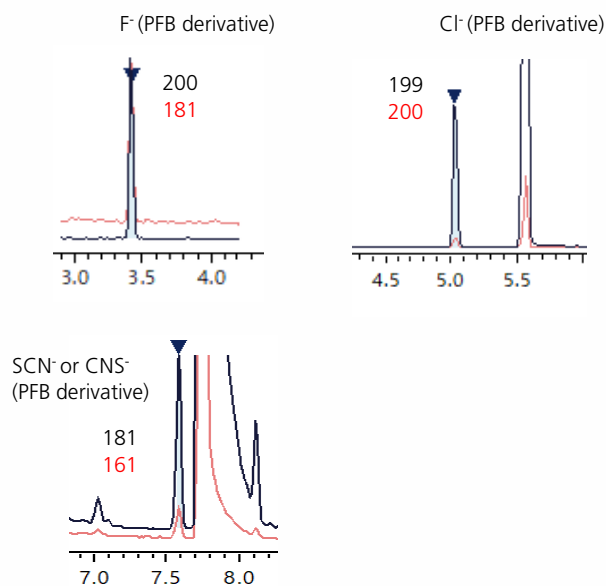
SH-I-5MS

Semi-Quantitative Analysis of Anions in Water

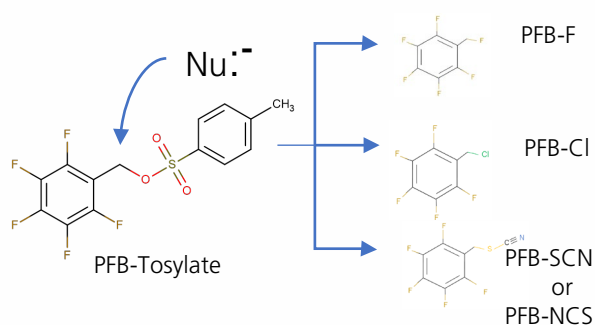
Keywords: fluoride contamination, drinking water



Mass Spectra Obtained from a 50 µg/mL Mixed Solution



Mass Chromatograms Obtained from a 5 µg/mL Solution



Model	:	GCMS-QP™2020 NX/HS-20
Column	:	SH-I-5MS (30 m x 0.25 mm I.D., 0.25 µm) P/N: 221-75940-30

HS

Oven temp.	:	80 °C
Sample line temp.	:	150 °C
Transfer line temp.	:	150 °C
Pressurizing gas pressure	:	100 kPa (He)
Equilibrating time	:	5 min
Multi injection time	:	1

GC

Injection mode	:	Split
Split ratio	:	5
Carrier gas	:	He
Control mode	:	Constant linear velocity (51.0 cm/s)
Column oven temp.	:	40 °C (2 min) - (20 °C/min) - 240 °C (2 min) Total 14.00 min

MS

Ion source temp.	:	200 °C
Interface temp.	:	240 °C
Measurement mode	:	Simultaneous scan/SIM (FASST)
Scan mass range (<i>m/z</i>)	:	35 - 400
SIM ions (<i>m/z</i>)	:	Refer to Page 1 (Mass Chromatograms)
Event time	:	0.30 s

Source : Application News 01-00038 ([JP](#), [ENG](#))

CoreFocus and GCMS-TQ are trademarks of Shimadzu Corporation or its affiliated companies in Japan and/or other countries.

Shimadzu Corporation

www.shimadzu.com/an/

For Research Use Only. Not for use in diagnostic procedures.

This publication may contain references to products that are not available in your country. Please contact us to check the availability of these products in your country.

The content of this publication shall not be reproduced, altered or sold for any commercial purpose without the written approval of Shimadzu.

Company names, products/service names and logos used in this publication are trademarks and trade names of Shimadzu Corporation, its subsidiaries or its affiliates, whether or not they are used with trademark symbol "TM" or "®". Third-party trademarks and trade names may be used in this publication to refer to either the entities or their products/services, whether or not they are used with trademark symbol "TM" or "®".

Shimadzu disclaims any proprietary interest in trademarks and trade names other than its own.

The information contained herein is provided to you "as is" without warranty of any kind including without limitation warranties as to its accuracy or completeness. Shimadzu does not assume any responsibility or liability for any damage, whether direct or indirect, relating to the use of this publication. This publication is based upon the information available to Shimadzu on or before the date of publication, and subject to change without notice.