

CoreFocus
Report
No.411

GC

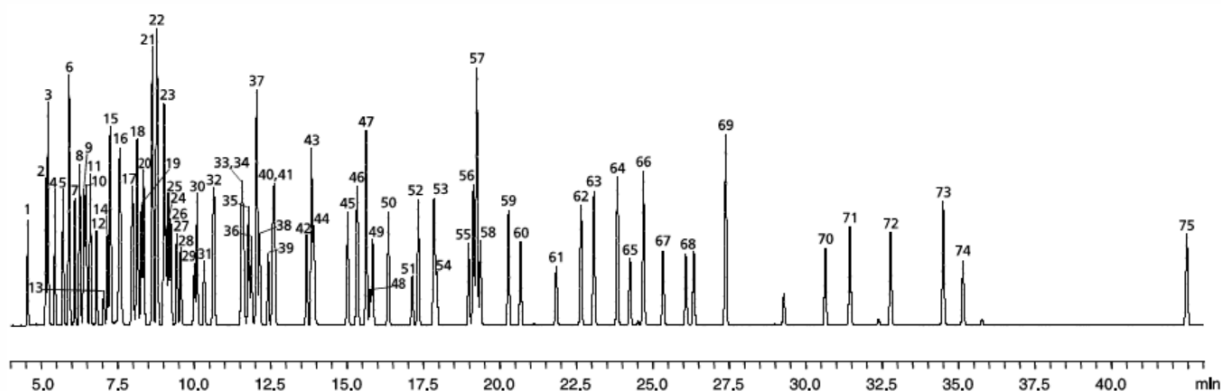
FID

SH Series

SH-200

Analysis of Organic Solvents

Keywords: environment, simultaneous analysis



1. Methanol
2. Ethanol
3. Acetaldehyde + Ethyl Ether
4. 1,1-Dichloroethylene
5. Isopropanol
6. Dichloromethane + Hexane
7. trans-1,2-Dichloroethylene
8. tert.-Butanol
9. tert.-Butyl Methyl Ether
10. Isopropyl Ether
11. n-Propanol
12. Ethyl Formate
13. Chloroform
14. Methyl Acetate
15. Cyclohexane
16. Tetrachloromethane + sec.-Butanol
17. Isooctane
18. Isobutanol + 1,1,1-Trichloroethane
19. Acetonitrile
20. Acrylonitrile
21. Benzene
22. Tetrahydrofuran + methylcyclohexane
23. Methyl Acrylate + 1,2-Dichloroethane
24. Trichloroethylene
25. n-Butanol

26. Ethyl Acetate
27. 1,2-Dimethoxyethane
28. Ethylene Glycol Monomethyl Ether
29. Ethylenechlorohydrin
30. Methyl Ethyl Ketone
31. Nitromethane
32. Propylene Glycol Monomethyl Ether + Isopropyl Acetate
33. Ethyl Acrylate
34. Isoamyl Alcohol
35. Methyl Methacrylate
36. Ethylene Glycol Monoethyl Ether
37. Toluene
38. 1,4-Dioxane
39. tetrachloroethylene
40. n-Propyl Acetate
41. n-Amyl Alcohol
42. Epichlorohydrin
43. Pyridine
44. Ethylene Glycol Monoisopropyl Ether
45. Isobutyl Acetate
46. Methyl Isobutyl Ketone + Ethylbenzene
47. Chlorobenzene
48. p-Xylene
49. m-Xylene
50. n-Butyl Acetate

51. o-Xylene
52. Methyl Butyl Ketone
53. Cyclohexanol
54. 1,1,2,2-Tetrachloroethane
55. Isoamyl Acetate
56. Butyl Acrylate
57. Ethylene Glycol Monobutyl Ether
58. Anisole + Propylene Glycol Monomethyl Ether Acetate
59. n-Amyl Acetate
60. Ethylene Glycol Monoethyl Ether Acetate
61. N,N-Dimethylformamide
62. Isooctanol
63. Cyclohexanone
64. o-Dichlorobenzene
65. Diethylene Glycol Monoethyl Ether
66. Benzyl Alcohol
67. N,N-Dimethylacetamide
68. Dimethyl Sulfoxide
69. Tetralin
70. Diethylene Glycol Monobutyl Ether
71. 2-Ethylhexyl Acrylate
72. N-Methylpyrrolidone
73. Isophorone
74. 1,3-Dimethyl-2-Imidazolidinone
75. Sulfolane

Instrument	: GC-2010
Column	: SH-200 (60 m x 0.32 mm I.D. df = 1.00 µm), P/N: 227-36186-02
Column Temp.	: 40 °C (0 min) - 4 °C/min - 310 °C
Carrier Gas	: He, 25 cm/s constant linear velocity mode
Inj. Temp.	: 250 °C
Detector	: FID, 330 °C
Split Ratio	: 1:50

CoreFocus is a trademark of Shimadzu Corporation or its affiliated companies in Japan and/or other countries.

Shimadzu Corporation
www.shimadzu.com/an/

For Research Use Only. Not for use in diagnostic procedures.

This publication may contain references to products that are not available in your country. Please contact us to check the availability of these products in your country.

The content of this publication shall not be reproduced, altered or sold for any commercial purpose without the written approval of Shimadzu.

Company names, products/service names and logos used in this publication are trademarks and trade names of Shimadzu Corporation, its subsidiaries or its affiliates, whether or not they are used with trademark symbol "TM" or "®".

Third-party trademarks and trade names may be used in this publication to refer to either the entities or their products/services, whether or not they are used with trademark symbol "TM" or "®".

Shimadzu disclaims any proprietary interest in trademarks and trade names other than its own.

The information contained herein is provided to you "as is" without warranty of any kind including without limitation warranties as to its accuracy or completeness. Shimadzu does not assume any responsibility or liability for any damage, whether direct or indirect, relating to the use of this publication. This publication is based upon the information available to Shimadzu on or before the date of publication, and subject to change without notice.