

CoreFocus
Report
No. 426

GC

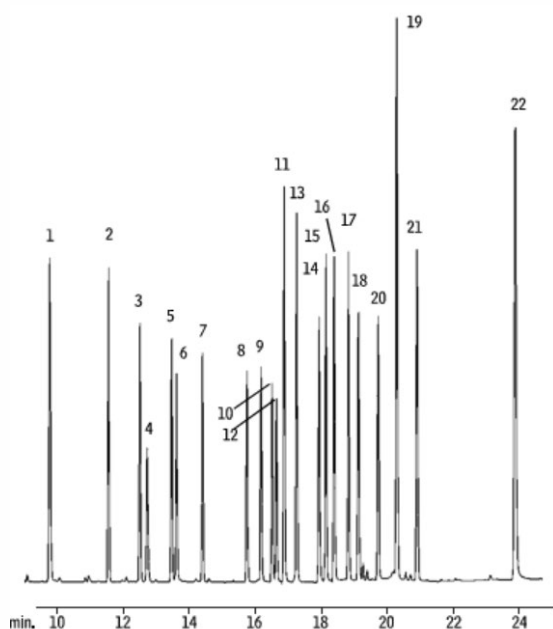
ECD

SH Series

SH-CLP II

Analysis of Organochlorine Pesticides (US EPA Method 8081)

Keywords: environment, food, pesticides, dedicated columns for organochlorine, herbicides



1. 2,4,5,6-Tetrachlorom-xylene
2. α -BHC (α -HCH)
3. γ -BHC (lindane)
4. β -BHC (β -HCH)
5. δ -BHC (δ -HCH)
6. Heptachlor
7. Aldrin
8. Heptachlor epoxide
9. γ -Chlordane
10. α -Chlordane
11. 4,4'-DDE
12. Endosulfan I
13. Dieldrin
14. Endrin
15. 4,4'-DDD
16. Endosulfan II
17. 4,4'-DDT
18. Endrin aldehyde
19. Methoxychlor
20. Endosulfan sulfate
21. Endrin ketone
22. Decachlorobiphenyl

Instrument	: GC
Column	: SH-CLP II (30 m x 0.32 mm I.D. df = 0.25 μ m), P/N: 227-36267-01
Column Temp.	: 120 °C (1 min) - 9 °C/min - 300 °C (10 min)
Inj.	: Direct
Inj. Temp.	: 200 °C
Detector	: ECD, 300 °C with anode purge
Dead Time	: 1.9 min
Head pressure	: 8.7 psi [60 kPa] (constant)
Carrier Gas	: He, 1.3 mL/min at 120 °C

CoreFocus is a trademark of Shimadzu Corporation or its affiliated companies in Japan and/or other countries.

Shimadzu Corporation
www.shimadzu.com/an/

For Research Use Only. Not for use in diagnostic procedures.

This publication may contain references to products that are not available in your country. Please contact us to check the availability of these products in your country.

The content of this publication shall not be reproduced, altered or sold for any commercial purpose without the written approval of Shimadzu.

Company names, products/service names and logos used in this publication are trademarks and trade names of Shimadzu Corporation, its subsidiaries or its affiliates, whether or not they are used with trademark symbol "TM" or "®". Third-party trademarks and trade names may be used in this publication to refer to either the entities or their products/services, whether or not they are used with trademark symbol "TM" or "®".

Shimadzu disclaims any proprietary interest in trademarks and trade names other than its own.

The information contained herein is provided to you "as is" without warranty of any kind including without limitation warranties as to its accuracy or completeness. Shimadzu does not assume any responsibility or liability for any damage, whether direct or indirect, relating to the use of this publication. This publication is based upon the information available to Shimadzu on or before the date of publication, and subject to change without notice.