

**CoreFocus**  
**Report**  
**No.480**

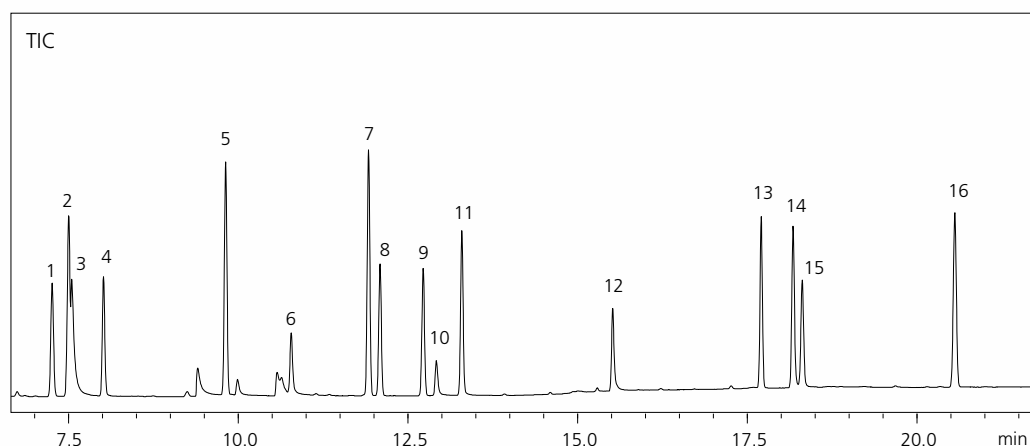
GC-MS

SH Series

**SH-I-624Sil MS**

**Analysis of VOCs**

**Keywords: Volatile Organic Compounds, GB/T 37884-2019**



- |                  |                     |                       |   |
|------------------|---------------------|-----------------------|---|
| 1. i - Butanol   | 5. Toluene          | 9. o -Xylene          | 13. 2-(2-Ethoxyethoxy) ethyl acetate          |
| 2. Benzene       | 6. 1, 2-Propanediol | 10. 1, 3-Propanediol  | 14. Diethylene glycol monobutyl ether         |
| 3. Triethylamine | 7. Ethyl benzene    | 11. 2-Butoxy ethanol  | 15. 2,2,4-Trimethyl-1,3-pentanediol           |
| 4. n -Butanol    | 8. m, p -Xylene     | 12. Diethylene glycol | 16. Diethylene glycol monobutyl ether acetate |

Autosampler : TD-30R  
Instrument : GCMS-QP2020 NX

**[TD-30R]**

Tube desorb temp. : 300 °C (10 min)  
Tube desorb flow : 60 mL/min  
Second trap : Tenax™ TA  
Second trap cooling : -20 °C  
temp.  
Second trap desorb : 300 °C (10 min)  
temp.  
Joint temp. : 300 °C  
Valve temp. : 300 °C  
Transfer line temp. : 300 °C

**[GCMS]**

Flow control mode : Pressure (80 kPa)  
Injection mode : Split (split ratio 20)  
Carrier gas : He  
Purge flow rate : 10 mL/min  
Column : SH-I-624Sil MS 60 m x 0.32 mm I.D., df= 1.80  
μm  
(P/N: 221-75963-60)  
Column temp. program : 40 °C → 10 °C/min → 180 °C → 40 °C/min →  
230 °C (10.75 min)  
Interface temp. : 240 °C  
Ion source temp. : 230 °C  
Acquisition mode : Scan  
m/z range : 33~450 amu  
Event time : 0.3 min

Source : Application News 03-GCM-345-JP ([JP](#))

CoreFocus is a trademark of Shimadzu Corporation or its affiliated companies in Japan and/or other countries.

**Shimadzu Corporation**  
**www.shimadzu.com/an/**

**For Research Use Only. Not for use in diagnostic procedures.**

This publication may contain references to products that are not available in your country. Please contact us to check the availability of these products in your country.

The content of this publication shall not be reproduced, altered or sold for any commercial purpose without the written approval of Shimadzu.

Company names, products/service names and logos used in this publication are trademarks and trade names of Shimadzu Corporation, its subsidiaries or its affiliates, whether or not they are used with trademark symbol "TM" or "®". Third-party trademarks and trade names may be used in this publication to refer to either the entities or their products/services, whether or not they are used with trademark symbol "TM" or "®".

Shimadzu disclaims any proprietary interest in trademarks and trade names other than its own.

The information contained herein is provided to you "as is" without warranty of any kind including without limitation warranties as to its accuracy or completeness. Shimadzu does not assume any responsibility or liability for any damage, whether direct or indirect, relating to the use of this publication. This publication is based upon the information available to Shimadzu on or before the date of publication, and subject to change without notice.