

**CoreFocus**  
**Report**  
**No. 517**

GC

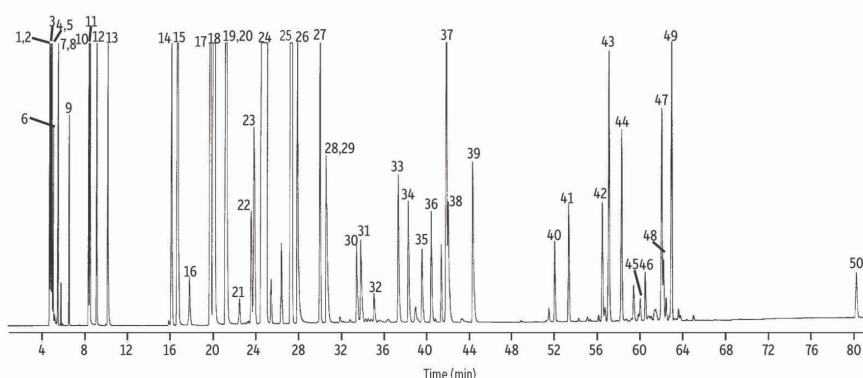
FID

SH Series

**SH-1**

**Analysis of Flavor volatiles**

**Keywords: Aroma ingredients, Fragrances**



1. Methanol	11. Ethylbutyrate	21 $\alpha$ -Phellandrene	31 <i>trans</i> -Limonene monoxide	41. Geranyl acetate
2. Acetaldehyde	12. Furfural	22 $\alpha$ -Terpinene	32 Citronellal	42. $\alpha$ -Ionone
3. Ethanol	13. <i>trans</i> -2-Hexenal	23 p-Cymene	33 Terpinene-4-ol	43. $\beta$ -Caryophyllene
4. Acetone	14. $\alpha$ -Thujene	24 $\delta$ -Limonene	34 $\alpha$ -Terpineol	44. <i>trans</i> - $\alpha$ -Bergamotene
5. Isopropyl alcohol	15. $\alpha$ -Pinene	25 $\gamma$ -Terpinene	35 Decanal	45. BHA
6. Methylene chloride	16. Camphene	26 Octanol	36 d & l Carveol	46. $\beta$ -Ionone
7. Hexane	17. Sabinene	27 Terpinolene	37 Neral	47. Valencene
8. Ethyl acetate	18. $\beta$ -Pinene	28 Nonanal	38 Carvone	48. $\gamma$ -Elemene
9. Ethyl propionate	19. Octanal	29 Linalool	39 Geranial	49. $\beta$ -Bisabolene
10. <i>n</i> -Hexanal	20. Myrcene	30 <i>cis</i> -Limonene monoxide	40. Neryl acetate	50. Nootketone

Instrument	: GC
Column	: SH-1 (60 m x 0.53 mm I.D., df = 0.50 $\mu$ m) , P/N : 227-36106-01
Column temp.	: 70°C (15 min) - 2°C/min - 190°C (5 min)
Inj. vol.	: 0.8 $\mu$ L split
Inj. temp.	: 220 °C
Split ratio	: 1:20
Carrier gas	: He, 20 cm/s linear velocity at 70 °C
Detector	: FID
Detector temp.	: 260 °C

CoreFocus is a trademark of Shimadzu Corporation or its affiliated companies in Japan and/or other countries.

**Shimadzu Corporation**  
**www.shimadzu.com/an/**

**For Research Use Only. Not for use in diagnostic procedures.**

This publication may contain references to products that are not available in your country. Please contact us to check the availability of these products in your country.

The content of this publication shall not be reproduced, altered or sold for any commercial purpose without the written approval of Shimadzu.

Company names, products/service names and logos used in this publication are trademarks and trade names of Shimadzu Corporation, its subsidiaries or its affiliates, whether or not they are used with trademark symbol "TM" or "®". Third-party trademarks and trade names may be used in this publication to refer to either the entities or their products/services, whether or not they are used with trademark symbol "TM" or "®".

Shimadzu disclaims any proprietary interest in trademarks and trade names other than its own.

The information contained herein is provided to you "as is" without warranty of any kind including without limitation warranties as to its accuracy or completeness. Shimadzu does not assume any responsibility or liability for any damage, whether direct or indirect, relating to the use of this publication. This publication is based upon the information available to Shimadzu on or before the date of publication, and subject to change without notice.