

TheReporter

Reprinted from Volume 15, No. 2, 1996

T296022

© 1999 Sigma-Aldrich Co.

For more information, or current prices, contact your nearest Supelco subsidiary listed below. To obtain further contact information, visit our website (www.sigma-aldrich.com), see the Supelco catalog, or contact Supelco, Bellefonte, PA 16823-0048 USA.

ARGENTINA • Sigma-Aldrich de Argentina, S.A. • Av. Pueyrredon 2446/50 • Piso 5-B • Buenos Aires 1119
AUSTRALIA • Sigma-Aldrich Pty. Ltd. • Unit #2, 14 Anella Avenue • Castle Hill NSW 2154
AUSTRIA • Sigma-Aldrich Handels GmbH • Hebbelplatz 7 • A-1110 Wien
BELGIUM • Sigma-Aldrich N.V./S.A. • K. Cardijnplein 8 • B-2880 Bornem
BRAZIL • Sigma-Aldrich Quimica Brasil Ltda. • Rua Sabara, 566-Conj. 53 • 01239-010 São Paulo, SP
CANADA • Sigma-Aldrich Canada, Ltd. • 2149 Winston Park Dr., Oakville, ON L6H 6J8
CZECH REPUBLIC • Sigma-Aldrich s.r.o. • Pobrezni 46 • 186 21 Praha 8
DENMARK • Sigma-Aldrich Denmark A/S • Vejlegaardsvej 65B • DK-2665 Vallengbaek Strand
FINLAND • Sigma-Aldrich Finland/YA-Kemia Oy • Teerisuonkuja 4 • FIN-00700 Helsinki
FRANCE • Sigma-Aldrich Chimie • Chromatographie Supelco • L'Isle d'Abeau Chesnes - B.P. 701 • 38297 Saint-Quentin Fallavier Cedex
GERMANY • Sigma-Aldrich Chemie GmbH • Geschäftsbereich Supelco • Grünwalder Weg 30 • D-82041 Deisenhofen
GREECE • Sigma-Aldrich (o.m.) Ltd. • 72 Argonafton Str. • 16346 Ilioupoli, Athens
HUNGARY • Sigma-Aldrich Kft. • Nagy Diófa u. 7., IV fl. • H-1067 Budapest
INDIA • Sigma-Aldrich Co. • Survey No. 31/1, Sitharamapalaya • Mahadevapura P.O. • Bangalore 560 048
IRELAND • Sigma-Aldrich Ireland Ltd. • Airton Road • Tallaght • Dublin 24
ISRAEL • Sigma Israel Chemicals Ltd. • Park Rabin • Rohovot 76100
ITALY • Sigma-Aldrich s.r.l. • Via Gallarate, 154 • 20151 Milano
JAPAN • Sigma-Aldrich Japan K.K. • Division Supelco • JL Nihonbashi Building • 1-10-15 Nihonbashi Horidome-cho, Chuo-ku • Tokyo 103
KOREA • Sigma-Aldrich Korea • Samhan Camus Annex, 10th Floor • 17-26 Yoido-dong, Yungdeungpo-ku • Seoul
MALAYSIA • Sigma-Aldrich (M) Sdn. Bhd. • 9-2, Jalan 2/128, Taman Gembira • Off Jalan Kuchai Lama • 58200 Kuala Lumpur • Selangor
MEXICO • Sigma-Aldrich Quimica S.A. de C.V. • Calle 6 North No. 107 • Parque Industrial Toluca 2000 • 50200 Toluca
NETHERLANDS • Sigma-Aldrich Chemie BV • Postbus 27 • 3330 AA Zwijndrecht
NORWAY • Sigma-Aldrich Norway • Sandakerveien 102 • N-0483 Oslo
POLAND • Sigma-Aldrich Sp. z o.o. • Szelagowska 30 • 61-626 Poznań
PORTUGAL • Sigma-Aldrich Quimica, S.A. • P.O. Box 131 • Sintra 2710
RUSSIA • Sigma-Aldrich Russia • TOO Techmedbiochem • Makarenko Str. 2/21 • Building 1, Flat 22 • Moscow 103062
SINGAPORE • Sigma-Aldrich Pte. Ltd. • 102E Pasir Panjang Road • #08-01 Citilink Warehouse • Singapore 118529
SOUTH AFRICA • Sigma-Aldrich (pty) Ltd. • CNR Kelly & Ackerman Streets • Southern Life Industrial Park Unit • Unit 16/17 • Jet Park 1459
SPAIN • Sigma-Aldrich Quimica, S.A. • Apt. Correos 161 • 28100 Alcobendas, Madrid
SWEDEN • Sigma-Aldrich Sweden AB • Solkraftsvägen 14C • 135 70 Stockholm
SWITZERLAND • Supelco Switzerland • Industriestrasse 25 • P.O. Box 260 • CH-9471 Buchs
UNITED KINGDOM • Sigma-Aldrich Company Ltd. • Supelco UK • Fancy Road, Poole • Dorset BH12 4QH
UNITED STATES • Supelco • Supelco Park • Bellefonte, PA 16823-0048 • Phone 800-247-6628 or 814-359-3441 • Fax 800-447-3044 or 814-359-3044 • email:supelco@sial.com

H

This article is archived from a past issue of The Supelco Reporter. Information in the article was appropriate at the time of publication, but product specifications, catalog numbers, and availability may have changed over time.

If you have questions about applying methodology described in this article to a current application, please contact our technical service chemists.



Supelco is a member of the Sigma-Aldrich family. Supelco products are sold through Sigma-Aldrich, Inc. Sigma-Aldrich warrants that its products conform to the information contained in this and other Sigma-Aldrich publications. Purchaser must determine the suitability of the product for a particular use. Additional terms and conditions may apply. Please see the reverse side of the invoice or packing slip.

Supel-Q PLOT Columns for Analyzing a Wide Range of Compounds

W. Betz

The Supel-Q PLOT column can separate a wide range of compounds, from subambient to high temperatures. As an alternative to packed columns, this porous layer open tubular column features a unique glue that eliminates bleed and particle loss, and a porous polymer that efficiently separates many compounds.

The use of porous layer open tubular (PLOT) columns for gas chromatographic (GC) separation of volatile, organic compounds has been ongoing during the last three decades. Unlike conventional packed columns, which contain particles in a packed bed, PLOT columns utilize porous solids—such as activated charcoal, porous polymers, molecular sieves and other high surface area particles—that are adhered to the inside wall of a capillary column. These columns provide improved separations, due to narrower column diameters and a reduction in the lateral diffusion encountered in packed beds.

Supelco recently developed a glue[■] that effectively chemically bonds the micron-diameter porous particles to the column wall, thus preventing particle loss during column use. Our Supel-Q™ PLOT column combines the use of this glue with a special porous polymer—a highly porous divinylbenzene polymer (approximately 725m²/gram) that is synthesized in our labs as sub-micron, spherical particles. The broad working range of this porous polymer (max. temp. = 275°C), as well as the functional aspects of the glue technology, provide a unique column to evaluate a wide range of compounds—from volatile sulfur compounds with boiling points below ambient to high molecular weight hydrocarbons.

The preparation of the Supel-Q PLOT columns with strict manufacturing tolerances for the mass of porous polymers adhered to the column wall ensures effective reproducibility within tight tolerances. These tolerances are exemplified with retention time windows as well as peak symmetries for key compounds. The quality assurance data obtained for 60 columns is illustrated in Table 1.

The Supel-Q PLOT column (max. temp.: 250°C) effectively resolves carbon dioxide and C1-C4 hydrocarbons at above ambient temperatures without bleed. Also, it is suitable for analyses of other gases, such as sulfur gases, and alcohols, ketones, aldehydes, and many polar compounds. Gasoline and other petroleum fractions can be analyzed as well.

Table 1. Reproducibility Data for 0.53mm ID Supel-Q Columns

k' (benzene)	standard deviation (n = 60)
6.86	0.47

The analysis of several volatile sulfur compounds illustrates the efficient performance of this PLOT column for hydrogen sulfide (boiling point of -60.2°C) through ethyl mercaptan (boiling point of 36.0°C) or even higher molecular weight sulfur compounds (Figure A).

An analysis of trace levels of water in fuels is illustrated in Figure B. The ability to quickly temperature-program the column assists in providing rapid analysis of this wide range of molecular size analytes. Permanent gas impurities can be evaluated using this same approach (Figure C).

The analyses of polar compounds, such as C3-C5 alcohols, is readily accomplished using the Supel-Q column, as illustrated in

Figure A. Light Sulfur Gases

Column: **Supel-Q PLOT**, 30m x 0.53mm ID
 Cat. No.: **25462**
 Oven Temp.: 50°C (1 min) to 250°C at 10°C/min, hold 10 min
 Carrier: helium, 3mL/min
 Det.: FPD, 260°C
 Inj.: 25µL (approx. 16% each analyte), direct injection, 230°C

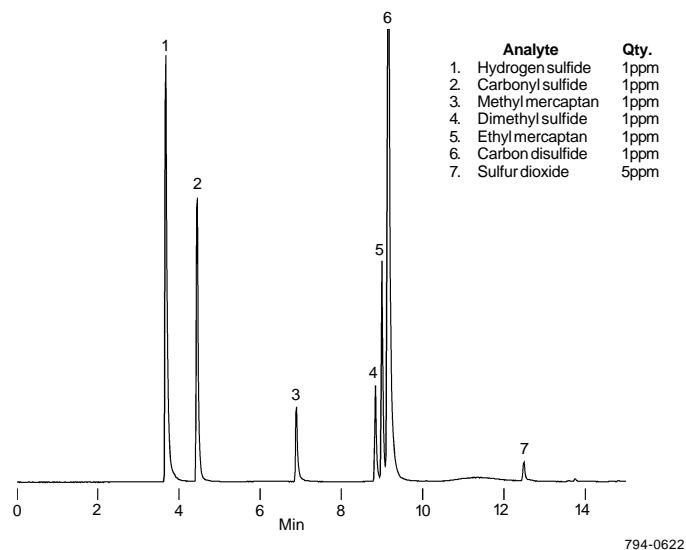


Figure D. Other polar organic compounds such as ketones and aldehydes also can be analyzed using Supel-Q PLOT columns.

Relative to packed columns, the Supel-Q PLOT column offers better resolution in less time and a higher level of reproducibility. It can separate a large assortment of compounds, and can be fitted to packed and capillary column chromatographs.

■ Patent pending.

Figure B. Water in Gasoline

Column: **Supel-Q PLOT**, 30m x 0.53mm ID
 Cat. No.: **25462**
 Oven Temp.: 35°C (3 min) to 250°C at 16°C/min
 Carrier: helium, 3mL/min
 Det.: TCD, 260°C
 Inj.: 0.4µL gasoline, direct injection, 230°C

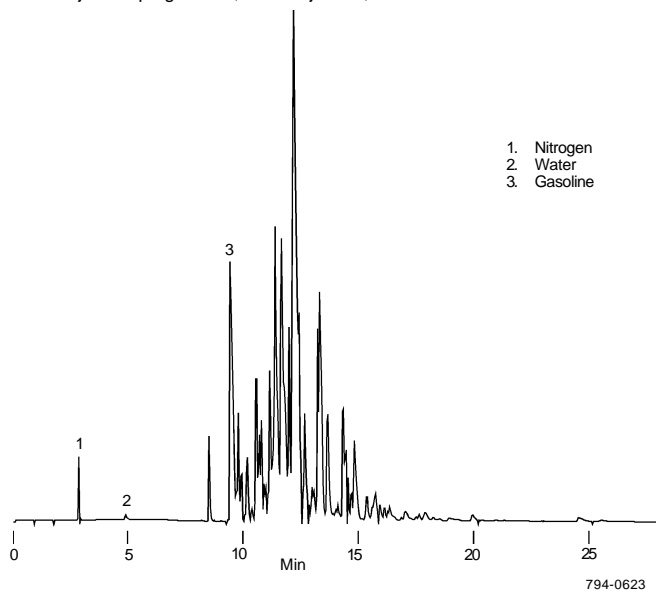


Figure D. Alcohols

Column: **Supel-Q PLOT**, 30m x 0.53mm ID
 Cat. No.: **25462**
 Oven Temp.: 35°C (3 min) to 250°C at 16°C/min
 Carrier: helium, 3mL/min
 Det.: FID, 250°C
 Inj.: 0.1µL (approx. 16% each analyte), direct injection, 230°C

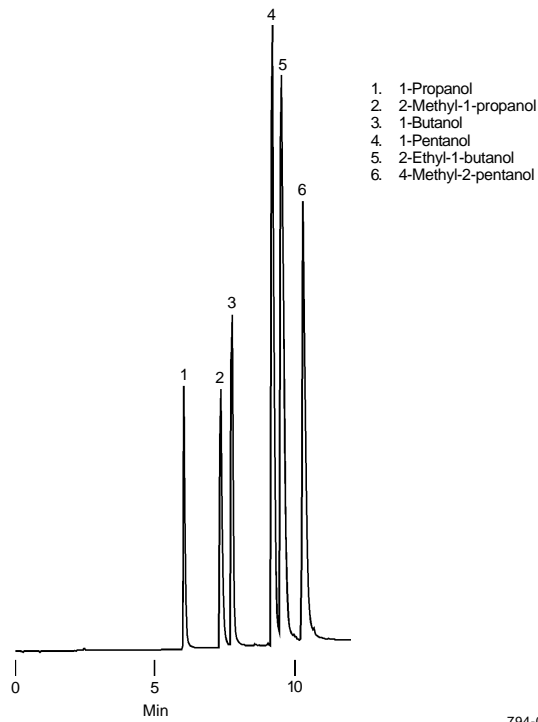
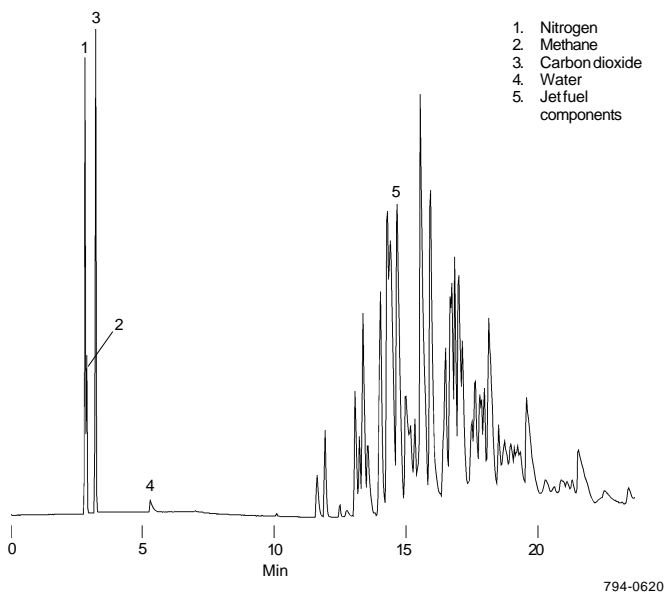


Figure C. Small Molecules in Jet Fuel

Column: **Supel-Q PLOT**, 30m x 0.53mm ID
 Cat. No.: **25462**
 Oven Temp.: 35°C (3 min) to 250°C at 16°C/min
 Carrier: helium, 3mL/min
 Det.: TCD, 250°C
 Inj.: 0.6µL JP4 jet fuel, direct injection, 230°C



Ordering Information:

Description	Cat. No.
Supel-Q PLOT Columns	
30m x 0.32mm ID	24242
30m x 0.53mm ID	25462

Supel-Q is a trademark of Sigma-Aldrich Co.

