

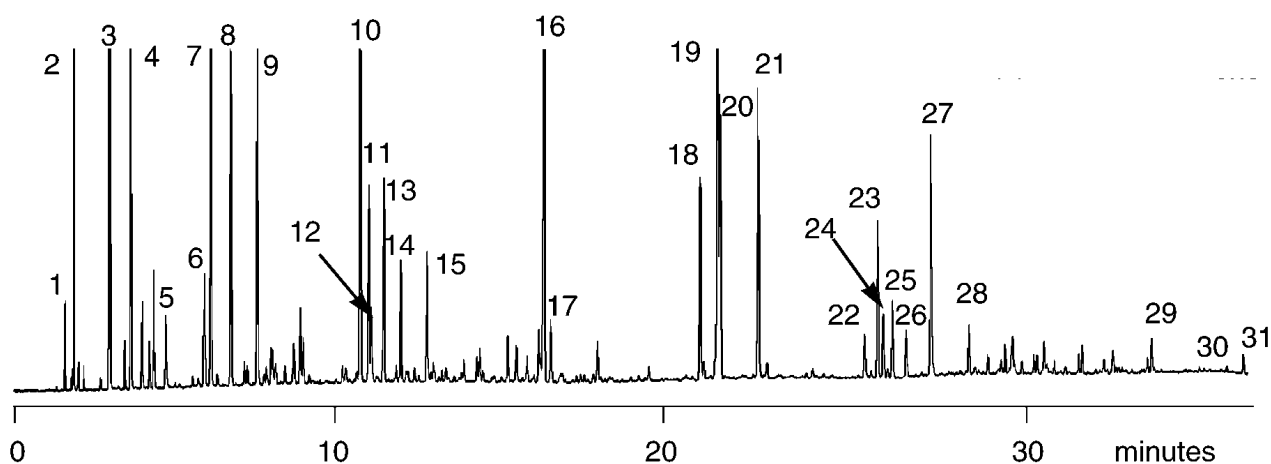
## Analysis of leaded petrol

**BPX5**

Column part number	054101		
Phase	BPX5	Final temperature	150°C
Column	30 m x 0.25 mm x 0.25 µm	Detector	FID
Initial temperature	-20°C, 1 min	Injection mode	Split
Rate 1	4°C/min to 40°C	Carrier gas	H <sub>2</sub> , 10 psi
Rate 2	8°C/min to 150°C		

**Components**

- |                       |                            |                             |                             |
|-----------------------|----------------------------|-----------------------------|-----------------------------|
| 1. iso-Butane         | 9. n-Hexane                | 17. 2,3-Dimethylhexane      | 25. 1,3,5- Trimethylbenzene |
| 2. n-Butane           | 10. Benzene                | 18. Ethylbenzene            | 26. 1-Methyl-2-ethylbenzene |
| 3. iso-Pentane        | 11. 2-Methylhexane         | 19. m-Xylene                | 27. 1,2,4- Trimethylbenzene |
| 4. n-Pentane          | 12. 2,3 Dimethylpentane    | 20. p-Xylene                | 28. 1,2,3-Trimethylbenzene  |
| 5. 2,2-Dimethylbutane | 13. 3-Methylhexane         | 21. o-Xylene                | 29. Naphthalene             |
| 6. 2,3-Dimethylbutane | 14. 2,2,4-Trimethylpentane | 22. n-Propylbenzene         | 30. 2-Methylnaphthalene     |
| 7. 2-Methylpentane    | 15. n-Heptane              | 23. 1-Methyl-3-ethylbenzene | 31. 1-Methylnaphthalene     |
| 8. 3-Methylpentane    | 16. Toluene                | 24. 1-Methyl-4-ethylbenzene |                             |



For more information visit [www.trajanscimed.com](http://www.trajanscimed.com) or contact [techsupport@trajanscimed.com](mailto:techsupport@trajanscimed.com)