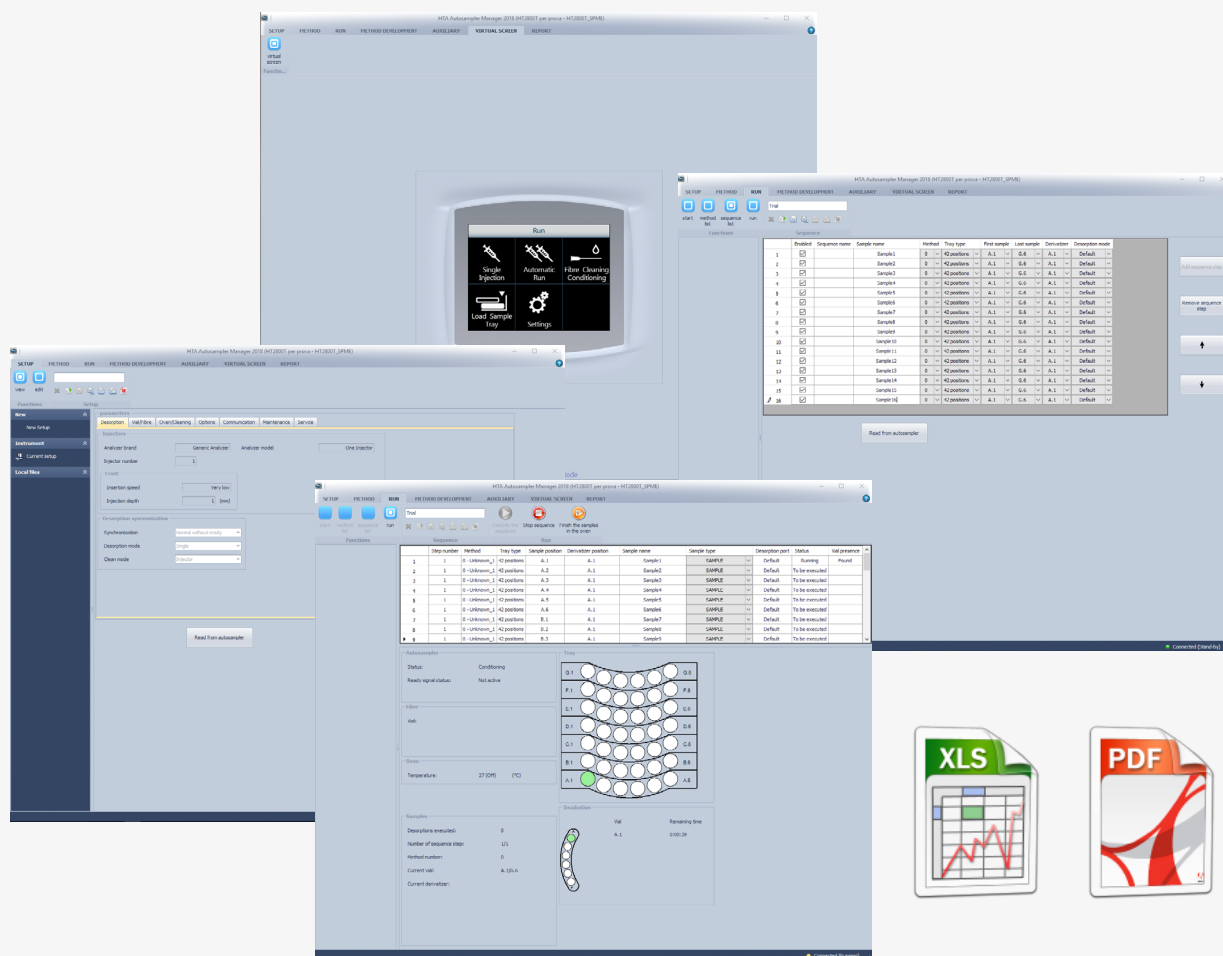




HTA AUTOSAMPLER MANAGER

AUTOSAMPLER PC SOFTWARE



Designed to control several HTA instruments by a single interface, **HTA Autosampler Manager** is the software dedicated to manage HTA autosamplers.

The software allows to perform almost all operative tasks that are available from autosampler touch screen or keypad such as creation and editing of the instrument methods, sample list generation, sample run.

In addition it offers premium functionalities not elsewhere available:

EXECUTION REPORT

By automatic creation of PDF, CSV or XLS(X) files for easier integration in LIMS, ELN, MRP or corporate database. Files are stored locally or copied to a remote space.

METHOD & SEQUENCE NAMING

Add name and description information to method and sequence step for easier handling.

BACKUP, RESTORE & PRINT

Allows to backup method, sequence and setup data for additional security and to restore them on critical events. Furthermore you are entitled to print relevant information in order to archive or share hard copies.

REMOTE CONTROL

When coupled with LAN connectivity enables remote control from any PC of the network by screen mirroring (available for instruments equipped with both touch screen and keypad).

CFR 21 PART 11 AND SAMPLE TRACEABILITY

HTA Autosampler Manager can run in standard mode ("Standard Version") or CFR 21 Part 11 compliant ("CFR 21 Part 11 Version"). In the latter case, **multiple user profile, electronic signature and additional traceability tools** are provided.

The **multiple level log files** ensure traceability, software integrity and easy trouble-shooting as per best industry practices regardless the version you are using.

For labs running with barcodes we offer several options: **manual barcode readers** (i.e. barcode gun) and **integrated barcode readers** (when available) are also supported.

MULTILINGUAL

While default language is English, additional languages are available, such as **Spanish, Italian, Russian** and few more. Check with your sale representative about.

ADVANCED FEATURES

A dedicated panel for **method development** is available for headspace and SPME autosamplers: progressive tests can be implemented in a very convenient way.

Vial leakage check information are processed and recorded within the sample report for a quick visualization.

Prep Ahead. You can instruct the autosampler to start sample preparation before the analysis of the previous sample has been completed. In such way you can reduce as low as few tens of seconds the delay time between two consecutive injections.

Online version checker checks instantly for newer versions, allowing instantaneous download for free.

EASY TO OPERATE

The software is characterized by a **user friendly interface**. The user is **assisted step by step** up to task accomplishment. No complex macro programming is required.

Online help is also available to provide the additional information that may be needed.

60 days software trial is always provided with the purchase of a new autosampler, in order to allow you a complete software evaluation before your final purchase decision.

CHROMATOGRAPHY DATA SYSTEM INTEGRATION

HTA Autosampler Manager may be run stand-alone or alongside any other software such as Chromatography Data Systems and integration packages. In addition it allows for **advanced integration with several Chromatography Data Systems** including *Agilent (OpenLAB CDS - EzChrom Edition, EzChrom Elite), PerkinElmer (TotalChrom), Shimadzu (GCsolution, GCMSsolution, LabSolutions LC/GC, LabSolutions LCMS, LCsolution, LCMSsolution) and Thermo (Chromquest)*. Check online the detailed compatibility information between instruments and CDS.



TECHNICAL SPECIFICATIONS

SOFTWARE:

- Microsoft® Windows XP®, Windows Vista®, Windows 7®, Windows 8®, Windows 10® PC Edition only (excluding mobile devices and appliances).
- Account w/administrator rights
- Additional required software: Microsoft .NET Framework 3.5.

HARDWARE:

- RAM: 1GB
- Disk space (for installation): 100MB
- CD-ROM drive
- RS232/USB/LAN (Router) port(s) as may be required from your instrument
- Internet connection (only for online functionalities: such as online activation and software update)

PC are expected to run Windows OS with the latest update installed (unless differently specified). Software is tested under English Operative System (ISO/IEC 8859-Part 1 "Latin-1 Western European"), 32-bit (for Windows 7 or lower) and 64-bit (Windows 8 or higher) versions.

Only subset of functionalities displayed in this brochure could be available, depending on the supported instruments. CFR 21 Part 11 version may be sold for extra fee, depending on the instrument model.

The TRIAL LICENCES may be installed one time, only on one PC. The FULL LICENCES may be installed on multiple PCs. The CFR21 Part 11 LICENCES may be installed only on one PC.

In order to use the advanced integration with CDS, the software should be installed on the same PC. In all other cases it is not required to have HTA Autosampler Manager and CDS on the same PC.

All trademarks are property of their respective owners.

HTA s.r.l.

via del mella, 77-79 - 25131 Brescia - ITALY
T: +39 030 3582920 - F: +39 030 3582930
www.hta-it.com | info@hta-it.com



Distributed by: