

Agilent G4367A Auxiliary Electronic Pressure Control (Aux EPC) Module For the Agilent 5975T LTM-GC/MS system

Installation Guide

Parts Supplied

Table 1 Parts supplied

Description	Quantity
Aux EPC module	1
EPC holder	1
Bulkhead assembly	1
EPC cover (for new design)	1
Screw M4x10	2
Screw M4x6 (for new design)	1
Retainer B (for old design)	1
Retainer (for new design)	1
Captive Screw M4x0.7x12MM (for old design)	1
Tie	3
Label (only for old design)	1

Parts Identification

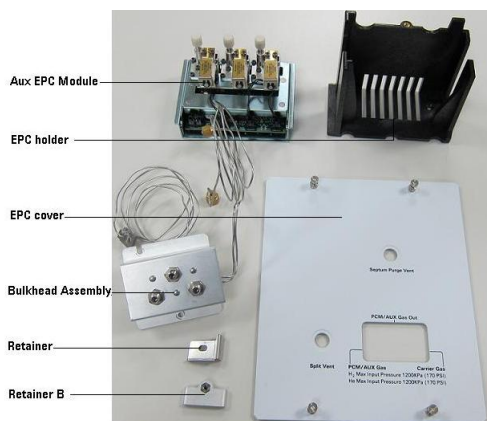


Figure 1 Aux EPC module parts identification

Tools Required

- T-10 and T-20 Torx drivers
- Wrench open-end, 7/16-inch and 1/2-inch (8710-0806)

Installation Procedure

This procedure explains how to install the auxiliary pressure control (Aux EPC) module accessory on the Agilent 5975T LTM GC/MSD. This accessory can be used to add one electronically-controlled gas streams to the GC.

WARNING

Refer to the Safety Manual that came with your Agilent 5975T LTM-GC/MSD for hazards that may exist when maintaining your instrument.

Prepare the GC

1. Vent the instrument. (Refer to G4360-90007 Agilent 5975T LTM-GC/MSD Operational Manual for venting the MSD.)
2. Turn off the GC and unplug the power cord.
3. Remove the Analyzer Top Cover (See Figure 2)
 - a. Open the Local Control Panel (LCP)/Analyzer window.

- b. Loosen the two captive screws on the front bottom left and top right corners of the cover, inside the LCP opening.
- c. Slide the cover forward until it is free of the mainframe, and lift it off the instrument.



Figure 2 Removing the Analyzer Top Cover

4. Open the LTM/Guard Column Enclosure Door
 - a. Push on the latch under the bottom left corner of the door to the LTM/guard column enclosure and open the door.
5. Remove the Small Top Cover.
6. Remove the Main Cover
 - a. Remove 4 screws from the GC side. (See Figure 3)
 - b. Loosen 3 screws in blue circles from MSD side. No need to remove them.
 - c. Remove 3 screws in red circles. (See Figure 4)
 - d. Loosen the screw on the back side. (See Figure 5)
 - e. Remove the Main Cover.



Figure 3 Removing 4 screws from GC side

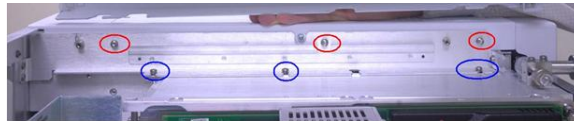


Figure 4 Loosing 3 screws and remove 3 screws

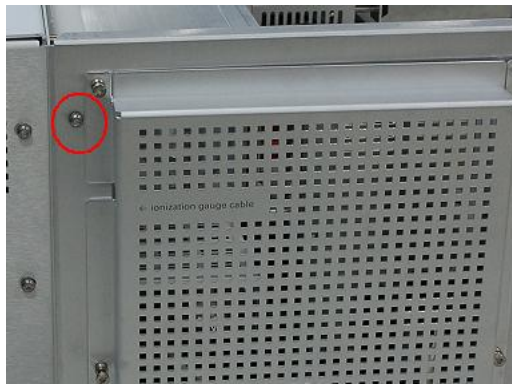


Figure 5 Loosing the screw on the back side

7. Remove the Fan (See Figure 6)

- a. Remove the two screws in the red circles from the fan
- b. Disconnect the fan power cable.



Figure 6 Removing the fan

8. Remove the Bulkhead Assembly (See Figure 7)
 - a. Loosen the cap in the blue circle.
 - b. Remove two screws in the red circles.

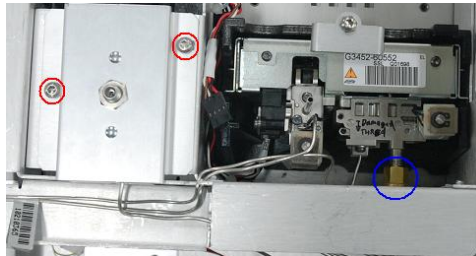


Figure 7 Removing the Bulkhead assembly

Assemble the Aux EPC

1. Install the Aux EPC holder (See Figure 8)
 - a. Put the EPC holder at the empty location.
 - b. Tighten two screws (M4x10) in the red circles.

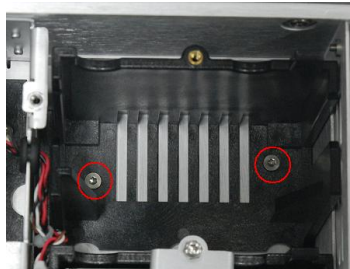


Figure 8 Installing the Aux EPC holder

2. Install the Aux EPC (See Figure 9)
 - a. Connect the communication cable.
 - b. Slide the Aux EPC module into the EPC holder.
Arrange the cable to prevent it from being pinched by the Aux EPC.
 - c. Attach the EPC module bracket by tightening the screw (M4x6).



Figure 9 Installing the Aux EPC

3. Install the Bulkhead assembly (See Figure 10)
 - a. Tighten two screws in the red circles.
 - b. Connect the nuts in the blue circles. Make sure the Inlet In tubing connects to the Inlet EPC and the Aux In tubing connects to the Aux EPC Channel 1.

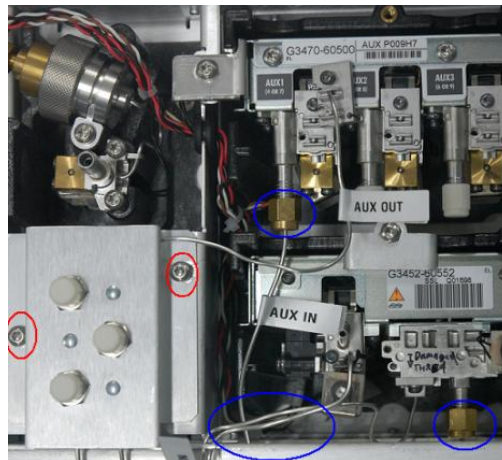


Figure 11 Installing the Bulkhead assembly

4. Attach the tubing block to the manifold (See Figure 11)
 - a. Remove the tubing connector blank from Aux EPC Channel 1.
 - b. Attach the tubing block to manifold and tighten two screws.



Figure 11 Attaching the tubing block

5. Attach the tubing by the provided ties(See Figure 12)



Figure 12 Attaching the tubing

Restore the GC to operating condition

1. Replace all instrument covers in the reverse order in which they were removed.
2. Install the provided EPC Cover.
3. Plug in the GC and turn on the power. (Refer to G4360-90007 Agilent 5975T LTM-GC/MSD Operational Manual for turning on the GC/MSD.)
4. Connect the source gas lines to the Bulkhead assembly.
5. Turn on gas pressure and leak check all fittings.
6. On your PC, update your 5975T LTM-GC/MSD firmware to the latest version.
7. Click the provided APC Setup.exe in your CD to install Agilent 5975T LTM GC/MSD Aux EPC Setup Tool.

8. Input IP address and then click install to configure the Aux EPC. And click remove can uninstall the Aux EPC from the instrument. (See Figure 13)

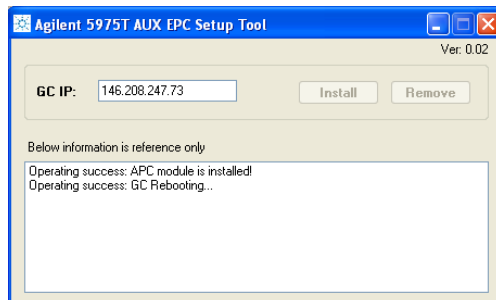


Figure 13 Install/remove the Aux EPC

9. Select the Aux EPC gas type on Agilent MSD Chemstation > Edit GC Parameters > Configuration > Modules. (See Figure 14)

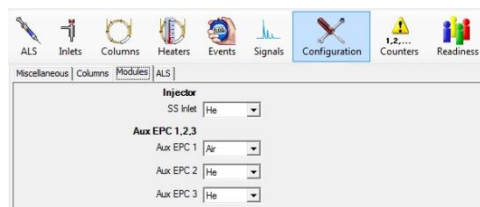


Figure 14 Selecting the Aux EPC gas type

10. Set the gas flow on Edit GC Parameters > Columns > Show All Flows > Aux EPC 1. (See Figure 15/16)

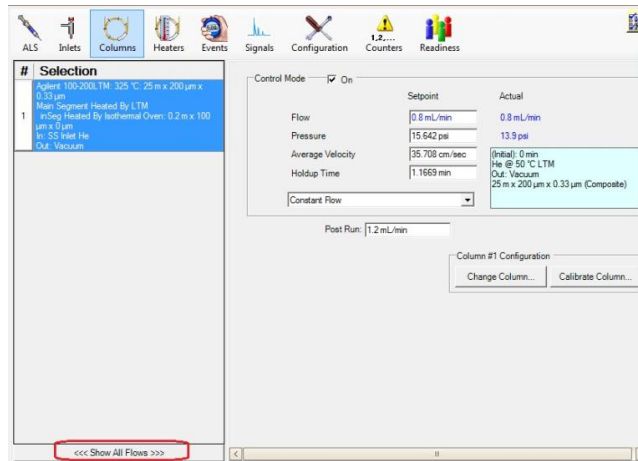


Figure 15 Showing the Aux EPC Control Mode

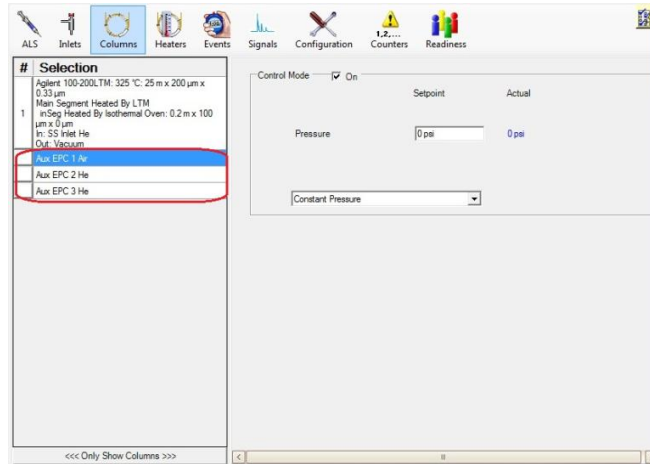


Figure 16 Setting the Aux EPC gas pressure

Consumables and Replacement Parts

See table 2 for Aux EPC commonly-used consumable and replacement parts.

Table 2 Consumable and Replacement Parts

Consumable and Replacement Parts	Part Number
Inlet bulkhead fitting	G4367-20020
Inlet bulkhead	G2630-80540
AUX block weldment Assy	G3430-60550
Nut Hex	2950-0203
EPC cover(Small Top GC Cover) For New designed 75T	G4360-00765
EPC cover (AUX EPC version) For New designed 75T	G4367-00020

Warranty

The material contained in this document is provided “as is,” and is subject to being changed, without notice, in future editions. Further, to the maximum extent permitted by applicable law, Agilent disclaims all warranties, either express or implied, with regard to this manual and any information contained herein, including but not limited to the implied warranties of merchantability and fitness for a particular purpose. Agilent shall not be liable for errors or for incidental or consequential damages in connection with the furnishing, use, or performance of this document or of any information contained herein. Should Agilent and the user have a separate written agreement with warranty terms covering the material in this document that conflict with these terms, the warranty terms in the separate agreement shall control.

© Agilent Technologies, Inc. 2001

Printed in China

First edition, September 2011

安捷伦科技（上海）有限公司

上海市浦东新区外高桥保税区

英伦路 412 路

联系电话：（800）820 3278