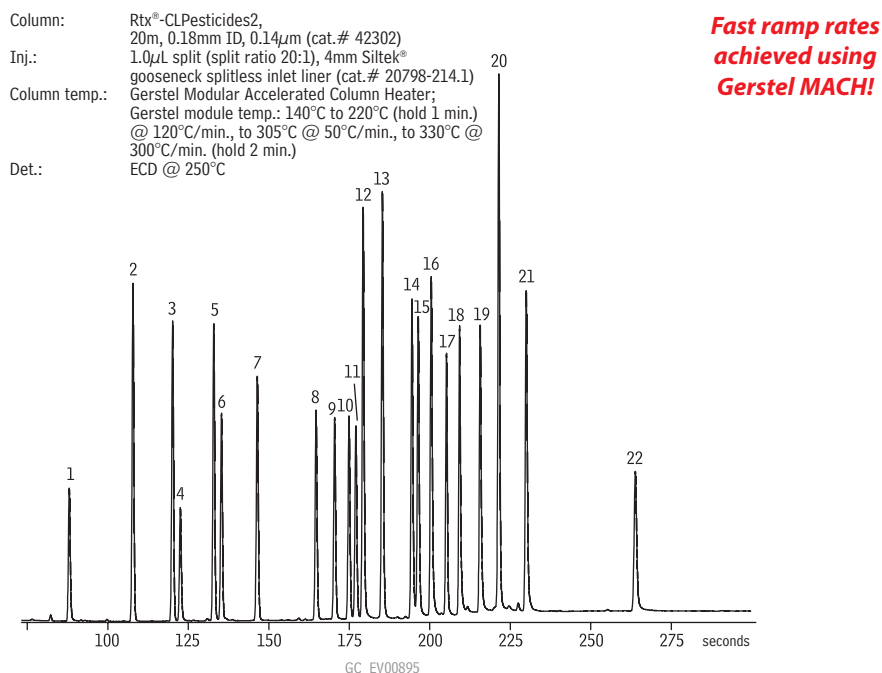
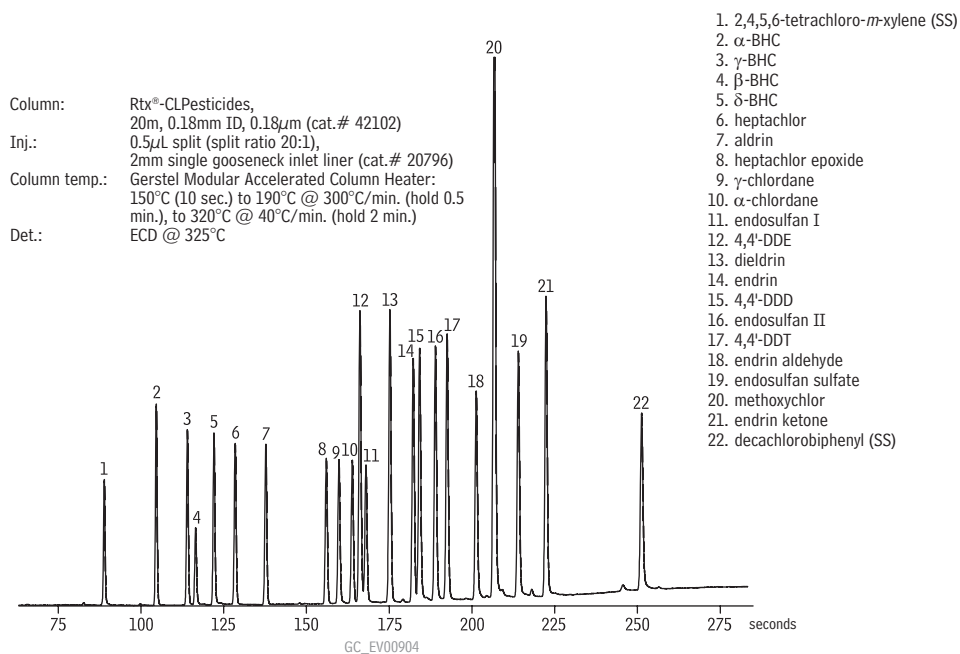


**Organochlorine Pesticides  
US EPA Method 8081  
Rtx®-CLPesticides & Rtx®-CLPesticides2**



Sample: Organochlorine Pesticide Mix AB #2 (8-80µg/mL each component  
in hexane/toluene 1:1, cat.# 32292),  
Pesticide Surrogate Mix (200µg/mL each component in acetone, cat.# 32000)  
Inj.: 0.5µL split (split ratio 20:1), 2mm single gooseneck inlet liner (cat.# 20796)  
Inj. temp.: 250°C  
Carrier gas: helium, constant flow  
Flow rate: 1.5mL/min.  
Oven temp.: 275°C