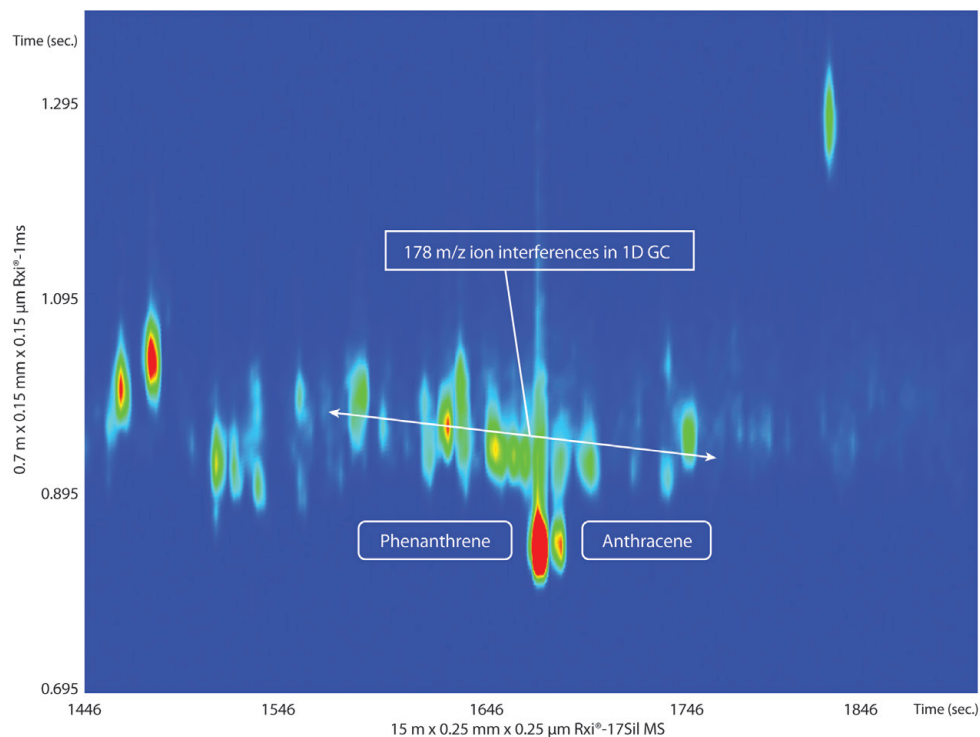


# Stir Bar Sorptive Extraction Cleaned Up Sample - QuEChERS Extract of NIST SRM Mussel(Rxi®-17Sil MS and Rxi®-1ms, m/z 178)

Peaks	RT 1 (sec.)	RT 2 (sec.)
1. Phenanthrene	1677	0.75
2. Anthracene	1689	0.75



GC\_EV1232

**Column** Rxi®-17Sil MS 15 m, 0.25 mm ID, 0.25 µm (cat.# 14120)  
Rxi®-1ms 0.7 m, 0.15 mm ID, 0.15 µm (cat.# 43800)

**Sample** Methylene chloride

**Diluent:** Methylene chloride

**Injection** 1 µL splitless (hold 1 min.)

**Inj. Vol.:** Premium 4 mm single taper w/wool (cat.# 23303.1)

**Liner:** 250 °C

**Inj. Temp.:** 40 mL/min.

**Purge Flow:** 40 mL/min.

**Oven** Rxi®-17Sil MS: 40 °C (hold 1 min.) to 320 °C at 5 °C/min. (hold 3 min.)  
Rxi®-1ms: 45 °C (hold 1 min.) to 325 °C at 5 °C/min. (hold 3 min.)  
He, corrected constant flow (2.2 mL/min.)

**Oven Temp:** 20 °C

**Carrier Gas** Modulation

**Modulator Temp. Offset:** 20 °C

**Second Dimension** Separation Time: 3 sec.  
Hot Pulse Time: 0.9 sec.  
Cool Time between Stages: 0.6 sec.

**Detector** TOFMS

**Transfer Line Temp.:** 290 °C

**Analyzer Type:** TOF

**Source Temp.:** 225 °C

**Electron Energy:** 70 eV

**Mass Defect:** 0 mu/100 u

**Solvent Delay Time:** 4 min.

**Tune Type:** PFTBA

**Ionization Mode:** EI

**Acquisition Range:** 45-550 amu

**Spectral Acquisition Rate:** 200 spectra/sec

**Instrument Notes** LECO Pegasus 4D GCxGC-TOFMS  
Rxi®-1ms (cat.# 43800) is a 10 m column. A 0.7 m section was used here as a second dimension column.  
Ed Pfannkoch and Jackie Whitecavage of Gerstel Inc. USA for providing the mussel extract for GCxGC analysis.

**Acknowledgement**