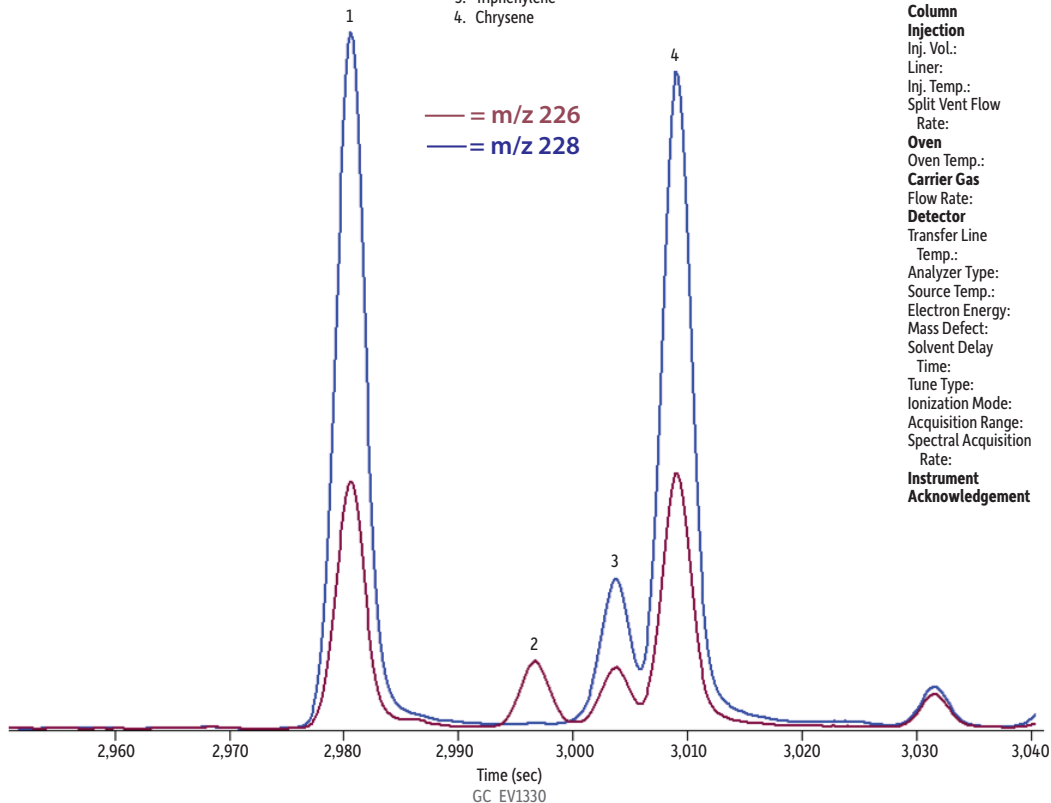


PAHs in Sediment Extract on Rxi®-PAH (Sampled From Spring Creek, PA)

Peaks

1. Benz[a]anthracene
2. Cyclopenta[cd]pyrene
3. Triphenylene
4. Chrysene



Column Injection

Inj. Vol.: 1 µL split (split ratio 10:1)
Liner: Premium 4 mm Precision® liner w/wool (cat.# 23305.5)
Inj. Temp.: 300 °C

Split Vent Flow Rate: 20 mL/min

Oven

Oven Temp.: 80 °C (hold 1 min) to 350 °C at 3.7 °C/min (hold 21 min)

Carrier Gas He, constant flow

Flow Rate: 2 mL/min

Detector TOFMS

Transfer Line

Temp.: 320 °C

Analyzer Type: TOF

Source Temp.: 300 °C

Electron Energy: 70 eV

Mass Defect: 0 mu/100 u

Solvent Delay

Time: 6 min

Tune Type: PFTBA

Ionization Mode: EI

Acquisition Range: 45-550 amu

Spectral Acquisition

Rate: 5 spectra/sec

Instrument LECO Pegasus 4D GCxGC-TOFMS

Acknowledgement Frank Dorman and Melinda Pham of The Pennsylvania State University for providing the sediment extract.

Restek Corporation 110 Benner Circle Bellefonte, PA 16823

1-814-353-1300 • 1-800-356-1688 • Fax: 1-814-353-1309 • www.restek.com