

PAHs in Sediment Extract on Rxi®-PAH (Sampled From Spring Creek, PA)

Peaks

1. Benzo[b]fluoranthene
2. Benzo[k]fluoranthene
3. Benzo[j]fluoranthene
4. Benzo[a]fluoranthene
5. Benzo[e]pyrene
6. Benzo[a]pyrene
7. Perylene

Column Injection

Rxi®-PAH, 60 m, 0.25 mm ID, 0.10 µm (cat.# 49317)
Inj. Vol.: 1 µL split (split ratio 10:1)
Liner: Premium 4 mm Precision® liner w/wool (cat.# 23305.5)
Inj. Temp.: 300 °C

Split Vent Flow

Rate: 20 mL/min

Oven

Oven Temp.: 80 °C (hold 1 min) to 350 °C at 3.7 °C/min (hold 21 min)

Carrier Gas

He, constant flow

Flow Rate:

2 mL/min

Detector

TOFMS

Transfer Line

Temp.: 320 °C

Analyzer Type:

TOF

Source Temp.:

300 °C

Electron Energy:

70 eV

Mass Defect:

0 mu/100 u

Solvent Delay

Time: 6 min

Tune Type:

PFTBA

Ionization Mode:

EI

Acquisition Range:

45-550 amu

Spectral Acquisition

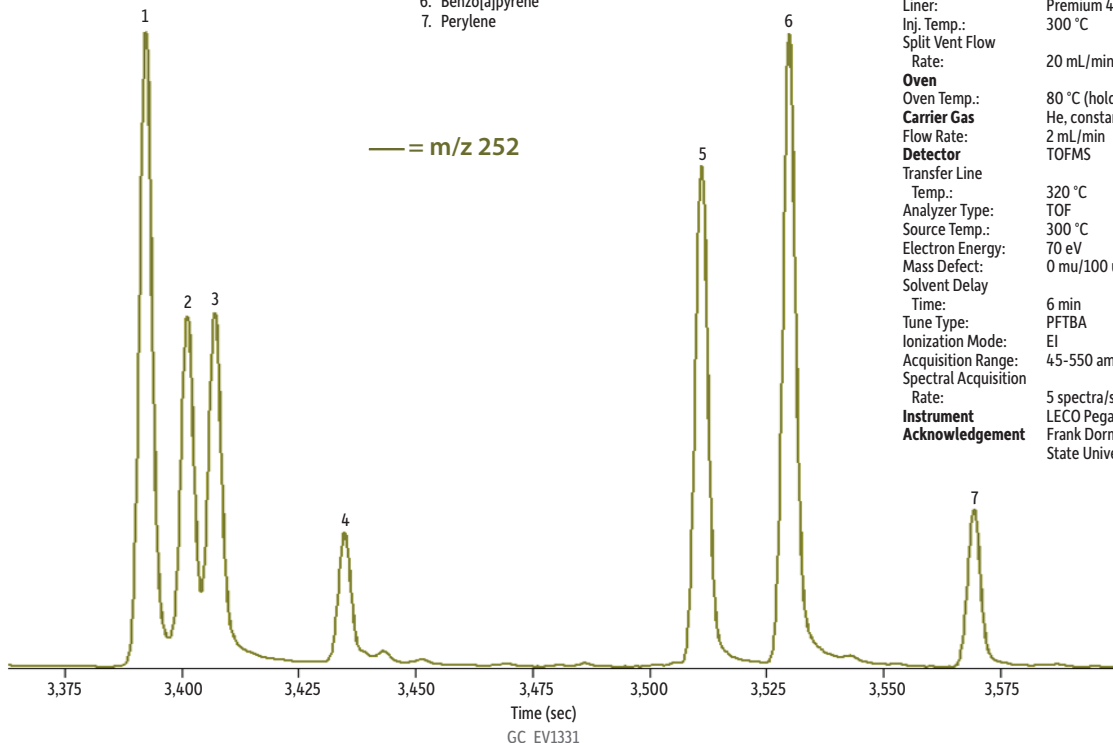
Rate: 5 spectra/sec

Instrument

LECO Pegasus 4D GCxGC-TOFMS

Acknowledgement

Frank Dorman and Melinda Pham of The Pennsylvania State University for providing the sediment extract.



Restek Corporation 110 Benner Circle Bellefonte, PA 16823

1-814-353-1300 • 1-800-356-1688 • Fax: 1-814-353-1309 • www.restek.com