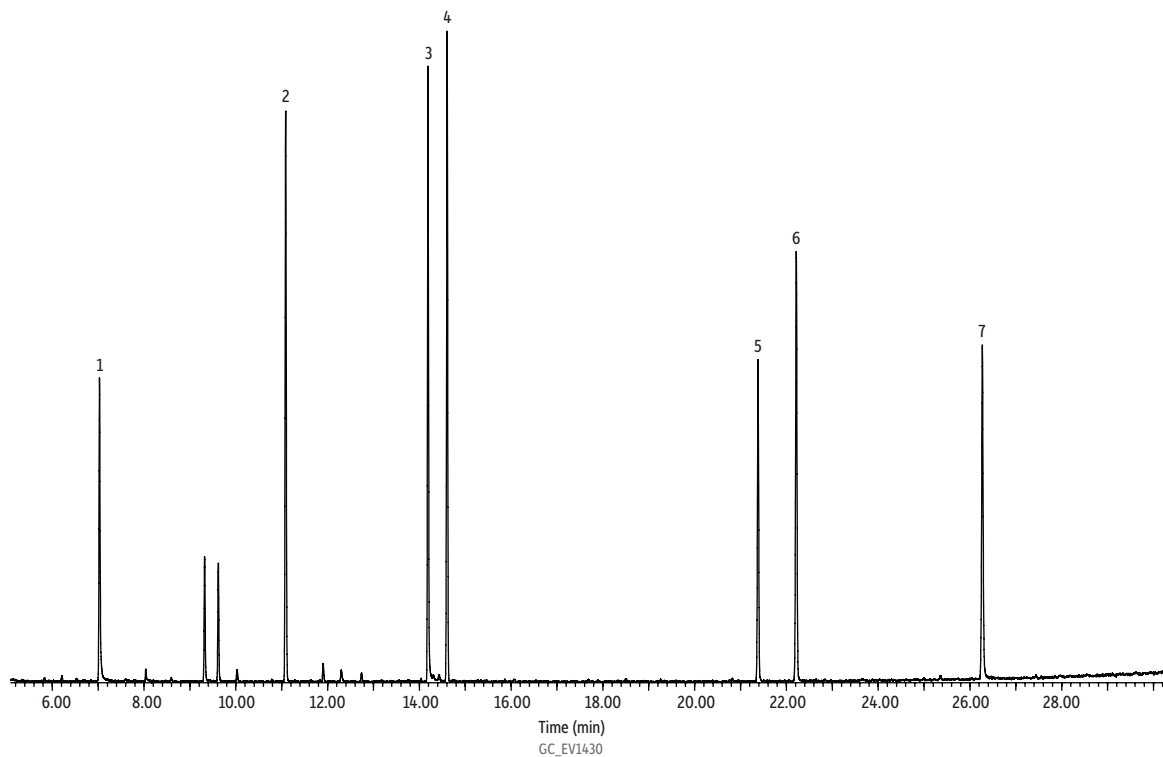


EPA Method 525.3 Internal and Surrogate Standards on Rxi®-5Sil MS



Peaks	t _R (min)
1. 1,3-Dimethyl-2-nitrobenzene (SS)	7.03
2. Acenaphthene-D10 (IS)	11.09
3. Pentachlorophenol-C13 (IS)	14.19
4. Phenanthrene-D10 (IS)	14.61
5. Triphenyl phosphate (SS)	21.38
6. Chrysene-D12 (IS)	22.22
7. Benzo[a]pyrene-D12 (SS)	26.27

Column Rxi®-5Sil MS, 30 m, 0.25 mm ID, 0.25 µm (cat.# 13623)
Sample EPA Method 525.3 PAH IS mix (cat.# 32547)
 EPA Method 525.3 PCP IS (cat.# 32548)
 EPA Method 525.3 surrogate standard (cat.# 32549)

Diluent: Ethyl acetate
Conc.: 2 µg/mL

Injection
Inj. Vol.: 1 µL pulsed splitless (hold 1 min)
Liner: Premium 4 mm single taper w/wool (cat.# 23303.1)
Inj. Temp.: 275 °C
Pulse Pressure: 30 psi (206.8kPa)
Pulse Time: 1 min
Purge Flow: 80 mL/min

Oven
Oven Temp.: 70 °C (hold 1 min) to 200 °C at 10 °C/min to 320 °C at 7 °C/min (hold 3 min)

Carrier Gas He, constant flow
Flow Rate: 1.2 mL/min

Detector MS
Mode: Scan

Scan Program:	Start Time (min)	Scan Range (amu)	Scan Rate (scans/sec)
Goup 1	5	45-550	5.5

Transfer Line Temp.: 280 °C
Analyzer Type: Quadrupole
Source Type: Extractor
Extractor Lens: 6 mm ID
Source Temp.: 350 °C
Quad Temp.: 200 °C
Solvent Delay Time: 5 min
Tune Type: DF1PP
Ionization Mode: EI
Instrument Agilent 7890B GC & 5977A MSD