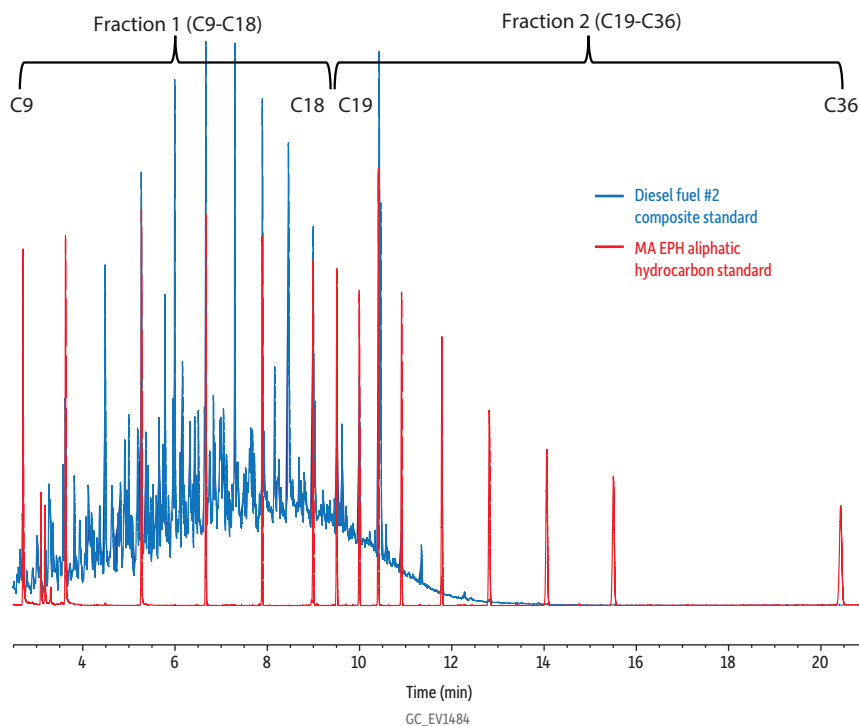


Diesel Fuel 2 Standard on Rxi-5Sil MS



Column	Rxi-5Sil MS, 30 m, 0.32 mm ID, 0.25 μ m (cat.# 13624)
Sample	Diesel fuel #2 composite (cat.# 31258)
Diluent:	Methylene chloride
Conc.:	150 μ g/mL
Injection	
Inj. Vol.:	1 μ L splitless
Liner:	Topaz 4 mm ID single taper w/ wool (cat.# 23303)
Inj. Temp.:	300 $^{\circ}$ C
Oven	
Oven Temp.:	55 $^{\circ}$ C (hold 1.5 min) to 250 $^{\circ}$ C at 20 $^{\circ}$ C/min to 330 $^{\circ}$ C at 6 $^{\circ}$ C/min (hold 2.0 min)
Carrier Gas	He, constant flow
Flow Rate:	5 mL/min
Detector	FID @ 340 $^{\circ}$ C
Make-up Gas	
Flow Rate:	45 mL/min
Make-up Gas	
Type:	H ₂
Hydrogen flow:	40 mL/min
Air flow:	450 mL/min
Data Rate:	50 Hz
Instrument	Agilent 7890A GC