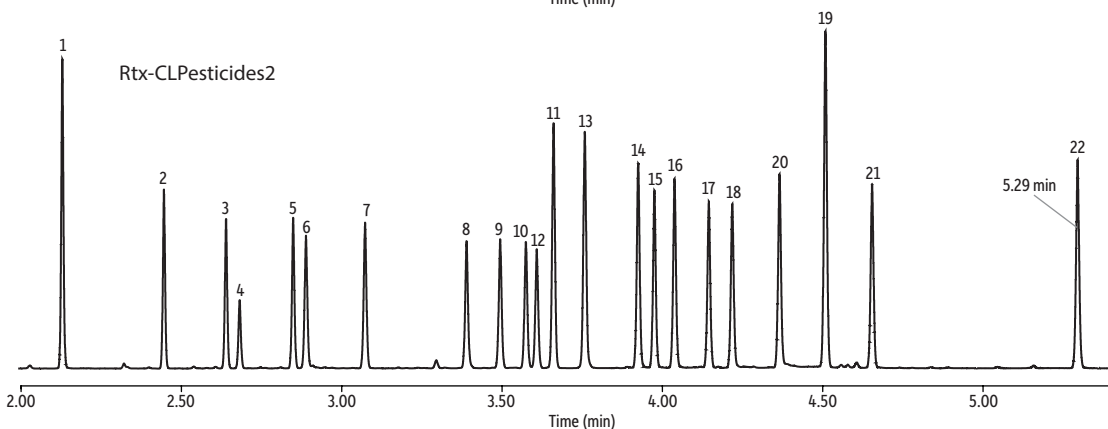
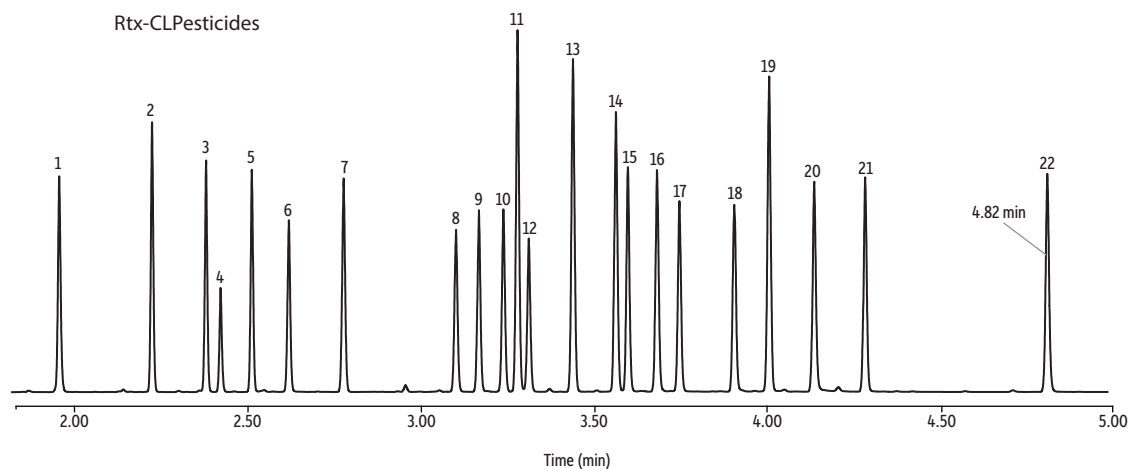


# Fast Dual Column Analysis of Organochlorine Pesticides (EPA Method 8081) Using a GC Accelerator Kit and Rtx-CLPesticides and Rtx-CLPesticides2 Column Set

- GC Accelerator kit decreases cycle time to nearly 10 minutes.
- Increased sample throughput.



GC\_EV1498

Peaks	Conc. (ng/mL)
1. Tetrachloro- <i>m</i> -xylene	25
2. $\alpha$ -BHC	25
3. $\gamma$ -BHC	25
4. $\beta$ -BHC	25
5. $\delta$ -BHC	25
6. Heptachlor	25
7. Aldrin	25
8. Heptachlor epoxide	25
9. <i>trans</i> -Chlordane	25
10. <i>cis</i> -Chlordane	25
11. 4,4'-DDE	50
12. Endosulfan I	50
13. Dieldrin	50
14. Endrin	50
15. 4,4'-DDD	50
16. Endosulfan II	50
17. 4,4'-DDT	50
18. Endrin aldehyde	50
19. Methoxychlor	250
20. Endosulfan sulfate	50
21. Endrin ketone	50
22. Decachlorobiphenyl	50

Columns	
Rtx-CLPesticides	30 m, 0.32 mm ID, 0.32 $\mu$ m (cat.# 11141-051)
and Rtx-CLPesticides2	30 m, 0.32 mm ID, 0.25 $\mu$ m (cat.# 11324-051)
	using Rxi guard column 5 m, 0.32 mm ID (cat.# 10039)
	with universal angled "Y" Press-Tight connector (cat.# 20403-261)
Sample	Organochlorine pesticide mix AB #2 (cat.# 32292)
	Pesticide surrogate mix (cat.# 32453)
Diluent:	<i>n</i> -Hexane
Injection	
Inj. Vol.:	2 $\mu$ L splitless (hold 0.3 min)
Liner:	Topaz 4.0 mm ID single taper inlet liner w/wool (cat.# 23303)
Inj. Temp.:	250 °C
Purge Flow:	40 mL/min
Oven	
Oven Temp.:	120 °C (hold 0.3 min) to 200 °C at 60 °C/min to 230 °C at 25 °C/min to 320 °C at 35 °C/min (hold 1.5 min)
Carrier Gas	H <sub>2</sub> , constant flow
Linear Velocity:	90 cm/sec
Detector	
Make-up Gas	Micro-ECD @ 330 °C
Flow Rate:	60 mL/min
Make-up Gas Type:	N <sub>2</sub>
Data Rate:	50 Hz
Instrument	Agilent 7890A GC
Notes	A GC Accelerator oven insert kit (cat.# 23849) was installed in the instrument to speed up analysis. The analytical columns were custom products that were not on cages.