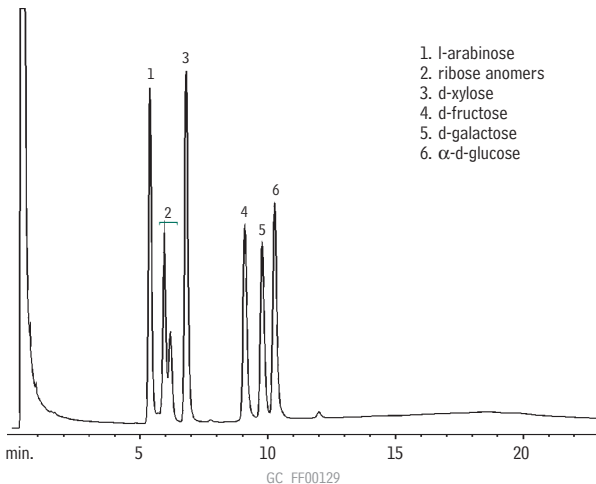


## Sugars (TMS Derivatives) 3% Rt-101 on 100/120 Silcoport™



3% Rt-101 on 100/120 Silcoport™ (cat.# 80400)  
2m, 1/8" OD x 2mm ID

Oven temp.: 140°C to 230°C @ 5°C/min. (hold 5 min.)  
Inj./det. temp.: 250°C / 300°C  
Det.: FID  
Carrier gas: helium  
Column flow rate: 35mL/min.  
FID sensitivity:  $1.28 \times 10^{10}$  AFS