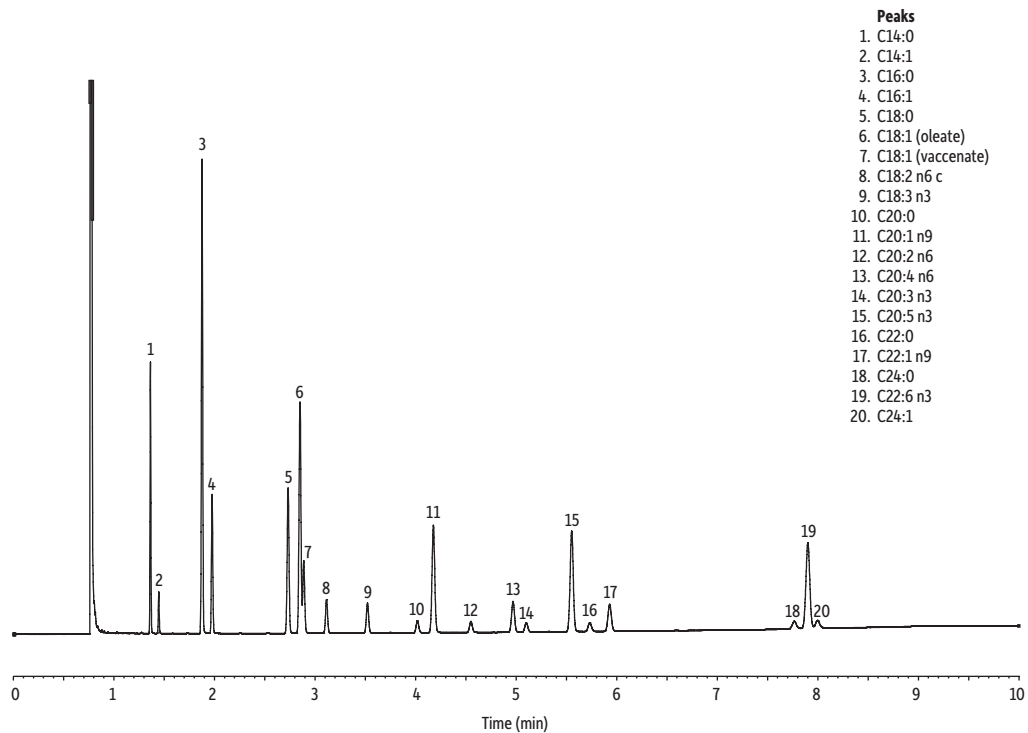


Marine Oil FAMES on FAMEWAX



- Peaks**
1. C14:0
 2. C14:1
 3. C16:0
 4. C16:1
 5. C18:0
 6. C18:1 (oleate)
 7. C18:1 (vaccenate)
 8. C18:2 n6 c
 9. C18:3 n3
 10. C20:0
 11. C20:1 n9
 12. C20:2 n6
 13. C20:4 n6
 14. C20:3 n3
 15. C20:5 n3
 16. C22:0
 17. C22:1 n9
 18. C24:0
 19. C22:6 n3
 20. C24:1

GC_FF00566

Column FAMEWAX, 30 m, 0.32 mm ID, 0.25 μ m (cat.# 12498)
Sample Marine oil FAME mix (cat.# 35066)
Conc.: 10 mg/mL total
Injection
Inj. Vol.: 0.5 μ L split (split ratio 150:1)
Inj. Temp.: 250 $^{\circ}$ C
Oven
Oven Temp.: 195 $^{\circ}$ C to 240 $^{\circ}$ C at 5 $^{\circ}$ C/min (hold 1 min)
Carrier Gas H₂, constant flow
Linear Velocity: 62 cm/sec
Detector FID @ 250 $^{\circ}$ C