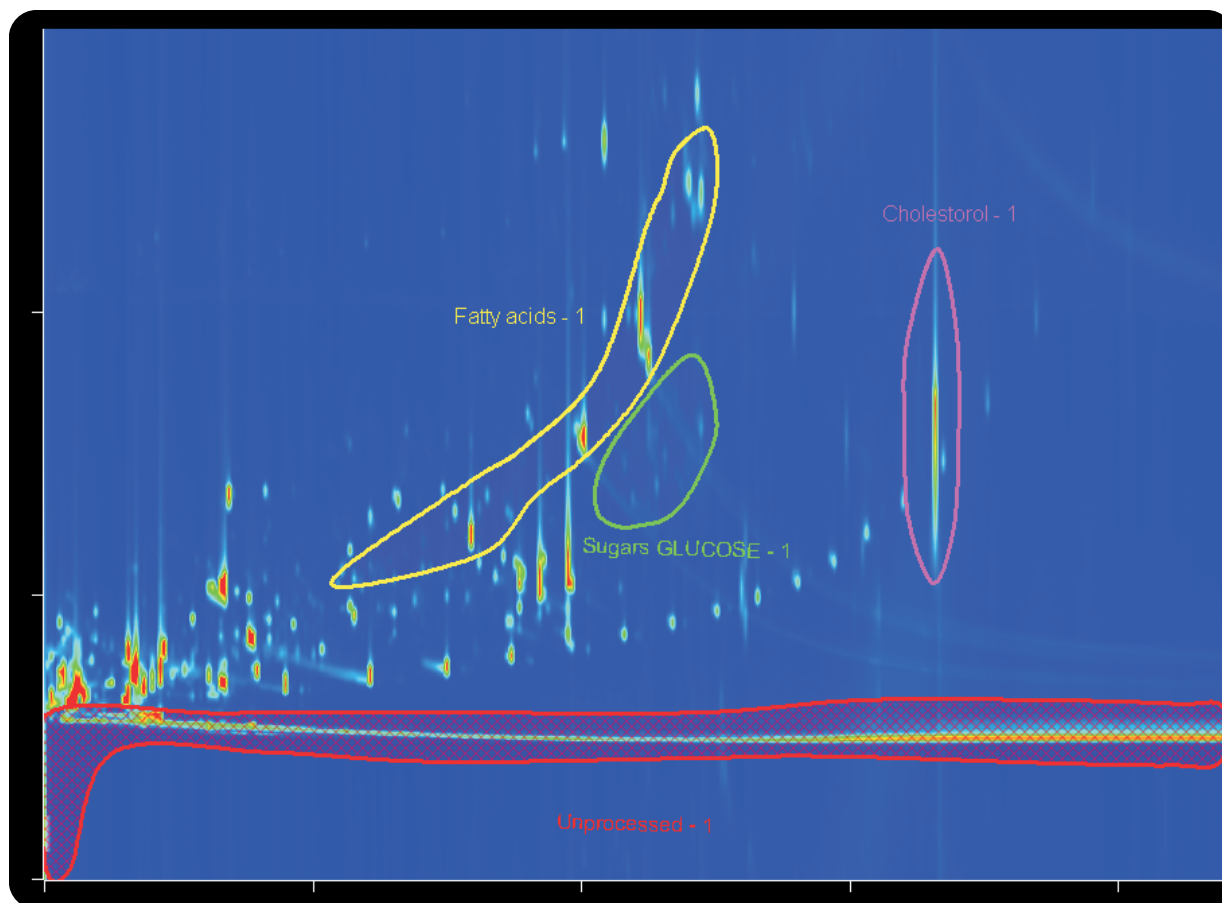


# GCxGC-TOFMS Analysis of TMS Derivatives in Blood Plasma with Classifications

Life Science and Chemical Analysis Centre  
LECO Corporation, Saint Joseph, Michigan USA

Application Snapshot



**GCxGC-TOFMS analysis of blood plasma with classifications for sugars, fatty acids, and cholesterol.**

**Columns:**

30 m x 0.25 mm x 0.25  $\mu$ m Rtx-1ms  
1.3 m x 0.10 mm x 0.10  $\mu$ m BPX-50

**TOFMS:**

45 to 700 m/z @ 200 spectra/s

For questions on this analysis  
e-mail us at: [life\\_science@leco.com](mailto:life_science@leco.com)

For a complete listing of snapshots  
and application notes visit us on the  
web at [www.leco.com](http://www.leco.com)



LECO