

For LabSolutions™ LCMS

LC/MS/MS

Rapid Toxicology Screening System Ver.3



LCMS-8060NX

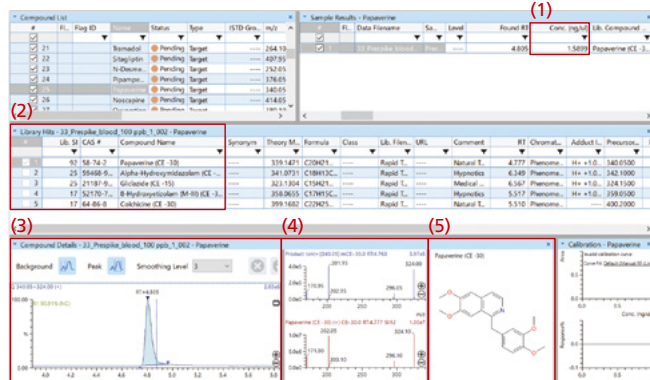
Library info for 231 compounds common in toxicology

This system improves the efficiency of simultaneous LC/MS/MS analysis methods by allowing the user to start analysis without time-consuming steps such as consideration of separation conditions and MS parameter optimization. Rapid simultaneous analysis methods with analysis times under 15 mins are included for 231 compounds including drugs of abuse, psychoneurotic drugs and sedatives. The system also provides optimised conditions for synchronised survey scans used in screening measurements (conditions adopted for the product ion spectrum as a threshold value for the intensity in MRM).

Example of data analysis using LabSolutions Insight™ Library Screening:

Using LabSolutions Insight Library Screening, you can check all of the following:

- (1) Quantitative results
- (2) Library search results
- (3) MS chromatogram
- (4) MS/MS spectra
- (5) Structural formula



Total solution including semi-quantitation

For each compound in the method, calibration curve information based on internal standards is available, so it is possible to obtain simple quantitative values after analysis. Using a pretreatment method based on the QuEChERS method*, it is possible to comprehensively recover compounds from biological samples. Qualitative analysis using the spectral library can be carried out during the data processing stage. In other words, the system provides a total solution encompassing pretreatment, analysis and data processing.

Pretreatment using the Micro Volume QuEChERS Kit

- (1) Add the sample
- (2) Separate with a centrifuge
- (3) Transfer the supernatant to a vial



* For details of the pretreatment method, please refer to the website by scanning the QR code.



LC/MS/MS Rapid Toxicology Screening System Ver. 3

List of registered compounds:

231 compounds including illegal drugs, sedatives, psychotropic drugs and medical drugs associated with many real-life cases.

IS Diazepam-D5 (Positive)	Chlorpromazine	Furosemide	N-Desmethyl clobazam	Secobarbital
IS_Phenobarbital-D5 (negative)	Chlorpromazine-M (bis-nor-)	Gabapentin	N-Desmethyl zopiclone	Sertraline
7-Aminoclonazepam	Cibenzoline	Glibenclamide	N-Desmethylmirtazapine	Setiptiline
7-Aminoflunitrazepam	Clobazam	Gliclazide	Nemonapride	Sildenafil
7-Aminonimetazepam	Clocapramine	Glimepiride	Nicardipine	Silodosin
7-Aminonitrazepam	Clomipramine	Haloperidol	Nicotine	Sitagliptin
8-Hydroxyetizolam (M-III)	Clonazepam	Haloxazolam	Nicotine-M	Solifenacin
Acetaminophen	Clotiazepam	Hydroxymethylbrotizolam	Nifedipine	Spiperone
Aconitine	Cloxacolam	Hydroxyzine	Nimetazepam	Spironolactone
Alfa-methyltryptamine	Clozapine	Ibuprofen	Nitrazepam	Sulfamethoxazole
Allylisopropylacetylurea	Cocaine	Imidapril	Norephedrine	Sulpiride
alpha-Hydroxyalprazolam	Codeine	Imipramine	Nortriptyline	Sultopride
alpha-Hydroxymidazolam	Colchicine	Irbesartan	Noscapine	Suvorexant
alpha-Hydroxytriazolam	DDVP	Isopropylantipyrine	Olanzapine	Tadalafil
Alprazolam	Delorazepam	Ketamine	Olmesartan	Tandospirone
Amitriptyline	DEP	Ketoprofen	Oxazepam	Telmisartan
Amlodipine	Desipramine	Lamotrigine	Oxyperitine	Temazepam
Amobarbital	Desmethylclotiazepam	Levetiracetam	Paliperidone	Tetracaine
Amoxapine	Desmethyldiazepam	Levomopromazine	Papaverine	THC
Amphetamine	Dextromethorphan	Lidocaine	Paroxetine	THC-COOH
Ampicillin	Diazepam	Lorazepam	Pemoline	Thiamylal
Aripiprazole	Dibucaine	Lormetazepam	Pentazocine	Timiperone
Atenolol	Diclofenac	Losartan	Pentobarbital	Tofisopam
Atomoxetine	Dihydrocodeine	Loxoprofen	Perospirone	Topiramate
Atorvastatin	Diltiazem	Malathion	Perphenazine	Tramadol
Atropine	Diphenhydramine	Maprotiline	Phenobarbital	Trandolapril
Azelidipine	Diprophyline	MDA	Phenytoin	Trazodone
Azilsartan	Diquat	MDMA	Pimozide	Triazolam
Barbital	Domperidone	Medazepam	Pioglitazone	Trihexyphenidyl
Benzoyl ecgonine	Donepezil	Mefenamic acid	Pipamperone	Trimethoprim
Biperiden	Dosulepin	Memantine	Piroxicam	Trimipramine
Blonanserin	Droperidol	Mepivacaine	Pitavastatin	Urapidil
Brexiprazole	Duloxetine	Mequitazine	Pranlukast	Valproic Acid
Bromazepam	Ecgonine methyl ester	Metformin	Primidone	Valsartan
Bromocriptine	Ephedrine	Methamphetamine	Procaine	Vardenafil
Bromovalerylurea	Escitalopram	Methomyl	Prochlorperazine	Venlafaxine
Bromperidol	Estazolam	Methylephedrine	Promethazine	Verapamil
Brotizolam	Ethenzamide	Methylphenidate	Propicazone	Warfarin
Bupivacaine	Ethyl loflazepate	Mexazolam	Propofol	Zalepron
Caffeine	Etizolam	Mexiletine	Propranolol	Zolpidem
Candesartan	Famotidine	Mianserin	Quazepam	Zolpidem_M-1
Carbamazepine	Fludiazepam	Midazolam	Quetiapine	Zonisamide
Carbazochrome	Flufenamic acid	Milnacipran	Risperidone	Zopiclone
Carpipramine	Flunitrazepam	Mirtazapine	Ropivacaine	Zopiclone-N-oxide
Carvedilol	Fluphenazine	Morphine	Rosuvastatin	Zotepine
Chlordiazepoxide	Flurazepam	Mosapramine	Salicylamide	
Chlorpheniramine	Fluvoxamine	Naftopidil	Salicylic acid	

Remarks and Precautions

1. LabSolutions LCMS Ver. 5.109 or later and LabSolutions Insight Ver. 3.8SP1 or later are required.
2. Depending on the condition and specifics of the equipment used, differences in quantitative values may occur. For accurate quantitative values, please use a calibration curve method with appropriate standard samples. In addition, scores obtained from searching in the library show the similarity of spectra and form one basis for the identification of compounds, but for more accurate compound identification it is more effective to combine multifaceted information such as retention times and sample information.

LabSolutions and LabSolutions Insight are trademarks of Shimadzu Corporation or its affiliated companies in Japan and/or other countries.



Shimadzu Corporation

www.shimadzu.com/an/

For Research Use Only. Not for use in diagnostic procedures.

This publication may contain references to products that are not available in your country. Please contact us to check the availability of these products in your country.

Company names, products/service names and logos used in this publication are trademarks and trade names of Shimadzu Corporation, its subsidiaries or its affiliates, whether or not they are used with trademark symbol "TM" or "®".

Third-party trademarks and trade names may be used in this publication to refer to either the entities or their products/services, whether or not they are used with trademark symbol "TM" or "®".

Shimadzu disclaims any proprietary interest in trademarks and trade names other than its own.

The contents of this publication are provided to you "as is" without warranty of any kind, and are subject to change without notice. Shimadzu does not assume any responsibility or liability for any damage, whether direct or indirect, relating to the use of this publication.