



PepMap Neo Columns Enabling brilliant with excellent sample coverage

Are you profiling peptides using low-flow chromatography?

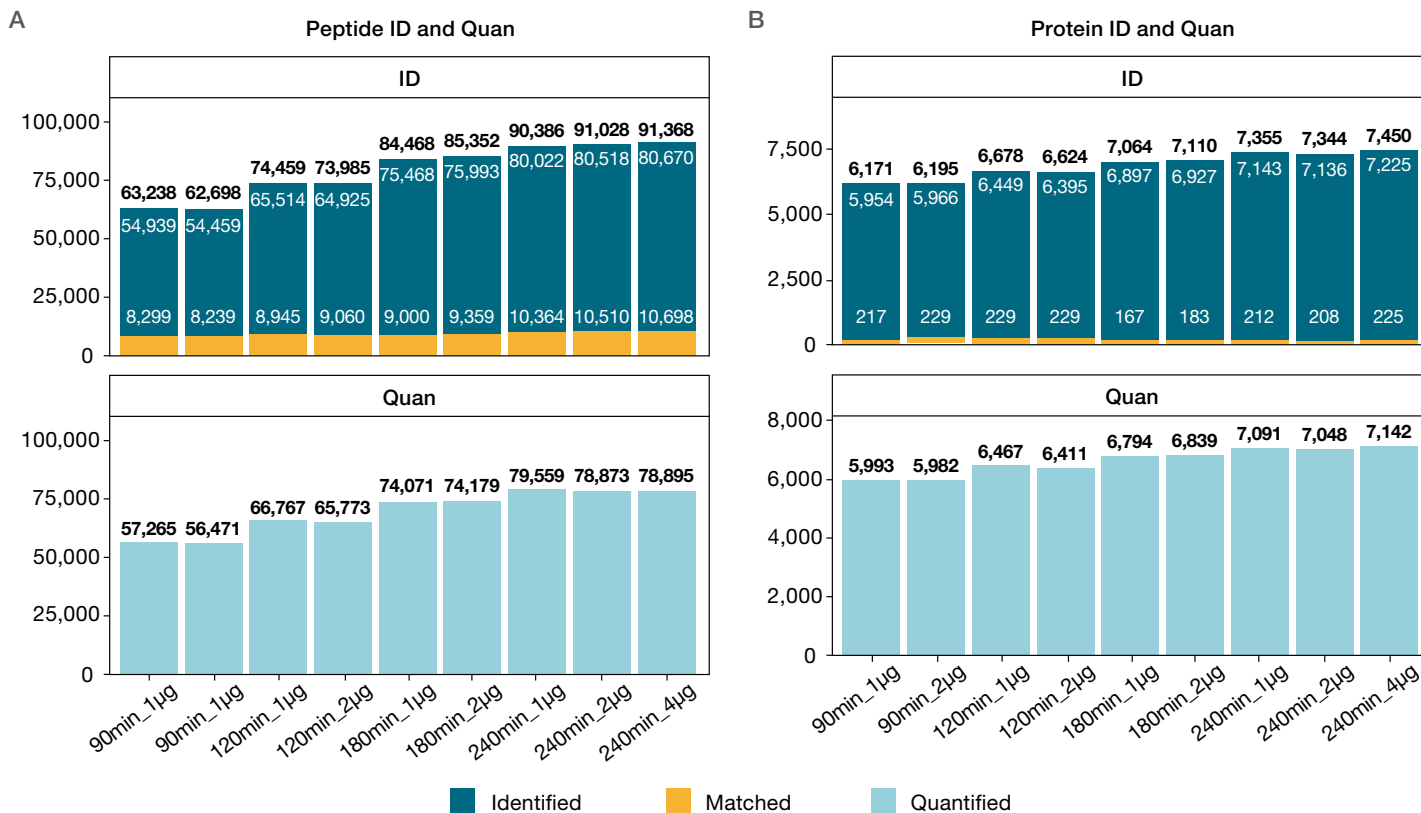
When striving to gain maximum sample insights, the column and liquid chromatography (LC) system you choose can make all the difference. The Thermo Scientific™ Vanquish™ Neo and PepMap™ Neo columns are stable up to 1500 bar, providing higher column efficiency for enhanced resolution and sample coverage.

Single shot nano liquid chromatography-mass spectrometry (LC-MS) analyses require the highest possible separation efficiency to maximize the number of identified peptides and

proteins. Method optimization such as changing the column length, mobile phase gradient, and sample loading on column can lead to trade-offs such as shorter column lifetime and peak broadening.

The data on the next page shows that the Vanquish Neo and PepMap Neo columns consistently produce high peptide and protein identifications regardless of the quantity of sample loaded. Complete details of the analysis can be found in [Thermo Scientific Technical Note 74152](#).

Excellent column performance



The number of peptides (A) and proteins (B) that were confidently identified, spectral matched, and quantified using gradient length from 90 to 240 min and loading amount from 1 to 4 µg.

Learn more at thermofisher.com/lowflowHPLCcolumns
and thermofisher.com/VanquishNeo