

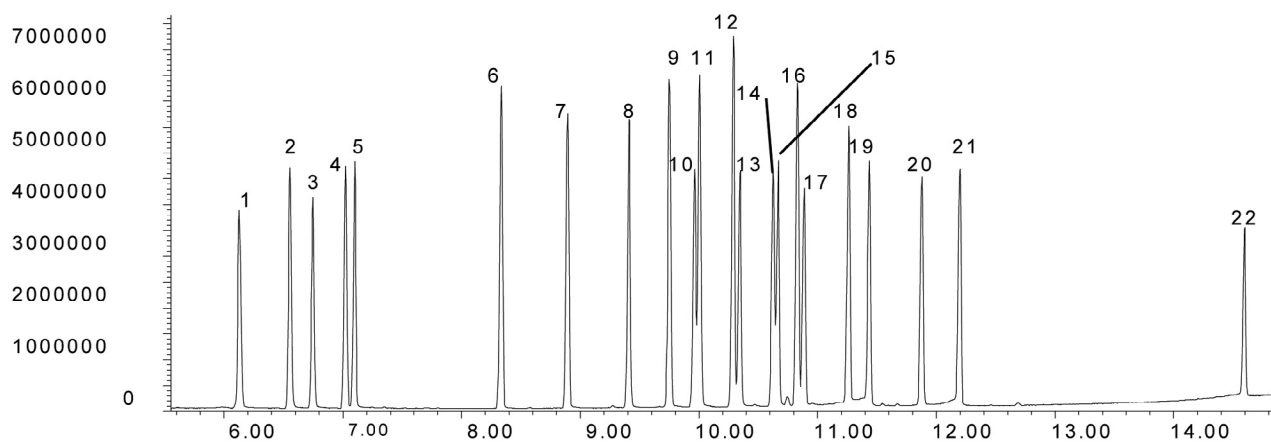
Analysis of organochlorine pesticides (USEPA 8081)

SolGel-1ms™

Column part number	054795		
Phase	SolGel-1ms™	Constant flow	On
Column	30 m x 0.25 mm x 0.25 µm	Average linear velocity	35 cm/sec at 110°C
Sample	100 ppm in dichloromethane	Injection mode	Splitless
Initial temperature	110°C, 1 min	Purge on time	0.5 min
Rate 1	25°C/min to 150°C	Purge on flow	60
Rate 2	12°C/min to 260°C	Injection volume	1 µL
Rate 3	15°C/min to 300°C	Injection temperature	250°C
Final temperature	300°C, 5 min	Autosampler	No
Detector	MS	Liner type	4 mm ID Single Taper
Carrier gas	He, 31.6 psi	Full scan / SIM	Full scan 40-500
Carrier gas flow	1.7 mL/min		

Components

- | | | | |
|-----------------------------------|--------------------|------------------------|------------------------|
| 1. 2,4,5,6-Tetrachlorometa-xylene | 7. Aldrin | 13. Dieldrin | 19. pp-DDT |
| 2. α-BHC | 8. Heptachlorepoxy | 14. Endrin | 20. Endrin ketone |
| 3. β-BHC | 9. trans-Chlordane | 15. Endosulfan B | 21. Methoxychlor |
| 4. γ-BHC | 10. Endosulfan A | 16. pp-DDD | 22. Decachlorobiphenyl |
| 5. δ-BHC | 11. cis-Chlordane | 17. Endrin aldehyde | |
| 6. Heptachlor | 12. pp-DDE | 18. Endosulfan sulfate | |


 For more information visit www.trajanscimed.com or contact techsupport@trajanscimed.com