

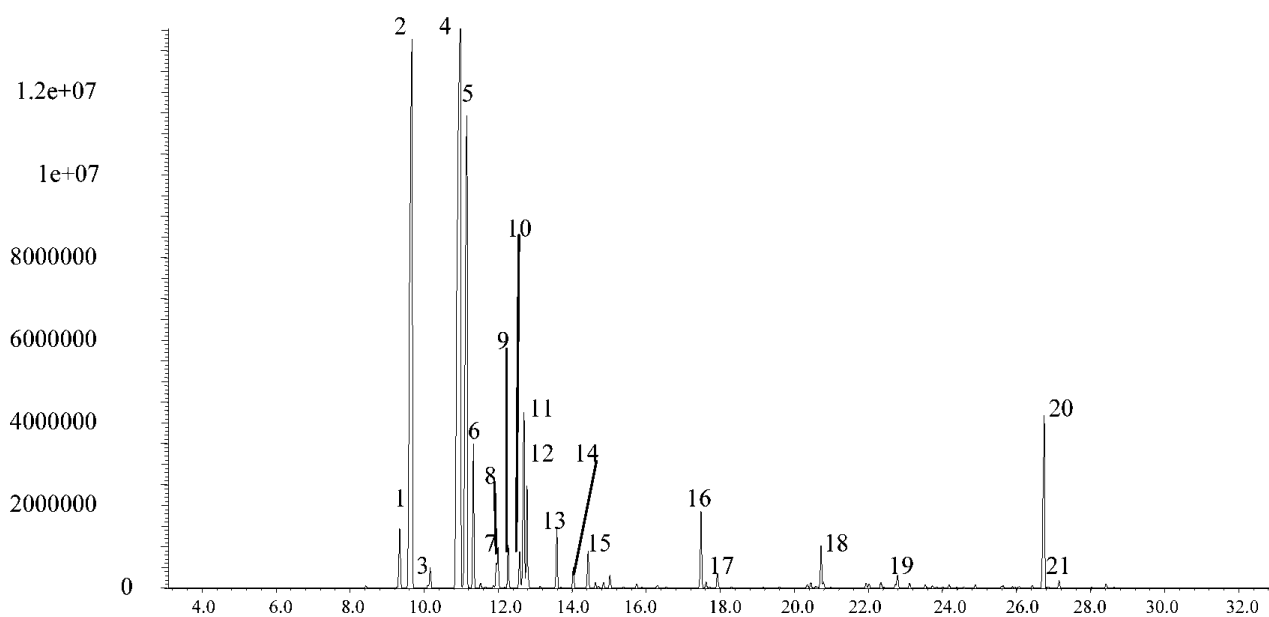
Analysis of nutmeg oil

BPX5

Column part number	054101		
Phase	BPX5	Carrier gas flow	1.0 mL/min
Column	30 m x 0.25 mm x 0.25 μ m	Constant flow	On
Initial temperature	40°C, 1 min	Average linear velocity	36 cm/sec at 40°C
Rate	5°C/min	Injection mode	Split (200:1), 250°C
Final temperature	260°C	Purge on (split) vent flow	200 mL/min
Detector	MS	Injection volume	0.2 μ L
Carrier gas	He, 7.0 psi	Liner type	4 mm ID double taper

Components

- | | | | |
|----------------------|---------------------------|----------------------------|-----------------------|
| 1. α -Thujene | 7. α -Phellandrene | 13. α -Terpinene | 19. α -Copaene |
| 2. α -Pinene | 8. δ -3-Carene | 14. trans-Sabinene hydrate | 20. Myristcin |
| 3. Camphene | 9. α -Terpinene | 15. α -Terpinolene | 21. Elemicin |
| 4. Sabinene | 10. p-Cymene | 16. Terpinen-4-ol | |
| 5. β -Pinene | 11. Limonene | 17. 1- α -Terpineol | |
| 6. Myrcene | 12. β -Phellandrene | 18. Safrole | |



For more information visit www.trajanscimed.com or contact techsupport@trajanscimed.com