

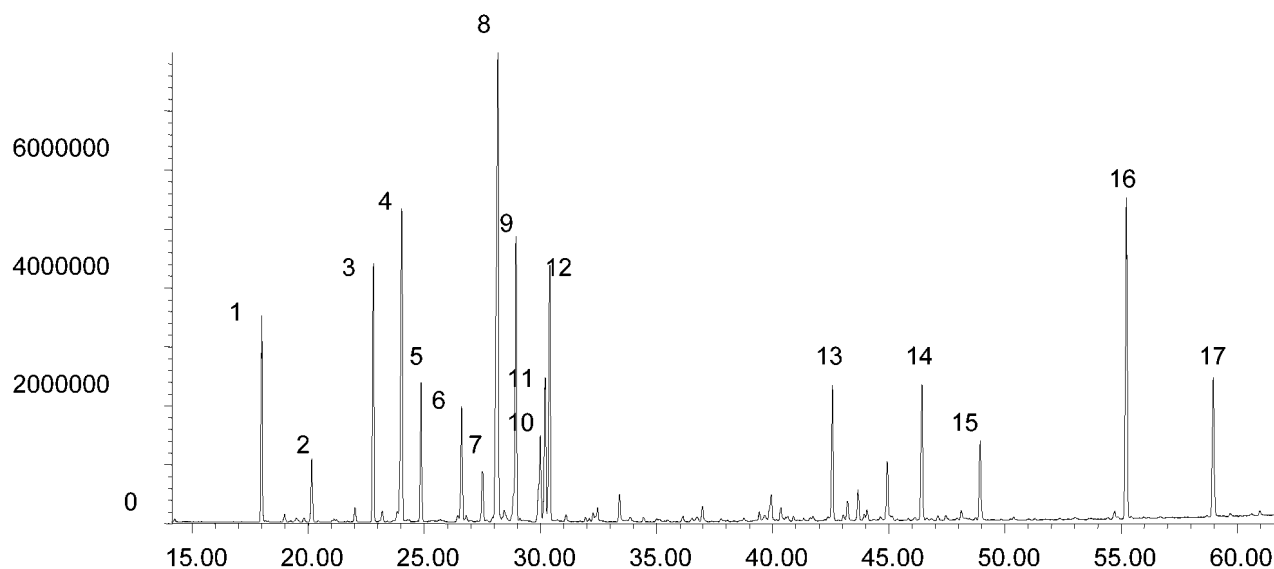
## Analysis of ylang ylang oil

SolGel-WAX™

Column part number	054796		
Phase	SolGel-WAX™	Carrier gas flow	1.8 mL/min
Column	30 m x 0.25 mm x 0.25 µm	Constant flow	On
Sample	Neat	Average linear velocity	35 cm/sec at 40°C
Initial temperature	40°C, 2 min	Injection mode	Split (120:1), 250°C
Rate	3°C/min	Injection volume	0.1 µL
Final temperature	250°C, 10 min	Liner type	4 mm ID double taper
Detector	MS	Full scan / SIM	Full scan 45-450
Carrier gas	He, 25.7 psi		

**Components**

- |                     |                   |                           |                       |
|---------------------|-------------------|---------------------------|-----------------------|
| 1. p-Methyl anisole | 6. α-Humulene     | 11. α-Farnesene           | 16. Benzyl benzoate   |
| 2. α-Copaene        | 7. α-Amorphene    | 12. Geranyl acetate       | 17. Benzyl salicylate |
| 3. Linalool L       | 8. Germacrene     | 13. trans-Cinamyl acetate |                       |
| 4. β-Caryophyllene  | 9. Benzyl acetate | 14. Farnesyl acetate      |                       |
| 5. Methyl benzoate  | 10. δ-Cadinene    | 15. Farnesol              |                       |


 For more information visit [www.trajanscimed.com](http://www.trajanscimed.com) or contact [techsupport@trajanscimed.com](mailto:techsupport@trajanscimed.com)