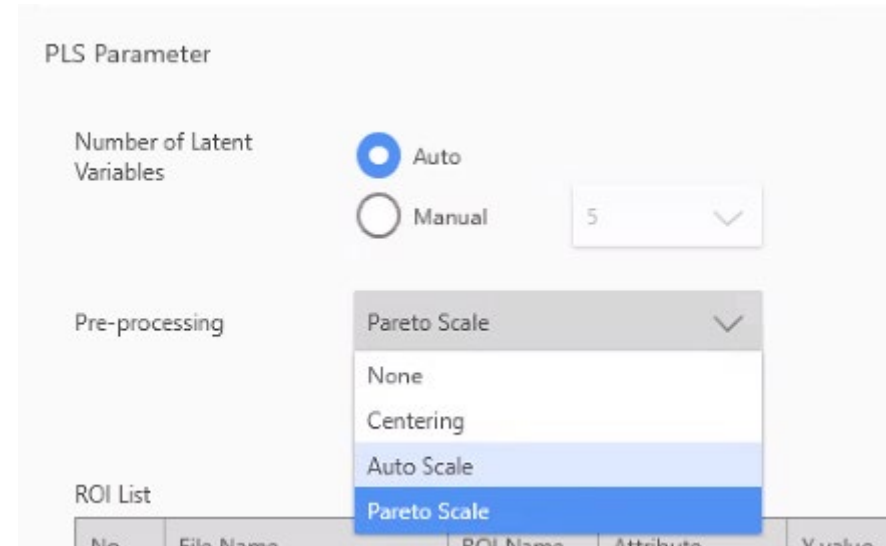
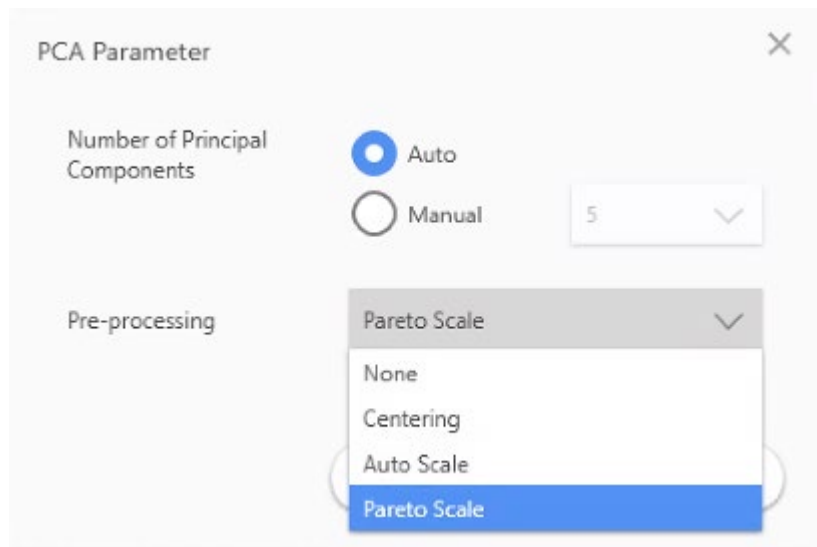


Scale

There are several places to select the Scale in IMAGEREVEAL.



About “Scale”

- Scale selection: How to handle the signal strength X_i

- None: Leave it as it is

- Centering : Set the average to 0 $X_i - \hat{X}$

- Pareto scale : Reduce the effect of the range of variation

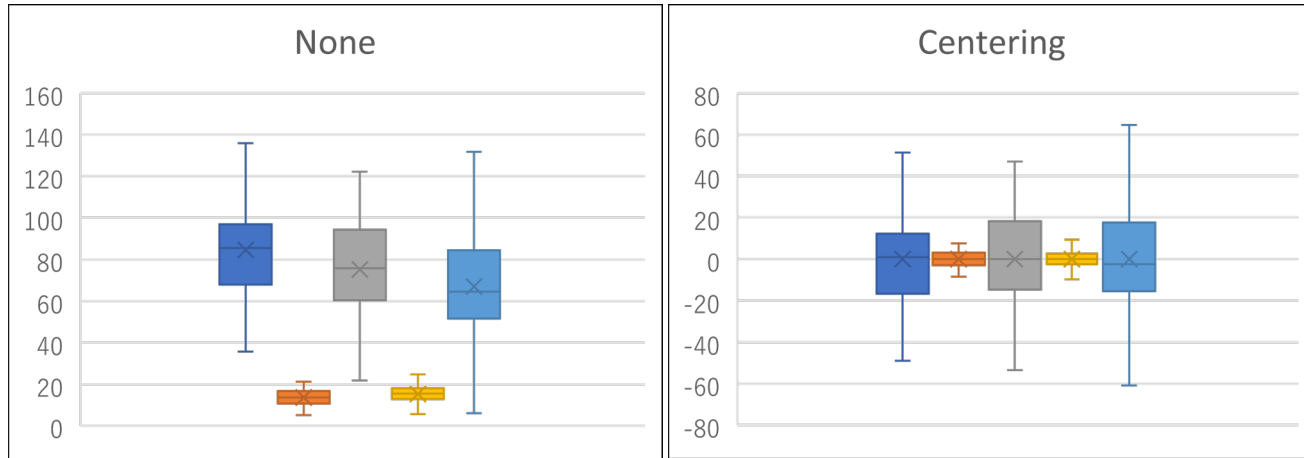
$$\frac{X_i - \hat{X}}{\sqrt{\sigma}}$$

- Auto scale : Eliminate the effect of the range of variation

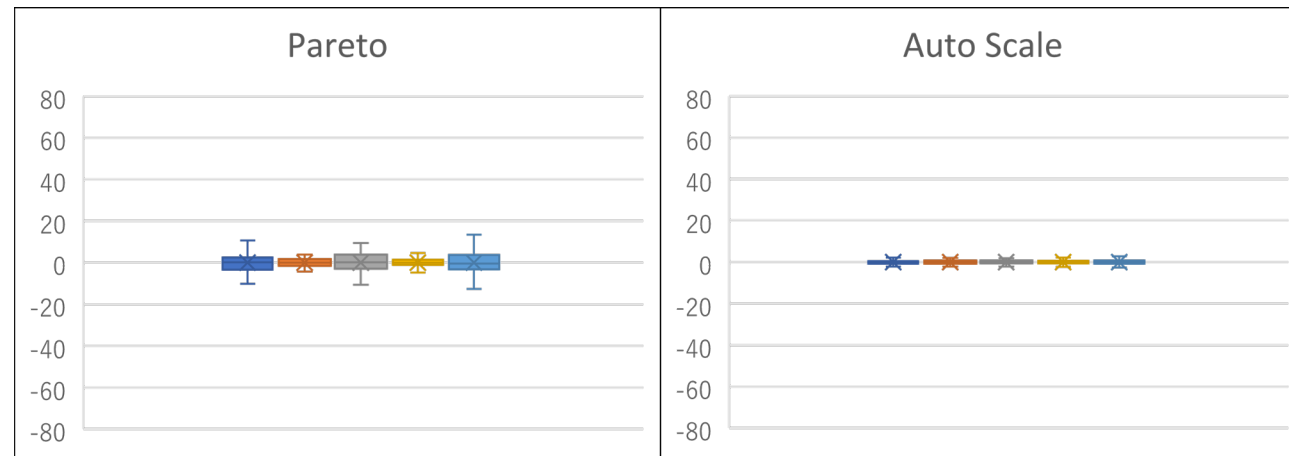
$$\frac{X_i - \hat{X}}{\sigma}$$

In the case of PCA, Score Plot does not change much, but the scatter of data points in Loading Plot changes.

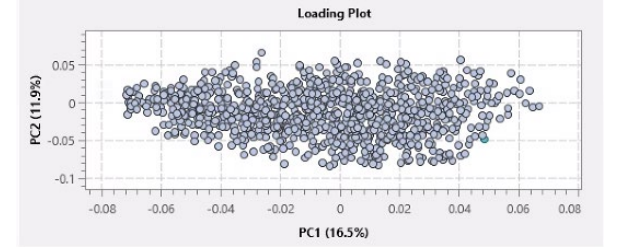
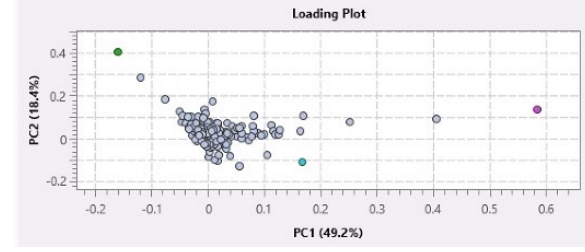
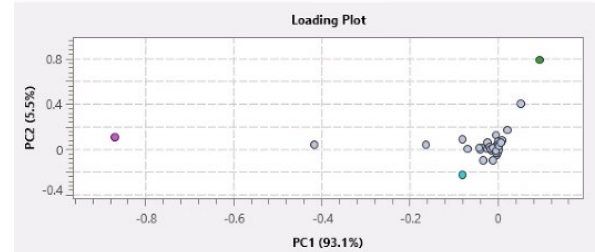
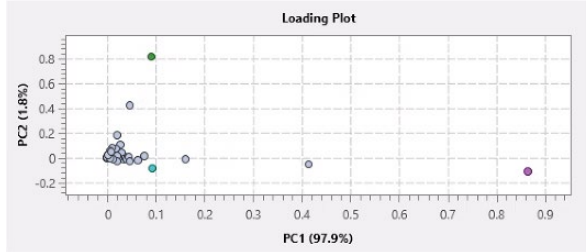
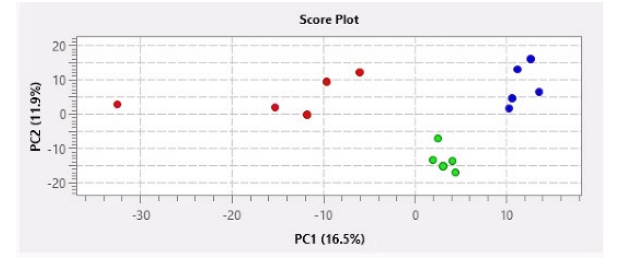
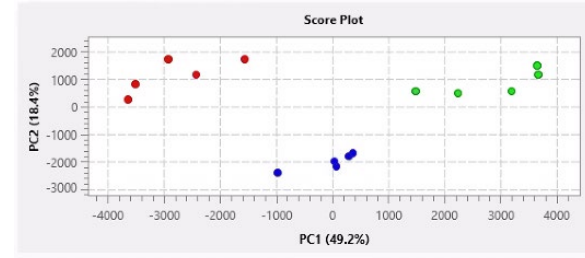
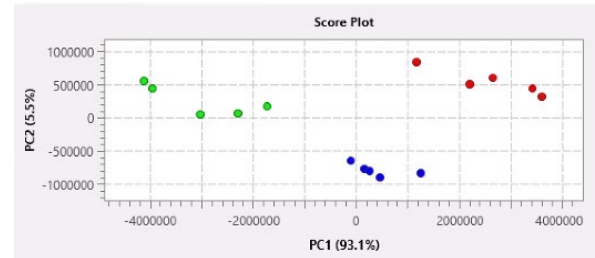
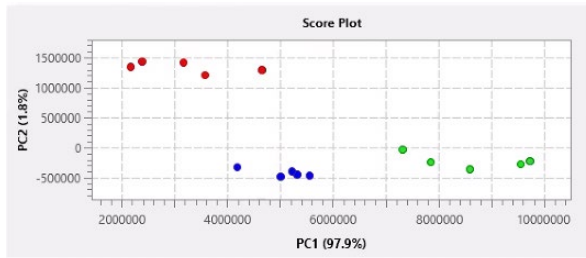
Image of scale



Variation is approximately proportional to signal strength



Example of a PCA with a different scale



None

Centering

Pareto scale

Auto Scale