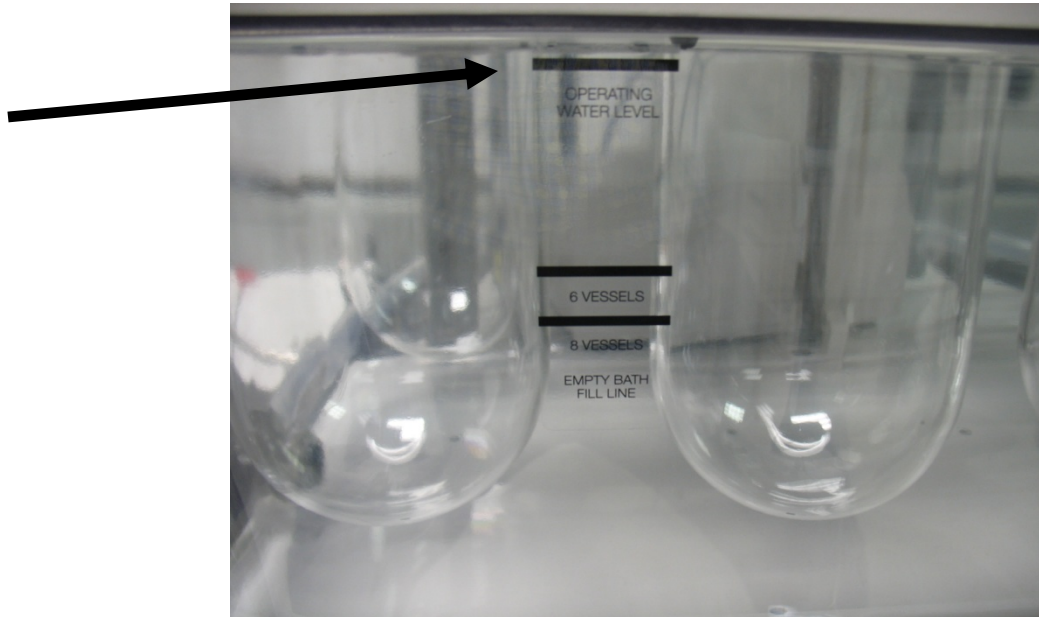


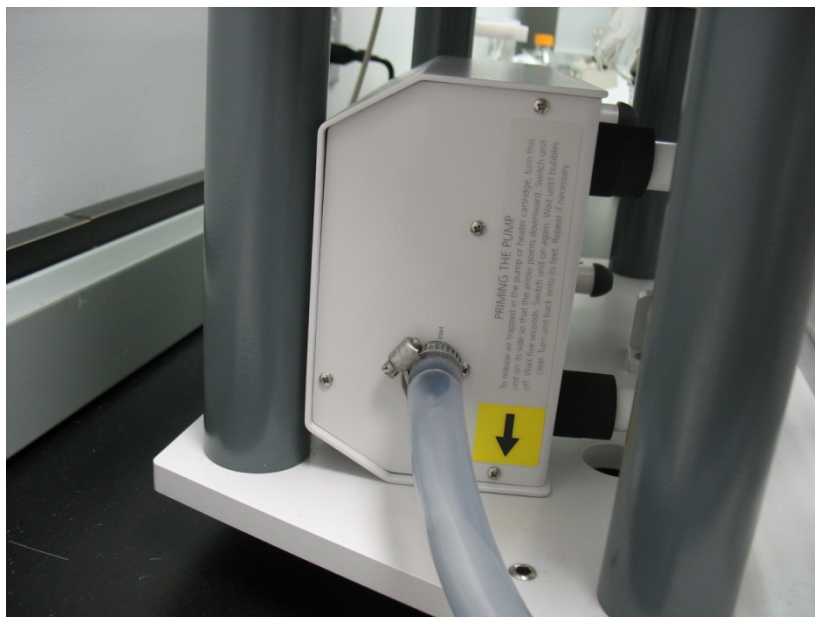
708DS Pump Priming Procedure

The 708-DS Wide Input Range Heater is provided with an efficient pump for circulating the water through the heater and bath. This pump has a long life ceramic bearing that must be wet in order to operate properly. If run dry for more than a minute, this bearing will overheat and may fail. In order to maximize the life of the pump, please follow these priming procedures.

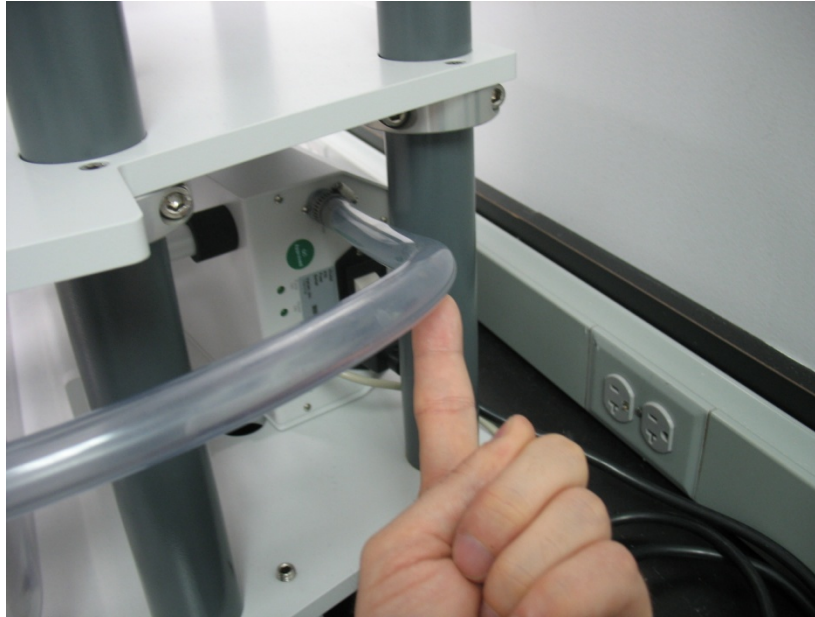
- 1) Ensure the water bath is filled to its OPERATING WATER LEVEL.



- 2) Rotate the pump such that the Priming Instructions label has its arrow pointing down.



- 3) Lift the OUTLET hose allowing any trapped air bubbles to exit the pump. As the air bubbles exit the pump, the OUTLET hose should fill with water.



- 4) Verify that there are no remaining air bubbles at the INLET hose on the pump.
- 5) Turn ON the heater/pump unit.
- 6) Any remaining trapped air should exit the pump. If a gurgling sound is heard after 30 seconds, turn OFF the heater/pump unit, wait 1 minute, then turn power back ON.
- 7) If the pump is operating normally, return the pump to its standard operating position. If the pump is not moving water, or a loud gurgling sound is still heard, then the pump has not primed. Turn OFF the pump power immediately. Correct any issues noted below, then repeat steps 1 through 7 to prime the pump.
 - a. There may not be enough water in the bath. The water level must be at the OPERATING WATER LEVEL.
 - b. The inlet tube may be pinched, not allowing enough water into the unit.
 - c. The outlet tube may be pinched, not allowing the entrapped air to leave the unit.
 - d. There may be an obstruction in the bath that does not allow full water flow.

NOTE WHILE PRIMING: Do not allow the pump to operate for more than 30 seconds at a time without full water flow. If priming does not happen within 30 seconds, turn OFF the pump and wait at least 1 minute before turning pump back ON. Running the pump for longer periods without proper prime WILL damage the pump bearing.