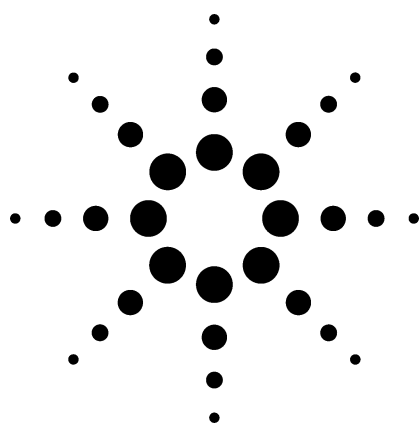


Application 707

Gas Phase Sample Extraction System

Analysis of Trace Organic Components in Water



Technical Overview



Application Highlights

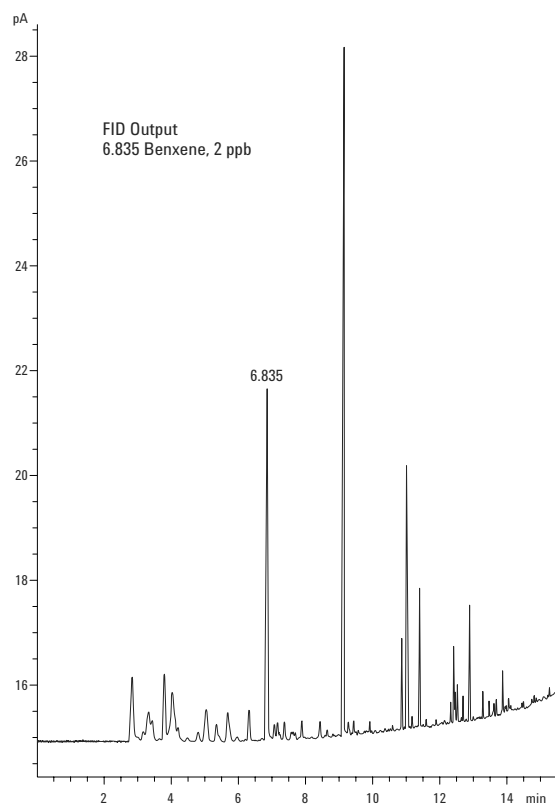
- Bench-top or wall-mounted system
- The extraction is performed by flowing the water sample past a thin, solid, polymer barrier.
- Various detector choices allow a wide range of selectivity and sensitivity.
- Concentration ranges down to ppt levels

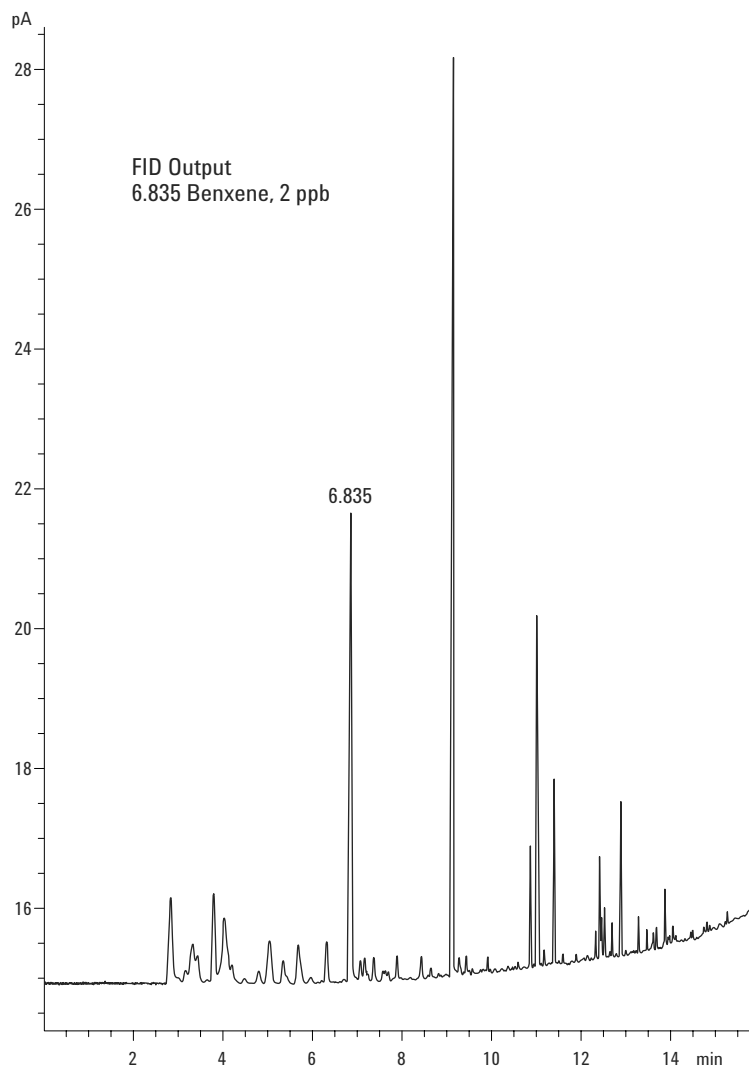
Optional Configurations

- Trace hydrocarbon impurities in cooling tower/exchanger water
- Trace hydrocarbon impurities in high purity drinking water
- TOGA Analysis utilizing capillary column technology
- Contaminants in discharge water

For More Information

For more information on our products and services, visit our Web site at www.agilent.com/chem.





FID output from the Agilent Gas Phase Sample Extraction System.

Agilent shall not be liable for errors contained herein or for incidental or consequential damages in connection with the furnishing, performance, or use of this material.

Information, descriptions, and specifications in this publication are subject to change without notice.

© Agilent Technologies, Inc. 2002

Printed in the USA
December 6, 2002
5988-7673EN