

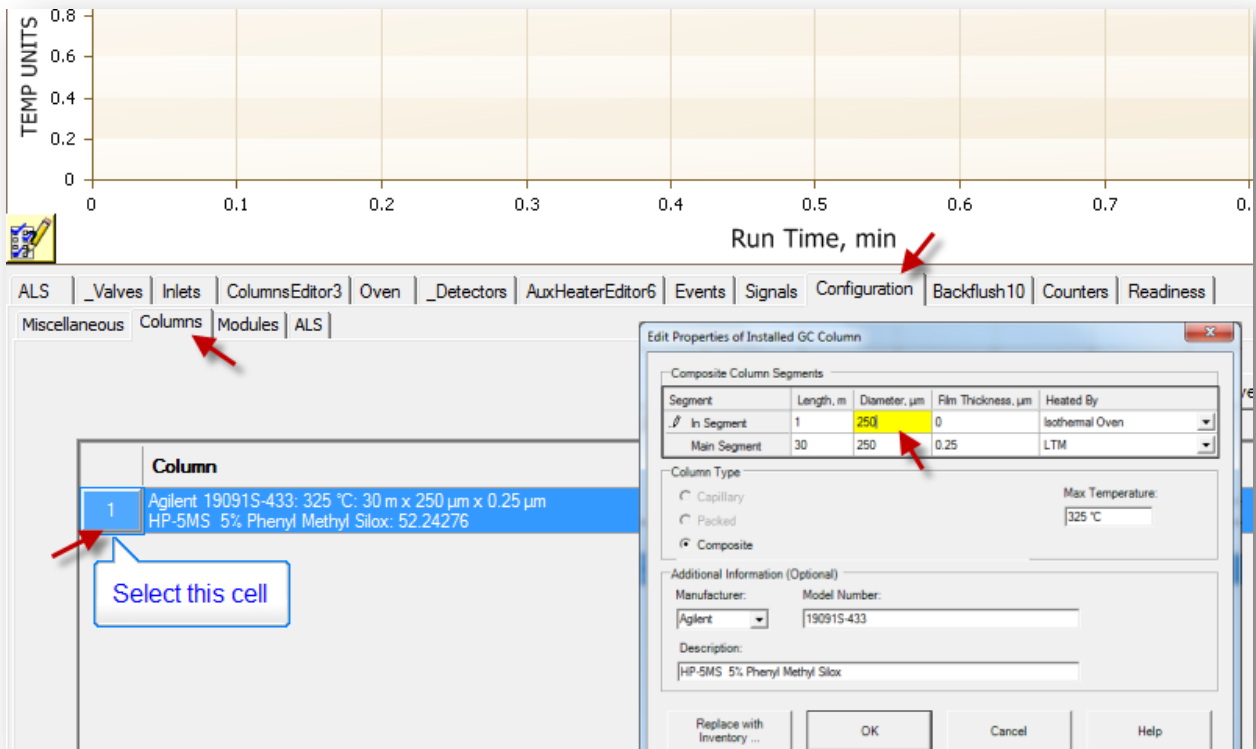
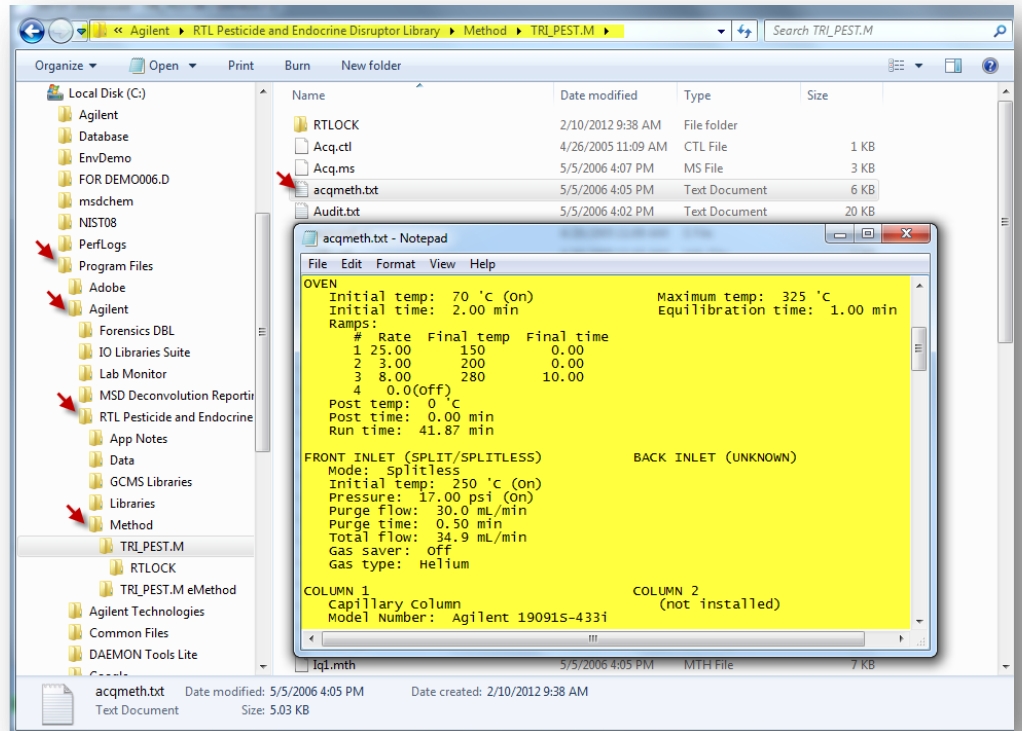
How to Resolve 7890A RTL Lib Method on 5975T?

1. Install RTL library.
2. Obtain the original method description:

from *acqmeth.txt* file inside the *METHOD.M* folder or

from application note.

3. Make a copy of the original RTL Method.
4. Load the method. Accept all errors during the method loading.
5. In **GC Parameters** window Navigate to **\Configuratuion\Columns** tab.
6. Modify column parameters according to your **5975T** configuration. Press OK.



NOTE: For some RTL Methods you'll need to repeat the step of column Configuration **TWO** times.

7. Press Resolve button and Save method with exactly the same name as the original method
8. Manually modify the GC Parameters of the method using the method description obtained in *step 2*
NOTE: *Isothermal Oven Temp* is a unique parameter of the 5975T method. General recommendation is to set it's temperature **equal to the inlet temperature**.

| | Rate °C/min | Value °C | Hold Time min | Run Time min |
|-------------|-------------|----------|---------------|--------------|
| ► (Initial) | | 50 | 1 | 1 |
| Ramp 1 | 25 | 125 | 0 | 4 |
| Ramp 2 | 10 | 300 | 10 | 31.5 |
| * | | | | |

9. Save the method.